

SAMM50 Antibody (Center)
Purified Rabbit Polyclonal Antibody (Pab)
Catalog # AP20683c

Specification

SAMM50 Antibody (Center) - Product Information

Application	WB,E
Primary Accession	Q9Y512
Other Accession	Q6AXV4 , Q8BGH2
Reactivity	Human
Predicted	Mouse, Rat
Host	Rabbit
Clonality	Polyclonal
Isotype	Rabbit Ig
Calculated MW	51976

SAMM50 Antibody (Center) - Additional Information

Gene ID 25813

Other Names

Sorting and assembly machinery component 50 homolog,
Transformation-related gene 3 protein,
TRG-3, SAMM50, SAM50

Target/Specificity

This SAMM50 antibody is generated from a rabbit immunized with a KLH conjugated synthetic peptide between 346-380 amino acids from the Central region of human SAMM50.

Dilution

WB~~1:1000

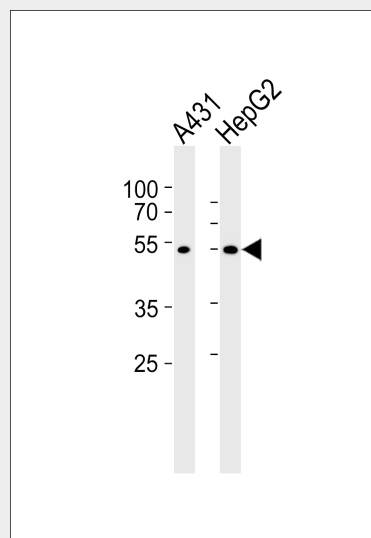
Format

Purified polyclonal antibody supplied in PBS with 0.09% (W/V) sodium azide. This antibody is purified through a protein A column, followed by peptide affinity purification.

Storage

Maintain refrigerated at 2-8°C for up to 2 weeks. For long term storage store at -20°C in small aliquots to prevent freeze-thaw cycles.

Precautions



Western blot analysis of lysates from A431, HepG2 cell line (from left to right), using SAMM50 Antibody (Center)(Cat. #AP20683c). AP20683c was diluted at 1:1000 at each lane. A goat anti-rabbit IgG H&L(HRP) at 1:5000 dilution was used as the secondary antibody. Lysates at 35ug per lane.

SAMM50 Antibody (Center) - Background

May be required for the assembly pathway of mitochondrial outer membrane proteins (By similarity).

SAMM50 Antibody (Center) - References

Lai C.-H.,et al.Genome Res. 10:703-713(2000).
Kim J.W.,et al.Submitted (DEC-2002) to the EMBL/GenBank/DDBJ databases.
Ota T.,et al.Nat. Genet. 36:40-45(2004).
Collins J.E.,et al.Genome Biol. 5:R84.1-R84.11(2004).
Suzuki Y.,et al.Submitted (APR-2005) to the EMBL/GenBank/DDBJ databases.

SAMM50 Antibody (Center) is for research use only and not for use in diagnostic or therapeutic procedures.

SAMM50 Antibody (Center) - Protein Information

Name SAMM50

Synonyms SAM50

Function

Plays a crucial role in the maintenance of the structure of mitochondrial cristae and the proper assembly of the mitochondrial respiratory chain complexes (PubMed: [22252321](http://www.uniprot.org/citations/22252321)), PubMed: [25781180](http://www.uniprot.org/citations/25781180)). Required for the assembly of TOMM40 into the TOM complex (PubMed: [15644312](http://www.uniprot.org/citations/15644312)).

Cellular Location

Mitochondrion outer membrane; Multi-pass membrane protein. Cytoplasm {ECO:0000250|UniProtKB:Q6AXV4}. Mitochondrion

SAMM50 Antibody (Center) - Protocols

Provided below are standard protocols that you may find useful for product applications.

- [Western Blot](#)
- [Blocking Peptides](#)
- [Dot Blot](#)
- [Immunohistochemistry](#)
- [Immunofluorescence](#)
- [Immunoprecipitation](#)
- [Flow Cytometry](#)
- [Cell Culture](#)