

CYS1 Antibody (C-term)
Purified Rabbit Polyclonal Antibody (Pab)
Catalog # AP20652c

Specification

CYS1 Antibody (C-term) - Product Information

Application	WB, IHC-P,E
Primary Accession	O717R9
Reactivity	Human, Mouse
Host	Rabbit
Clonality	Polyclonal
Isotype	Rabbit Ig
Calculated MW	16393

CYS1 Antibody (C-term) - Additional Information

Gene ID 192668

Other Names

Cystin-1, Cilia-associated protein, CYS1

Target/Specificity

This CYS1 antibody is generated from a rabbit immunized with a KLH conjugated synthetic peptide between 142-177 amino acids from the C-terminal region of human CYS1.

Dilution

WB~~1:1000

IHC-P~~1:25

Format

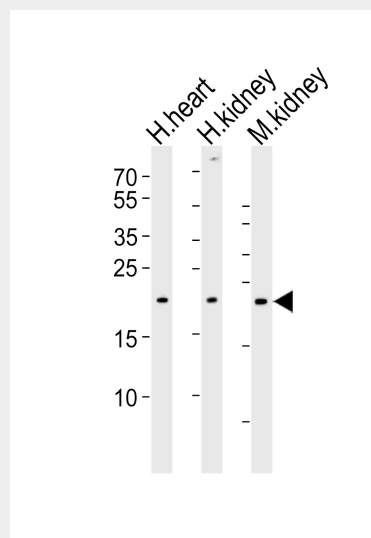
Purified polyclonal antibody supplied in PBS with 0.09% (W/V) sodium azide. This antibody is purified through a protein A column, followed by peptide affinity purification.

Storage

Maintain refrigerated at 2-8°C for up to 2 weeks. For long term storage store at -20°C in small aliquots to prevent freeze-thaw cycles.

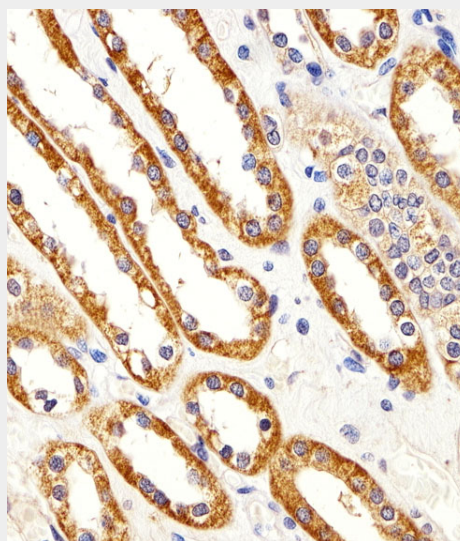
Precautions

CYS1 Antibody (C-term) is for research use only and not for use in diagnostic or therapeutic procedures.



Western blot analysis of lysates from human heart, human kidney and mouse kidney tissue lysate(from left to right), using CYS1 Antibody (C-term)(Cat. #AP20652c).

AP20652c was diluted at 1:1000 at each lane. A goat anti-rabbit IgG H&L(HRP) at 1:5000 dilution was used as the secondary antibody. Lysates at 35ug per lane.



Immunohistochemical analysis of paraffin-embedded H.kidney section using CYS1 Antibody (C-term)(Cat#AP20652c).

CYS1 Antibody (C-term) - Protein Information

Name CYS1

Cellular Location

Cell projection, cilium membrane;
Lipid-anchor. Cytoplasm, cytoskeleton,
cilium axoneme. Note=Expression is
enriched in the ciliary axoneme.
Localization to cilium is mediated via
interaction with UNC119 and UNC119B,
which bind to the myristoyl moiety of the N-
terminus

Tissue Location

Expressed at high levels in the kidney and
pancreas. Moderate expression seen in the
skeletal muscle, liver and heart. A weak
expression seen in the brain, lung, uterus,
prostate, testis, small intestine and colon

CYS1 Antibody (C-term) - Protocols

Provided below are standard protocols that you
may find useful for product applications.

- [Western Blot](#)
- [Blocking Peptides](#)
- [Dot Blot](#)
- [Immunohistochemistry](#)
- [Immunofluorescence](#)
- [Immunoprecipitation](#)
- [Flow Cytometry](#)
- [Cell Culture](#)

AP20652c was diluted at 1:25 dilution. A
peroxidase-conjugated goat anti-rabbit IgG at
1:400 dilution was used as the secondary
antibody, followed by DAB staining.

CYS1 Antibody (C-term) - References

Fliegauf M., et al. *Pediatr. Nephrol.*
18:498-505(2003).
Hou X., et al. *J. Clin. Invest.* 109:533-540(2002).
Wright K.J., et al. *Genes Dev.*
25:2347-2360(2011).