

**DHFR Antibody (N-term)**  
**Purified Rabbit Polyclonal Antibody (Pab)**  
**Catalog # AP20626a**

**Specification**

**DHFR Antibody (N-term) - Product Information**

Application	<b>WB, IHC-P,E</b>
Primary Accession	<a href="#">P00374</a>
Other Accession	<a href="#">P00377</a> , <a href="#">P00375</a> , <a href="#">P00376</a>
Reactivity	<b>Human, Mouse, Rat</b>
Predicted Host	<b>Bovine, Pig Rabbit</b>
Clonality	<b>Polyclonal</b>
Isotype	<b>Rabbit Ig</b>
Calculated MW	<b>21453</b>

**DHFR Antibody (N-term) - Additional Information**

**Gene ID** 1719

**Other Names**

Dihydrofolate reductase, DHFR

**Target/Specificity**

This DHFR antibody is generated from a rabbit immunized with a KLH conjugated synthetic peptide between 16-30 amino acids from the N-terminal region of human DHFR.

**Dilution**

WB~~1:1000

IHC-P~~1:25

**Format**

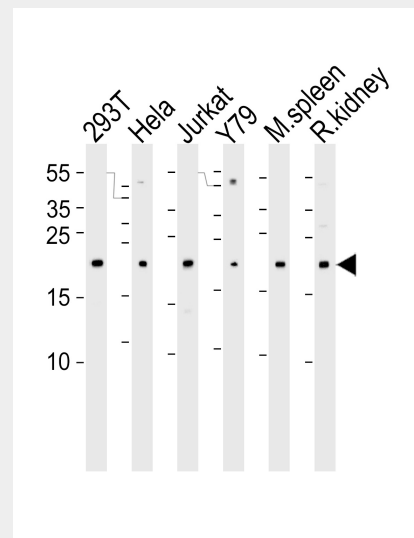
Purified polyclonal antibody supplied in PBS with 0.09% (W/V) sodium azide. This antibody is purified through a protein A column, followed by peptide affinity purification.

**Storage**

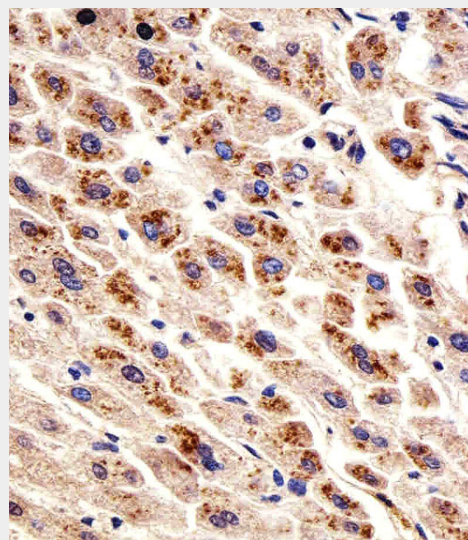
Maintain refrigerated at 2-8°C for up to 2 weeks. For long term storage store at -20°C in small aliquots to prevent freeze-thaw cycles.

**Precautions**

DHFR Antibody (N-term) is for research use



Western blot analysis of lysates from 293T, HeLa, Jurkat, Y79 cell line, mouse spleen and rat kidney tissue lysate (from left to right), using DHFR Antibody (N-term) (Cat. #AP20626a). AP20626a was diluted at 1:1000 at each lane. A goat anti-rabbit IgG H&L (HRP) at 1:5000 dilution was used as the secondary antibody. Lysates at 35ug per lane.



Immunohistochemical analysis of paraffin-embedded H. liver section using

only and not for use in diagnostic or therapeutic procedures.

#### DHFR Antibody (N-term) - Protein Information

**Name** DHFR

#### Function

Key enzyme in folate metabolism. Contributes to the de novo mitochondrial thymidylate biosynthesis pathway. Catalyzes an essential reaction for de novo glycine and purine synthesis, and for DNA precursor synthesis. Binds its own mRNA and that of DHFR2.

#### Cellular Location

Mitochondrion  
{ECO:0000250|UniProtKB:P00375}.  
Cytoplasm  
{ECO:0000250|UniProtKB:P00375}

#### Tissue Location

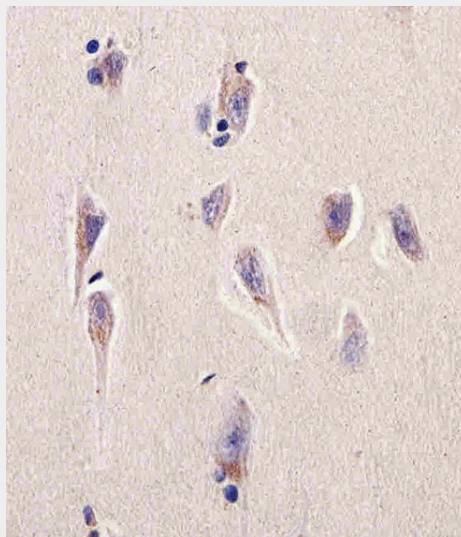
Widely expressed in fetal and adult tissues, including throughout the fetal and adult brains and whole blood. Expression is higher in the adult brain than in the fetal brain.

#### DHFR Antibody (N-term) - Protocols

Provided below are standard protocols that you may find useful for product applications.

- [Western Blot](#)
- [Blocking Peptides](#)
- [Dot Blot](#)
- [Immunohistochemistry](#)
- [Immunofluorescence](#)
- [Immunoprecipitation](#)
- [Flow Cytometry](#)
- [Cell Culture](#)

DHFR Antibody (N-term)(Cat#AP20626a). AP20626a was diluted at 1:25 dilution. An undiluted biotinylated goat polyvalent antibody was used as the secondary, followed by DAB staining.



Immunohistochemical analysis of paraffin-embedded H. brain section using DHFR Antibody (N-term)(Cat#AP20626a). AP20626a was diluted at 1:25 dilution. An undiluted biotinylated goat polyvalent antibody was used as the secondary, followed by DAB staining.

#### DHFR Antibody (N-term) - Background

Key enzyme in folate metabolism. Contributes to the de novo mitochondrial thymidylate biosynthesis pathway. Catalyzes an essential reaction for de novo glycine and purine synthesis, and for DNA precursor synthesis. Binds its own mRNA and that of DHFR1.

#### DHFR Antibody (N-term) - References

Chen M.-J., et al. J. Biol. Chem. 259:3933-3943(1984).  
Masters J.N., et al. Gene 21:59-63(1983).  
Yang J.K., et al. J. Mol. Biol. 176:169-187(1984).  
Schmutz J., et al. Nature 431:268-274(2004).  
Banka S., et al. Am. J. Hum. Genet. 88:216-225(2011).