

**HLA-B Antibody (N-term)**  
**Purified Rabbit Polyclonal Antibody (Pab)**  
**Catalog # AP20563a**

**Specification**

**HLA-B Antibody (N-term) - Product Information**

Application	<b>WB, IHC-P,E</b>
Primary Accession	<a href="#">P30464</a>
Other Accession	<a href="#">P30488</a> , <a href="#">P30486</a> , <a href="#">P30483</a> , <a href="#">P30479</a> , <a href="#">Q04826</a> , <a href="#">P30685</a> , <a href="#">P30466</a>
Reactivity	<b>Human</b>
Host	<b>Rabbit</b>
Clonality	<b>Polyclonal</b>
Isotype	<b>Rabbit Ig</b>

**HLA-B Antibody (N-term) - Additional Information**

**Other Names**

HLA class I histocompatibility antigen, B-15 alpha chain, MHC class I antigen B\*15, HLA-B, HLAB

**Target/Specificity**

This HLA-B antibody is generated from a rabbit immunized with a KLH conjugated synthetic peptide between 75-107 amino acids from the N-terminal region of human HLA-B.

**Dilution**

WB~~1:1000  
IHC-P~~1:25

**Format**

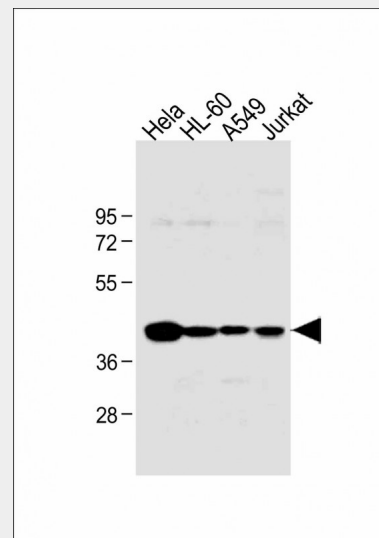
Purified polyclonal antibody supplied in PBS with 0.09% (W/V) sodium azide. This antibody is purified through a protein A column, followed by peptide affinity purification.

**Storage**

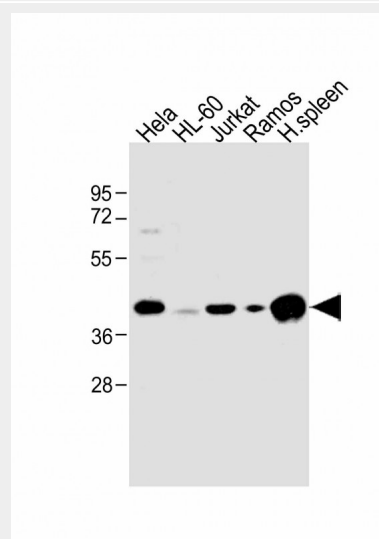
Maintain refrigerated at 2-8°C for up to 2 weeks. For long term storage store at -20°C in small aliquots to prevent freeze-thaw cycles.

**Precautions**

HLA-B Antibody (N-term) is for research use only and not for use in diagnostic or



All lanes : Anti-HLA-B Antibody (N-term) at 1:1000 dilution Lane 1: HeLa whole cell lysate Lane 2: HL-60 whole cell lysate Lane 3: A549 whole cell lysate Lane 4: Jurkat whole cell lysate Lysates/proteins at 20 µg per lane. Secondary Goat Anti-Rabbit IgG, (H+L), Peroxidase conjugated at 1/10000 dilution. Predicted band size : 40 kDa Blocking/Dilution buffer: 5% NFDM/TBST.



All lanes : Anti-HLA-B Antibody (N-term) at 1:1000 dilution Lane 1: HeLa whole cell lysate

therapeutic procedures.

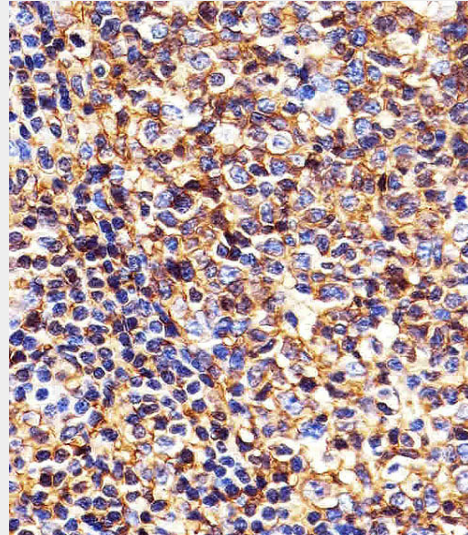
#### HLA-B Antibody (N-term) - Protein Information

#### HLA-B Antibody (N-term) - Protocols

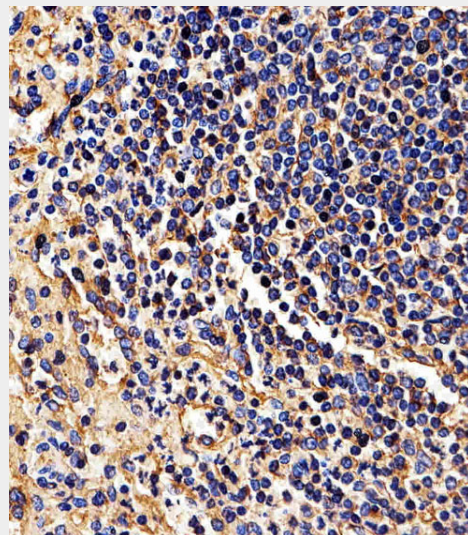
Provided below are standard protocols that you may find useful for product applications.

- [Western Blot](#)
- [Blocking Peptides](#)
- [Dot Blot](#)
- [Immunohistochemistry](#)
- [Immunofluorescence](#)
- [Immunoprecipitation](#)
- [Flow Cytometry](#)
- [Cell Culture](#)

Lane 2: HL-60 whole cell lysate Lane 3: Jurkat whole cell lysate Lane 4: Ramos whole cell lysate Lane 5: human spleen lysate  
Lysates/proteins at 20 µg per lane.  
Secondary Goat Anti-Rabbit IgG, (H+L), Peroxidase conjugated at 1/10000 dilution.  
Predicted band size : 40 kDa  
Blocking/Dilution buffer: 5% NFDM/TBST.

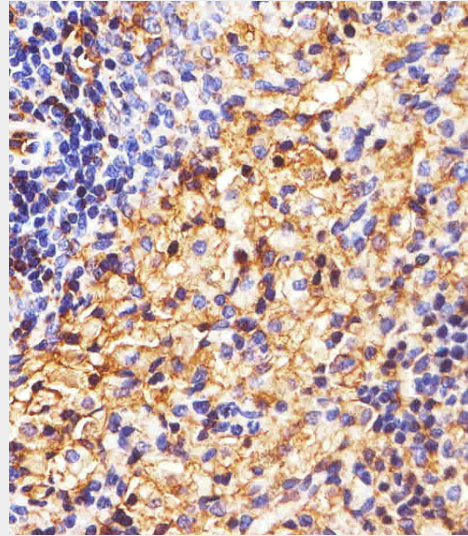


Immunohistochemical analysis of paraffin-embedded H. tonsil section using HLA-B Antibody (N-term)(Cat#AP20563a). AP20563a was diluted at 1:25 dilution. A peroxidase-conjugated goat anti-rabbit IgG at 1:400 dilution was used as the secondary antibody, followed by DAB staining.

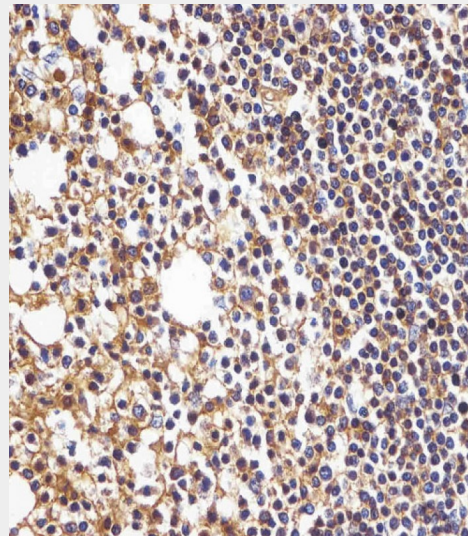


Immunohistochemical analysis of paraffin-embedded H. spleen section using HLA-B Antibody (N-term)(Cat#AP20563a). AP20563a was diluted at 1:25 dilution. A peroxidase-conjugated goat anti-rabbit IgG at

1:400 dilution was used as the secondary antibody, followed by DAB staining.



Immunohistochemical analysis of paraffin-embedded R. spleen section using HLA-B Antibody (N-term)(Cat#AP20563a). AP20563a was diluted at 1:25 dilution. A peroxidase-conjugated goat anti-rabbit IgG at 1:400 dilution was used as the secondary antibody, followed by DAB staining.



AP20563a staining HLA-B in human tonsil tissue sections by Immunohistochemistry (IHC-P - paraformaldehyde-fixed, paraffin-embedded sections). Tissue was fixed with formaldehyde and blocked with 3% BSA for 0.5 hour at room temperature; antigen retrieval was by heat mediation with a citrate buffer (pH6). Samples were incubated with primary antibody (1/25) for 1 hour at 37°C. A undiluted biotinylated goat polyvalent antibody was used as the

secondary antibody.

### **HLA-B Antibody (N-term) - Background**

Involved in the presentation of foreign antigens to the immune system.

### **HLA-B Antibody (N-term) - References**

Little A.-M.,et al.Tissue Antigens  
38:186-190(1991).  
Hildebrand W.H.,et al.Tissue Antigens  
43:209-218(1994).  
Lin L.,et al.Tissue Antigens 47:265-274(1996).  
Madrigal J.A.,et al.J. Immunol.  
149:3411-3415(1992).  
Watkins D.I.,et al.Nature 357:329-333(1992).