

POLR2C Antibody (C-term)
Affinity Purified Rabbit Polyclonal Antibody (Pab)
Catalog # AP20520b

Specification

POLR2C Antibody (C-term) - Product Information

Application	IF, WB, IHC-P,E
Primary Accession	P19387
Other Accession	P97760 , Q3T0Q3
Reactivity	Human, Mouse
Predicted	Bovine
Host	Rabbit
Clonality	Polyclonal
Isotype	Rabbit Ig
Calculated MW	31441
Antigen Region	200-228

POLR2C Antibody (C-term) - Additional Information

Gene ID 5432

Other Names

DNA-directed RNA polymerase II subunit RPB3, RNA polymerase II subunit 3, RNA polymerase II subunit B3, DNA-directed RNA polymerase II 33 kDa polypeptide, RPB33, DNA-directed RNA polymerase II subunit C, RPB31, POLR2C

Target/Specificity

This POLR2C antibody is generated from rabbits immunized with a KLH conjugated synthetic peptide between 200-228 amino acids from the C-terminal region of human POLR2C.

Dilution

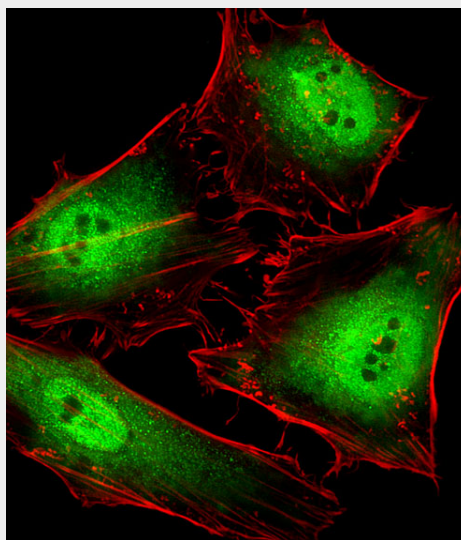
IF~~1:25
WB~~1:1000
IHC-P~~1:100

Format

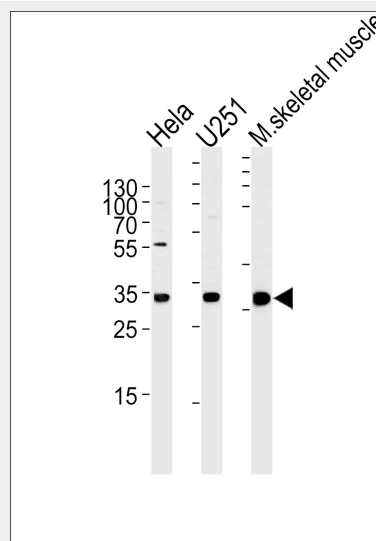
Purified polyclonal antibody supplied in PBS with 0.09% (W/V) sodium azide. This antibody is purified through a protein A column, followed by peptide affinity purification.

Storage

Maintain refrigerated at 2-8°C for up to 2



Fluorescent image of HeLa cells stained with POLR2C Antibody (C-term)(Cat#AP20520B). AP20520B was diluted at 1:25 dilution. An Alexa Fluor 488-conjugated goat anti-rabbit IgG at 1:400 dilution was used as the secondary antibody (green). Cytoplasmic actin was counterstained with Alexa Fluor® 555 conjugated with Phalloidin (red).



POLR2C Antibody (C-term) (Cat. #AP20520b) western blot analysis in HeLa,U251 cell line and mouse skeletal muscle tissue lysates

weeks. For long term storage store at -20°C in small aliquots to prevent freeze-thaw cycles.

Precautions

POLR2C Antibody (C-term) is for research use only and not for use in diagnostic or therapeutic procedures.

POLR2C Antibody (C-term) - Protein Information

Name POLR2C ([HGNC:9189](#))

Function

DNA-dependent RNA polymerase catalyzes the transcription of DNA into RNA using the four ribonucleoside triphosphates as substrates. Component of RNA polymerase II which synthesizes mRNA precursors and many functional non-coding RNAs. Pol II is the central component of the basal RNA polymerase II transcription machinery. It is composed of mobile elements that move relative to each other. RPB3 is part of the core element with the central large cleft and the clamp element that moves to open and close the cleft (By similarity).

Cellular Location

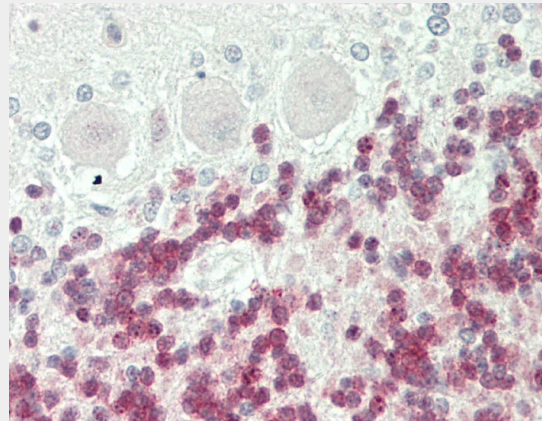
Nucleus.

POLR2C Antibody (C-term) - Protocols

Provided below are standard protocols that you may find useful for product applications.

- [Western Blot](#)
- [Blocking Peptides](#)
- [Dot Blot](#)
- [Immunohistochemistry](#)
- [Immunofluorescence](#)
- [Immunoprecipitation](#)
- [Flow Cytometry](#)
- [Cell Culture](#)

(35ug/lane). This demonstrates the POLR2C antibody detected the POLR2C protein (arrow).



Formalin-fixed and paraffin-embedded H.brain, H.cerebellum tissue reacted with POLR2C Antibody (C-term) (Cat#AP20520b).

POLR2C Antibody (C-term) - Background

DNA-dependent RNA polymerase catalyzes the transcription of DNA into RNA using the four ribonucleoside triphosphates as substrates. Component of RNA polymerase II which synthesizes mRNA precursors and many functional non-coding RNAs. Pol II is the central component of the basal RNA polymerase II transcription machinery. It is composed of mobile elements that move relative to each other. RPB3 is part of the core element with the central large cleft and the clamp element that moves to open and close the cleft (By similarity).

POLR2C Antibody (C-term) - References

- Pati U.K., et al. J. Biol. Chem. 265:8400-8403(1990).
Dammann R., et al. Biochim. Biophys. Acta 1396:153-157(1998).
Bruno T., et al. Submitted (FEB-1998) to the EMBL/GenBank/DDBJ databases.
Loftus B.J., et al. Genomics 60:295-308(1999).
Bienvenut W.V., et al. Submitted (MAR-2009) to UniProtKB.