

SGCG Antibody (Center)
Affinity Purified Rabbit Polyclonal Antibody (Pab)
Catalog # AP20498c

Specification

SGCG Antibody (Center) - Product Information

Application	WB, IHC-P,E
Primary Accession	O13326
Other Accession	Q0VCU7
Reactivity	Human
Predicted	Bovine
Host	Rabbit
Clonality	Polyclonal
Isotype	Rabbit Ig
Calculated MW	32379
Antigen Region	145-172

SGCG Antibody (Center) - Additional Information

Gene ID 6445

Other Names

Gamma-sarcoglycan, Gamma-SG, 35 kDa dystrophin-associated glycoprotein, 35DAG, SGCG

Target/Specificity

This SGCG antibody is generated from rabbits immunized with a KLH conjugated synthetic peptide between 145-172 amino acids from the Central region of human SGCG.

Dilution

WB~~1:1000
IHC-P~~1:25

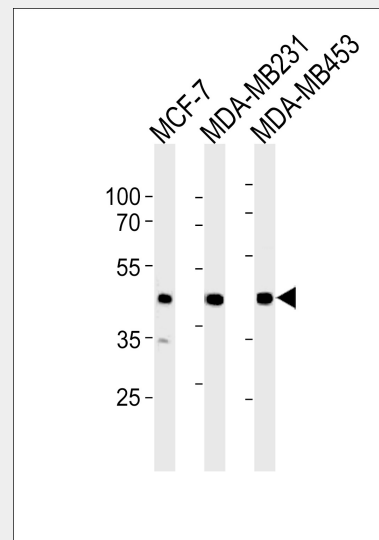
Format

Purified polyclonal antibody supplied in PBS with 0.09% (W/V) sodium azide. This antibody is purified through a protein A column, followed by peptide affinity purification.

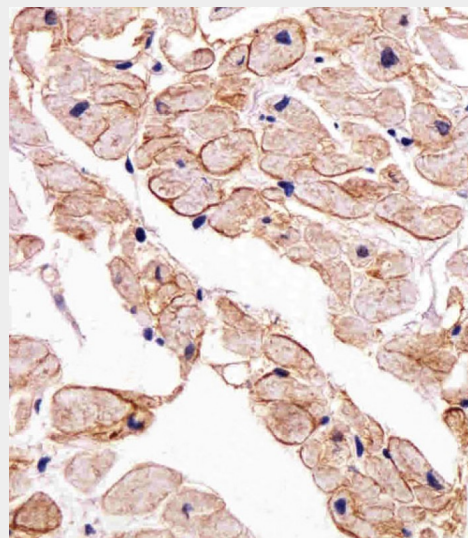
Storage

Maintain refrigerated at 2-8°C for up to 2 weeks. For long term storage store at -20°C in small aliquots to prevent freeze-thaw cycles.

Precautions



SGCG Antibody (Center) (Cat. #AP20498c) western blot analysis in MCF-7,MDA-MB231,MDA-MB453 cell line lysates (35ug/lane).This demonstrates the SGCG antibody detected the SGCG protein (arrow).



Immunohistochemical analysis of paraffin-embedded H. heart section using SGCG Antibody (Center)(Cat#AP20498C). AP20498C was diluted at 1:25 dilution. A undiluted biotinylated goat polyvalent

SGCG Antibody (Center) is for research use only and not for use in diagnostic or therapeutic procedures.

antibody was used as the secondary, followed by DAB staining.

SGCG Antibody (Center) - Protein Information

Name SGCG

Function

Component of the sarcoglycan complex, a subcomplex of the dystrophin-glycoprotein complex which forms a link between the F-actin cytoskeleton and the extracellular matrix.

Cellular Location

Cell membrane, sarcolemma; Single-pass type II membrane protein. Cytoplasm, cytoskeleton

Tissue Location

Expressed in skeletal and heart muscle.

SGCG Antibody (Center) - Background

Component of the sarcoglycan complex, a subcomplex of the dystrophin-glycoprotein complex which forms a link between the F-actin cytoskeleton and the extracellular matrix.

SGCG Antibody (Center) - References

Noguchi S., et al. Science 270:819-822(1995).
McNally E.M., et al. Am. J. Hum. Genet. 59:1040-1047(1996).
Dunham A., et al. Nature 428:522-528(2004).
Thompson T.G., et al. J. Cell Biol. 148:115-126(2000).
Piccolo F., et al. Hum. Mol. Genet. 5:2019-2022(1996).

SGCG Antibody (Center) - Protocols

Provided below are standard protocols that you may find useful for product applications.

- [Western Blot](#)
- [Blocking Peptides](#)
- [Dot Blot](#)
- [Immunohistochemistry](#)
- [Immunofluorescence](#)
- [Immunoprecipitation](#)
- [Flow Cytometry](#)
- [Cell Culture](#)