

**TSPYL2 Antibody (Center)**  
**Affinity Purified Rabbit Polyclonal Antibody (Pab)**  
 Catalog # AP20456c

**Specification**

**TSPYL2 Antibody (Center) - Product Information**

Application	<b>WB,E</b>
Primary Accession	<a href="#">Q9H2G4</a>
Other Accession	<a href="#">Q9BE64</a>
Reactivity	<b>Human</b>
Predicted	<b>Monkey</b>
Host	<b>Rabbit</b>
Clonality	<b>Polyclonal</b>
Isotype	<b>Rabbit Ig</b>
Calculated MW	<b>79435</b>
Antigen Region	<b>380-409</b>

**TSPYL2 Antibody (Center) - Additional Information**

**Gene ID** 64061

**Other Names**

Testis-specific Y-encoded-like protein 2, TSPY-like protein 2, Cell division autoantigen 1, Cutaneous T-cell lymphoma-associated antigen se20-4, CTCL-associated antigen se20-4, Differentially-expressed nucleolar TGF-beta1 target protein, Nuclear protein of 79 kDa, NP79, TSPYL2, CDA1, DENTT, TSPX

**Target/Specificity**

This TSPYL2 antibody is generated from rabbits immunized with a KLH conjugated synthetic peptide between 380-409 amino acids from the Central region of human TSPYL2.

**Dilution**

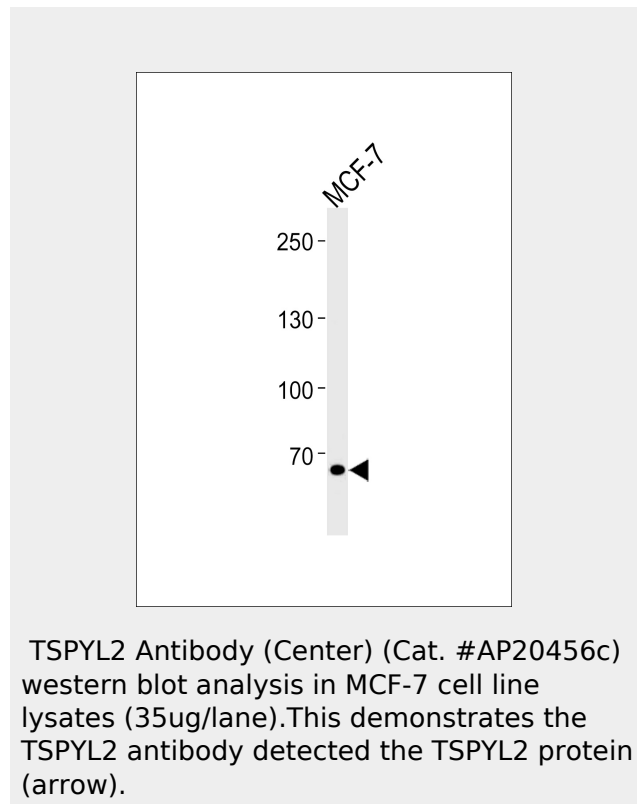
WB~~1:1000

**Format**

Purified polyclonal antibody supplied in PBS with 0.09% (W/V) sodium azide. This antibody is purified through a protein A column, followed by peptide affinity purification.

**Storage**

Maintain refrigerated at 2-8°C for up to 2



**TSPYL2 Antibody (Center) - Background**

Part of the CASK/TRB1/TSPYL2 transcriptional complex which modulates gene expression in response to neuronal synaptic activity, probably by facilitating nucleosome assembly. May inhibit cell proliferation by inducing p53-dependent CDKN1A expression.

**TSPYL2 Antibody (Center) - References**

- Dephoure N., et al. Proc. Natl. Acad. Sci. U.S.A. 105:10762-10767(2008).
- Chai Z., et al. J. Biol. Chem. 276:33665-33674(2001).
- Eichmueller S., et al. Proc. Natl. Acad. Sci. U.S.A. 98:629-634(2001).
- Bechtel S., et al. BMC Genomics 8:399-399(2007).
- Ross M.T., et al. Nature 434:325-337(2005).

weeks. For long term storage store at -20°C in small aliquots to prevent freeze-thaw cycles.

**Precautions**

TSPYL2 Antibody (Center) is for research use only and not for use in diagnostic or therapeutic procedures.

**TSPYL2 Antibody (Center) - Protein Information**

**Name** TSPYL2

**Synonyms** CDA1, DENTT, TSPX

**Function**

Part of the CASK/TBR1/TSPYL2 transcriptional complex which modulates gene expression in response to neuronal synaptic activity, probably by facilitating nucleosome assembly. May inhibit cell proliferation by inducing p53-dependent CDKN1A expression.

**Cellular Location**

Nucleus. Cytoplasm. Note=Enriched in transcriptionally active regions of chromatin in neurons

**Tissue Location**

Ubiquitously expressed, with highest levels in brain, testis and heart, and lowest levels in liver and pancreas

**TSPYL2 Antibody (Center) - Protocols**

Provided below are standard protocols that you may find useful for product applications.

- [Western Blot](#)
- [Blocking Peptides](#)
- [Dot Blot](#)
- [Immunohistochemistry](#)
- [Immunofluorescence](#)
- [Immunoprecipitation](#)
- [Flow Cytometry](#)
- [Cell Culture](#)