

MORC3 Antibody (Center)
Affinity Purified Rabbit Polyclonal Antibody (Pab)
Catalog # AP20433c

Specification

MORC3 Antibody (Center) - Product Information

Application	WB, IHC-P,E
Primary Accession	Q14149
Reactivity	Human
Host	Rabbit
Clonality	Polyclonal
Isotype	Rabbit Ig
Antigen Region	634-663

MORC3 Antibody (Center) - Additional Information

Gene ID 23515

Other Names

MORC family CW-type zinc finger protein 3,
Zinc finger CW-type coiled-coil domain
protein 3, MORC3, KIAA0136, ZCWCC3

Target/Specificity

This MORC3 antibody is generated from rabbits immunized with a KLH conjugated synthetic peptide between 634-663 amino acids from the Central region of human MORC3.

Dilution

WB~~1:1000
IHC-P~~1:100

Format

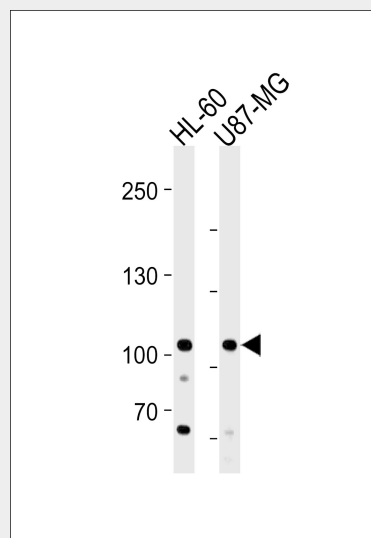
Purified polyclonal antibody supplied in PBS with 0.09% (W/V) sodium azide. This antibody is purified through a protein A column, followed by peptide affinity purification.

Storage

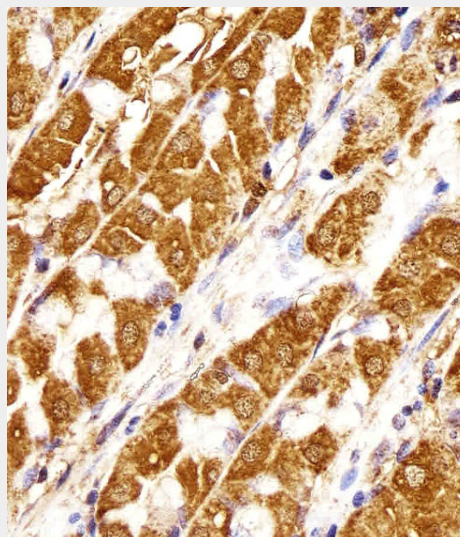
Maintain refrigerated at 2-8°C for up to 2 weeks. For long term storage store at -20°C in small aliquots to prevent freeze-thaw cycles.

Precautions

MORC3 Antibody (Center) is for research use only and not for use in diagnostic or



MORC3 Antibody (Center) (Cat. #AP20433c) western blot analysis in HL-60 and U87-MG cell line lysates (35ug/lane). This demonstrates the MORC3 antibody detected the MORC3 protein (arrow).



Immunohistochemical analysis of paraffin-embedded H. stomach section using MORC3 Antibody (Center) (Cat#AP20433c). AP20433c was diluted at 1:25 dilution. A undiluted biotinylated goat polyvalent antibody was used as the secondary,

therapeutic procedures.

MORC3 Antibody (Center) - Protein Information

Name MORC3 ([HGNC:23572](#))

Function

Nuclear factor which forms MORC3-NBs (nuclear bodies) via an ATP-dependent mechanism (PubMed:20501696). Sumoylated MORC3-NBs can also associate with PML-NBs (PubMed:20501696). Recruits TP53 and SP100 to PML-NBs, thus regulating TP53 activity (PubMed:17332504). Binds RNA in vitro (PubMed:11927593). May be required for influenza A transcription during viral infection (PubMed:26202233). Histone methylation reader which binds to non-methylated (H3K4me0), monomethylated (H3K4me1), dimethylated (H3K4me2) and trimethylated (H3K4me3) 'Lys-4' on histone H3 (PubMed:26933034). The order of binding preference is H3K4me3 > H3K4me2 > H3K4me1 > H3K4me0 (PubMed:26933034).

Cellular Location

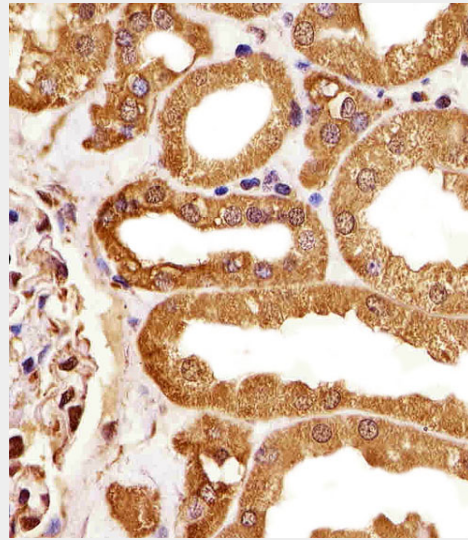
Nucleus, nucleoplasm. Nucleus matrix
Nucleus, PML body. Note=Also found in PML-independent nuclear bodies.
Localization to nuclear bodies is ATP-dependent.

Tissue Location

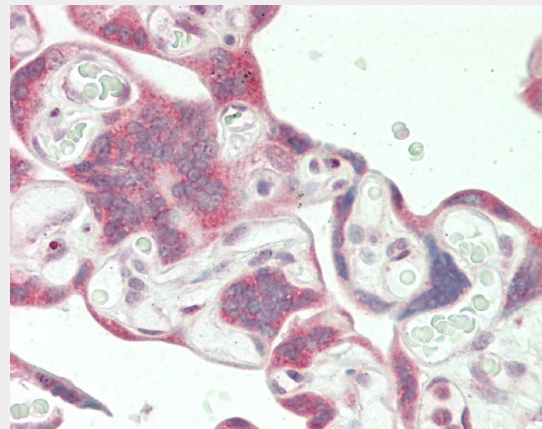
Expressed in heart, placenta, skeletal muscle, brain, pancreas, lung, liver, but not kidney

MORC3 Antibody (Center) - Protocols

followed by DAB staining.



Immunohistochemical analysis of paraffin-embedded H. kidney section using MORC3 Antibody (Center)(Cat#AP20433c). AP20433c was diluted at 1:25 dilution. A undiluted biotinylated goat polyvalent antibody was used as the secondary, followed by DAB staining.



Formalin-fixed and paraffin-embedded H.placenta tissue reacted with MORC3 Antibody (Center) (Cat#AP20433c).

MORC3 Antibody (Center) - Background

This gene encodes a protein that localizes to the nuclear matrix. The protein also has RNA binding activity, and has a predicted coiled coil domain.

MORC3 Antibody (Center) - References

Nagase T., et al. DNA Res. 2:167-174(1995).

Provided below are standard protocols that you may find useful for product applications.

- [Western Blot](#)
- [Blocking Peptides](#)
- [Dot Blot](#)
- [Immunohistochemistry](#)
- [Immunofluorescence](#)
- [Immunoprecipitation](#)
- [Flow Cytometry](#)
- [Cell Culture](#)

Ota T., et al. Nat. Genet. 36:40-45(2004).
Hattori M., et al. Nature 405:311-319(2000).
Burkard T.R., et al. BMC Syst. Biol.
5:17-17(2011).