

CCNB3 Antibody (C-term S1331/S1333)
Affinity Purified Rabbit Polyclonal Antibody (Pab)
Catalog # AP20414b

Specification

CCNB3 Antibody (C-term S1331/S1333) - Product Information

Application	WB,E
Primary Accession	Q8WWL7
Reactivity	Human
Host	Rabbit
Clonality	Polyclonal
Isotype	Rabbit Ig
Calculated MW	157916
Antigen Region	1311-1338

CCNB3 Antibody (C-term S1331/S1333) - Additional Information

Gene ID 85417

Other Names

G2/mitotic-specific cyclin-B3, CCNB3, CYCB3

Target/Specificity

This CCNB3 antibody is generated from rabbits immunized with a KLH conjugated synthetic peptide between 1311-1338 amino acids from the C-terminal region of human CCNB3.

Dilution

WB~~1:1000

Format

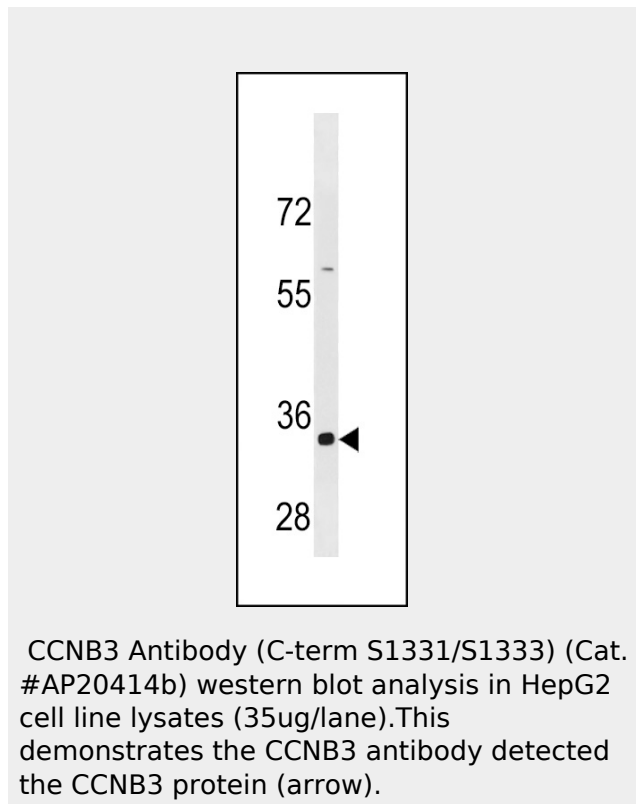
Purified polyclonal antibody supplied in PBS with 0.09% (W/V) sodium azide. This antibody is purified through a protein A column, followed by peptide affinity purification.

Storage

Maintain refrigerated at 2-8°C for up to 2 weeks. For long term storage store at -20°C in small aliquots to prevent freeze-thaw cycles.

Precautions

CCNB3 Antibody (C-term S1331/S1333) is for research use only and not for use in



CCNB3 Antibody (C-term S1331/S1333) - Background

Cyclins are positive regulatory subunits of the cyclin-dependent kinases (CDKs), and thereby play an essential role in the control of the cell cycle, notably via their destruction during cell division. Its tissue specificity suggest that it may be required during early meiotic prophase I.

diagnostic or therapeutic procedures.

CCNB3 Antibody (C-term S1331/S1333) - Protein Information

Name CCNB3

Synonyms CYCB3

Function

Cyclins are positive regulatory subunits of the cyclin- dependent kinases (CDKs), and thereby play an essential role in the control of the cell cycle, notably via their destruction during cell division. Its tissue specificity suggest that it may be required during early meiotic prophase I.

Cellular Location

Nucleus.

Tissue Location

Testis specific. In testis, it is expressed in developing germ cells, but not in Leydig cells. Weakly or not expressed in other tissues.

CCNB3 Antibody (C-term S1331/S1333) - Protocols

Provided below are standard protocols that you may find useful for product applications.

- [Western Blot](#)
- [Blocking Peptides](#)
- [Dot Blot](#)
- [Immunohistochemistry](#)
- [Immunofluorescence](#)
- [Immunoprecipitation](#)
- [Flow Cytometry](#)
- [Cell Culture](#)