

**SPAG6 Antibody (C-term)**  
**Affinity Purified Rabbit Polyclonal Antibody (Pab)**  
**Catalog # AP20398b**

**Specification**

**SPAG6 Antibody (C-term) - Product Information**

Application	<b>WB,E</b>
Primary Accession	<a href="#">O75602</a>
Other Accession	<a href="#">Q9JL17</a>
Reactivity	<b>Human</b>
Predicted	<b>Mouse</b>
Host	<b>Rabbit</b>
Clonality	<b>Polyclonal</b>
Isotype	<b>Rabbit Ig</b>
Calculated MW	<b>55476</b>
Antigen Region	<b>422-448</b>

**SPAG6 Antibody (C-term) - Additional Information**

**Gene ID** 9576

**Other Names**

Sperm-associated antigen 6, Protein PF16 homolog, Repro-SA-1, Sperm flagellar protein, SPAG6, PF16

**Target/Specificity**

This SPAG6 antibody is generated from rabbits immunized with a KLH conjugated synthetic peptide between 422-448 amino acids from the C-terminal region of human SPAG6.

**Dilution**

WB~~1:1000

**Format**

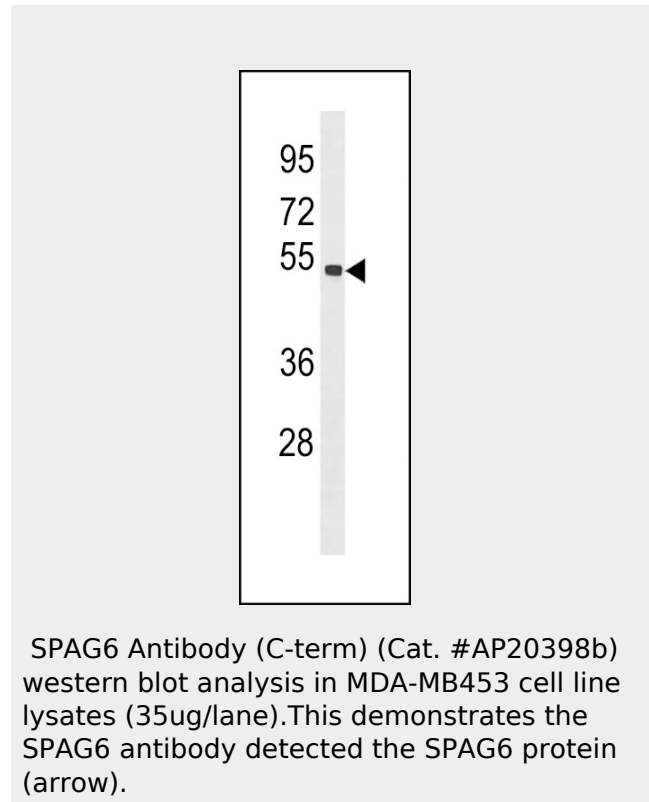
Purified polyclonal antibody supplied in PBS with 0.09% (W/V) sodium azide. This antibody is purified through a protein A column, followed by peptide affinity purification.

**Storage**

Maintain refrigerated at 2-8°C for up to 2 weeks. For long term storage store at -20°C in small aliquots to prevent freeze-thaw cycles.

**Precautions**

SPAG6 Antibody (C-term) is for research use



**SPAG6 Antibody (C-term) - Background**

Important for structural integrity of the central apparatus in the sperm tail and for flagellar motility (By similarity).

only and not for use in diagnostic or therapeutic procedures.

#### **SPAG6 Antibody (C-term) - Protein Information**

**Name** SPAG6

**Synonyms** PF16

#### **Function**

Important for structural integrity of the central apparatus in the sperm tail and for flagellar motility.

#### **Cellular Location**

Cytoplasm, cytoskeleton. Cell projection, cilium, flagellum. Cytoplasm, cytoskeleton, cilium axoneme {ECO:0000250|UniProtKB:Q9JLI7}.  
Note=Associated with microtubules  
Detected on the sperm flagellum (PubMed:10493827). Localizes in the cilium axoneme in a SPEF1-dependent manner (By similarity) {ECO:0000250|UniProtKB:Q9JLI7, ECO:0000269|PubMed:10493827}

#### **Tissue Location**

Highly expressed in testis.

#### **SPAG6 Antibody (C-term) - Protocols**

Provided below are standard protocols that you may find useful for product applications.

- [Western Blot](#)
- [Blocking Peptides](#)
- [Dot Blot](#)
- [Immunohistochemistry](#)
- [Immunofluorescence](#)
- [Immunoprecipitation](#)
- [Flow Cytometry](#)
- [Cell Culture](#)

#### **SPAG6 Antibody (C-term) - Citations**

- [Transient scrotal hyperthermia affects human sperm DNA integrity, sperm apoptosis, and sperm protein expression.](#)