

**TMX1 Antibody (C-term)**  
**Affinity Purified Rabbit Polyclonal Antibody (Pab)**  
**Catalog # AP20365b**

## Specification

### TMX1 Antibody (C-term) - Product Information

Application	<b>WB,E</b>
Primary Accession	<a href="#">O9H3N1</a>
Reactivity	<b>Human</b>
Host	<b>Rabbit</b>
Clonality	<b>Polyclonal</b>
Isotype	<b>Rabbit Ig</b>
Calculated MW	<b>31791</b>
Antigen Region	<b>239-267</b>

### TMX1 Antibody (C-term) - Additional Information

**Gene ID** 81542

#### Other Names

Thioredoxin-related transmembrane protein 1, Thioredoxin domain-containing protein 1, Transmembrane Trx-related protein, TMX1, TMX, TXNDC, TXNDC1

#### Target/Specificity

This TMX1 antibody is generated from rabbits immunized with a KLH conjugated synthetic peptide between 239-267 amino acids from the C-terminal region of human TMX1.

#### Dilution

WB~~1:1000

#### Format

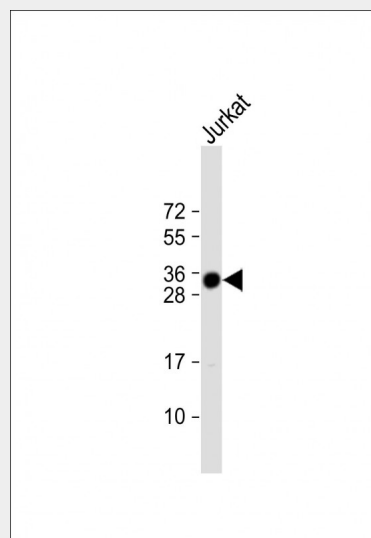
Purified polyclonal antibody supplied in PBS with 0.09% (W/V) sodium azide. This antibody is purified through a protein A column, followed by peptide affinity purification.

#### Storage

Maintain refrigerated at 2-8°C for up to 2 weeks. For long term storage store at -20°C in small aliquots to prevent freeze-thaw cycles.

#### Precautions

TMX1 Antibody (C-term) is for research use only and not for use in diagnostic or



Anti-TMX1 Antibody (C-term) at 1:1000 dilution + Jurkat whole cell lysate  
Lysates/proteins at 20 µg per lane.  
Secondary Goat Anti-Rabbit IgG, (H+L), Peroxidase conjugated at 1/10000 dilution.  
Predicted band size : 32 kDa  
Blocking/Dilution buffer: 5% NFDM/TBST.

### TMX1 Antibody (C-term) - Background

May participate in various redox reactions through the reversible oxidation of its active center dithiol to a disulfide and catalyze dithiol-disulfide exchange reactions.

therapeutic procedures.

#### **TMX1 Antibody (C-term) - Protein Information**

**Name** TMX1

**Synonyms** TMX, TXNDC, TXNDC1

#### **Function**

May participate in various redox reactions through the reversible oxidation of its active center dithiol to a disulfide and catalyze dithiol-disulfide exchange reactions.

#### **Cellular Location**

Membrane; Single-pass type I membrane protein. Endoplasmic reticulum membrane; Single-pass type I membrane protein  
Note=Predominantly found in the endoplasmic reticulum

#### **Tissue Location**

Ubiquitous. Highly expressed in kidney, liver, placenta and lung

#### **TMX1 Antibody (C-term) - Protocols**

Provided below are standard protocols that you may find useful for product applications.

- [Western Blot](#)
- [Blocking Peptides](#)
- [Dot Blot](#)
- [Immunohistochemistry](#)
- [Immunofluorescence](#)
- [Immunoprecipitation](#)
- [Flow Cytometry](#)
- [Cell Culture](#)