

HDGR2 Antibody (N-term)
Affinity Purified Rabbit Polyclonal Antibody (Pab)
Catalog # AP20245A

Specification

HDGR2 Antibody (N-term) - Product Information

Application	WB,E
Primary Accession	Q7Z4V5
Other Accession	Q5XXA9 , Q32N87 , Q925G1 , Q3UMU9 , NP_001001520.1
Reactivity Predicted	Human Mouse, Rat, Xenopus, Chicken
Host	Rabbit
Clonality	Polyclonal
Isotype	Rabbit Ig
Calculated MW	74317
Antigen Region	51-79

HDGR2 Antibody (N-term) - Additional Information

Gene ID 84717

Other Names

Hepatoma-derived growth factor-related protein 2, HRP-2, Hepatoma-derived growth factor 2, HDGF-2, HDGFRP2, HDGF2

Target/Specificity

This HDGR2 antibody is generated from rabbits immunized with a KLH conjugated synthetic peptide between 51-79 amino acids from the N-terminal region of human HDGR2.

Dilution

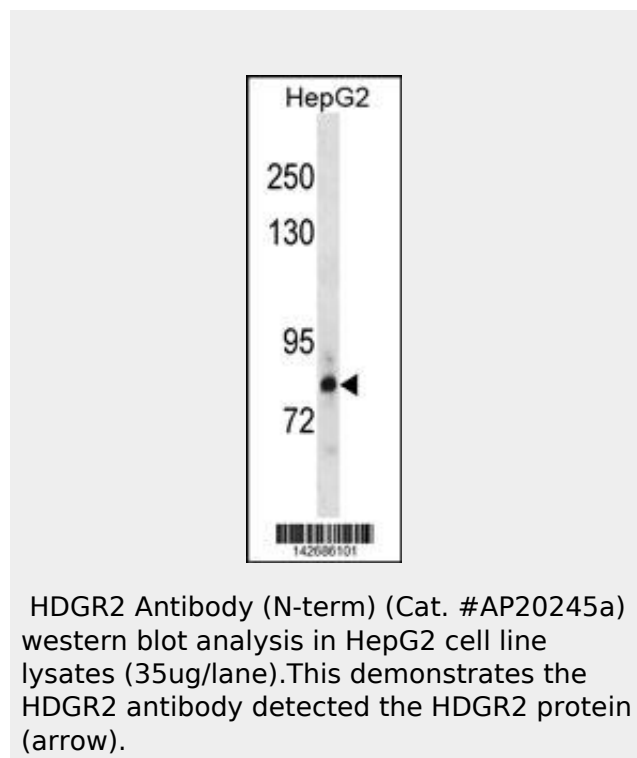
WB~~1:1000

Format

Purified polyclonal antibody supplied in PBS with 0.09% (W/V) sodium azide. This antibody is purified through a protein A column, followed by peptide affinity purification.

Storage

Maintain refrigerated at 2-8°C for up to 2 weeks. For long term storage store at -20°C in small aliquots to prevent freeze-thaw



HDGR2 Antibody (N-term) - Background

This gene encodes a member of the hepatoma-derived growth factor (HDGF) family. Two alternatively spliced transcript variants encoding slightly different isoforms have been found for this gene.

HDGR2 Antibody (N-term) - References

- Matsuoka, S., et al. *Science* 316(5828):1160-1166(2007)
- Ewing, R.M., et al. *Mol. Syst. Biol.* 3, 89 (2007)
- Olsen, J.V., et al. *Cell* 127(3):635-648(2006)
- Vandegraaff, N., et al. *Virology* 346(2):415-426(2006)
- Clark, H.F., et al. *Genome Res.* 13(10):2265-2270(2003)

cycles.

Precautions

HDGR2 Antibody (N-term) is for research use only and not for use in diagnostic or therapeutic procedures.

HDGR2 Antibody (N-term) - Protein Information

Name HDGFL2 ([HGNC:14680](#))

Synonyms HDGF2, HDGFRP2, HRP2

Function

Involved in cellular growth control, through the regulation of cyclin D1 expression.

Cellular Location

Nucleus
{ECO:0000250|UniProtKB:Q3UMU9}.

Tissue Location

Widely expressed. High expression is found in heart, skeletal muscle, ovary and testis. Overexpression is frequently observed in hepatocellular carcinoma samples

HDGR2 Antibody (N-term) - Protocols

Provided below are standard protocols that you may find useful for product applications.

- [Western Blot](#)
- [Blocking Peptides](#)
- [Dot Blot](#)
- [Immunohistochemistry](#)
- [Immunofluorescence](#)
- [Immunoprecipitation](#)
- [Flow Cytometry](#)
- [Cell Culture](#)