

**CMKLR1 Antibody (C-term)**  
**Affinity Purified Rabbit Polyclonal Antibody (Pab)**  
**Catalog # AP20213b**

**Specification**

**CMKLR1 Antibody (C-term) - Product Information**

Application	WB,E
Primary Accession	<a href="#">Q99788</a>
Other Accession	<a href="#">B1PHQ8</a> , <a href="#">NP_004063.1</a>
Reactivity	Human
Predicted	Pig
Host	Rabbit
Clonality	Polyclonal
Isotype	Rabbit Ig
Calculated MW	42322
Antigen Region	305-333

**CMKLR1 Antibody (C-term) - Additional Information**

**Gene ID** 1240

**Other Names**

Chemokine-like receptor 1, G-protein coupled receptor ChemR23, G-protein coupled receptor DEZ, CMKLR1, CHEMR23, DEZ

**Target/Specificity**

This CMKLR1 antibody is generated from rabbits immunized with a KLH conjugated synthetic peptide between 305-333 amino acids from the C-terminal region of human CMKLR1.

**Dilution**

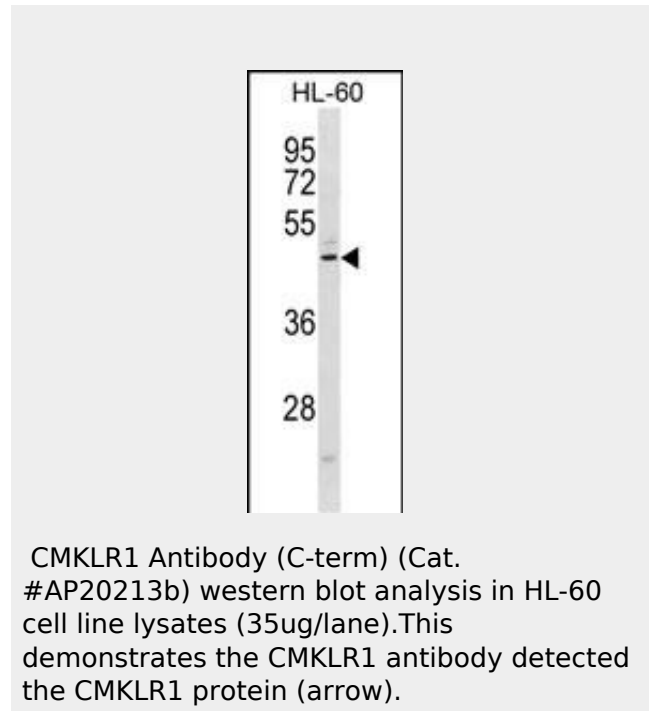
WB~~1:1000

**Format**

Purified polyclonal antibody supplied in PBS with 0.09% (W/V) sodium azide. This antibody is purified through a protein A column, followed by peptide affinity purification.

**Storage**

Maintain refrigerated at 2-8°C for up to 2 weeks. For long term storage store at -20°C in small aliquots to prevent freeze-thaw cycles.



**CMKLR1 Antibody (C-term) - Background**

Orphan receptor. Could be a chemotactic peptide receptor. May have a function in bone metabolism. Acts as a coreceptor for several SIV strains (SIVMAC316, SIVMAC239, SIVMACL7E-FR and SIVSM62A), as well as a primary HIV-1 strain (92UG024-2).

**CMKLR1 Antibody (C-term) - References**

- Rose, J.E., et al. Mol. Med. 16 (7-8), 247-253 (2010) :
- Davila, S., et al. Genes Immun. 11(3):232-238(2010)
- Ohira, T., et al. J. Biol. Chem. 285(5):3451-3461(2010)
- Kaur, J., et al. Biochem. Biophys. Res. Commun. 391(4):1762-1768(2010)
- Skrzeczynska-Moncznik, J., et al. Biochem. Biophys. Res. Commun. 380(2):323-327(2009)

**Precautions**

CMKLR1 Antibody (C-term) is for research use only and not for use in diagnostic or therapeutic procedures.

**CMKLR1 Antibody (C-term) - Protein Information**

**Name** CMKLR1

**Synonyms** CHEMR23, DEZ

**Function**

Receptor for the chemoattractant adipokine chemerin/RARRES2 and for the omega-3 fatty acid derived molecule resolvin E1. Interaction with RARRES2 induces activation of intracellular signaling molecules, such as SKY, MAPK1/3 (ERK1/2), MAPK14/P38MAPK and PI3K leading to multifunctional effects, like, reduction of immune responses, enhancing of adipogenesis and angiogenesis. Resolvin E1 down- regulates cytokine production in macrophages by reducing the activation of MAPK1/3 (ERK1/2) and NF-kappa-B. Positively regulates adipogenesis and adipocyte metabolism. Acts as a coreceptor for several SIV strains (SIVMAC316, SIVMAC239, SIVMACL7E-FR and SIVSM62A), as well as a primary HIV-1 strain (92UG024-2).

**Cellular Location**

Cell membrane; Multi-pass membrane protein

**Tissue Location**

Prominently expressed in developing osseous and cartilaginous tissue. Also found in adult parathyroid glands. Expressed in cardiovascular system, brain, kidney, gastrointestinal tissues and myeloid tissues. Expressed in a broad array of tissues associated with hematopoietic and immune function including, spleen, thymus, appendix, lymph node, bone marrow and fetal liver. Among leukocyte populations abundant expression in monocyte-derived macrophage and immature dendritic cells (DCs). High expression in blood monocytes and low levels in polymorphonuclear cells and T-cells. Expressed on endothelial cells. Highly expressed in differentiating adipocytes

## CMKLR1 Antibody (C-term) - Protocols

Provided below are standard protocols that you may find useful for product applications.

- [Western Blot](#)
- [Blocking Peptides](#)
- [Dot Blot](#)
- [Immunohistochemistry](#)
- [Immunofluorescence](#)
- [Immunoprecipitation](#)
- [Flow Cytometry](#)
- [Cell Culture](#)