

**FXR1 Antibody (N-term)**  
**Affinity Purified Rabbit Polyclonal Antibody (Pab)**  
**Catalog # AP20184a**

**Specification**

**FXR1 Antibody (N-term) - Product Information**

Application	<b>WB,E</b>
Primary Accession	<a href="#">P51114</a>
Other Accession	<a href="#">Q5XI81</a> , <a href="#">Q61584</a> , <a href="#">O70523</a> , <a href="#">Q2TBT7</a> , <a href="#">NP_005078.2</a>
Reactivity Predicted	<b>Mouse</b> <b>Bovine, Hamster,</b> <b>Rat</b>
Host	<b>Rabbit</b>
Clonality	<b>Polyclonal</b>
Isotype	<b>Rabbit Ig</b>
Calculated MW	<b>69721</b>
Antigen Region	<b>37-66</b>

**FXR1 Antibody (N-term) - Additional Information**

**Gene ID 8087**

**Other Names**

Fragile X mental retardation  
syndrome-related protein 1, hFXR1p, FXR1

**Target/Specificity**

This FXR1 antibody is generated from rabbits immunized with a KLH conjugated synthetic peptide between 37-66 amino acids from the N-terminal region of human FXR1.

**Dilution**

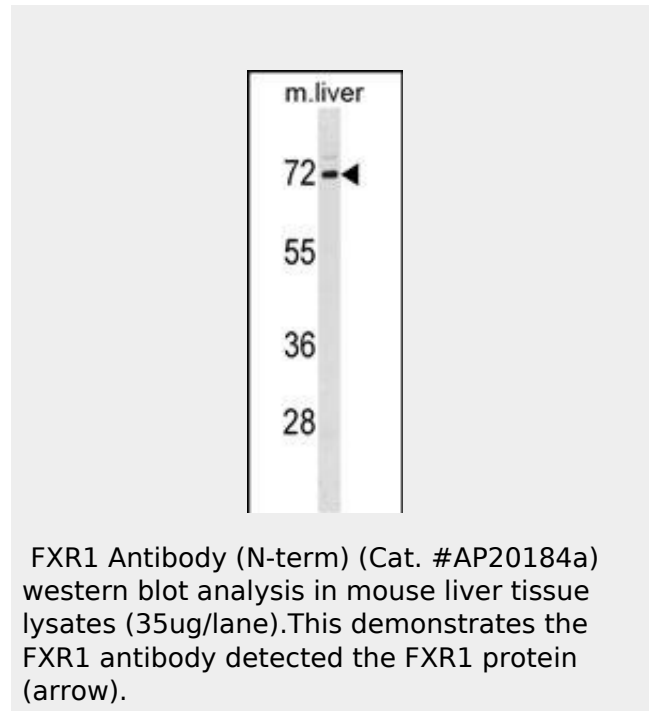
WB~~1:1000

**Format**

Purified polyclonal antibody supplied in PBS with 0.09% (W/V) sodium azide. This antibody is purified through a protein A column, followed by peptide affinity purification.

**Storage**

Maintain refrigerated at 2-8°C for up to 2 weeks. For long term storage store at -20°C in small aliquots to prevent freeze-thaw cycles.



FXR1 Antibody (N-term) (Cat. #AP20184a) western blot analysis in mouse liver tissue lysates (35ug/lane). This demonstrates the FXR1 antibody detected the FXR1 protein (arrow).

**FXR1 Antibody (N-term) - Background**

The protein encoded by this gene is an RNA binding protein that interacts with the functionally-similar proteins FMR1 and FXR2. These proteins shuttle between the nucleus and cytoplasm and associate with polyribosomes, predominantly with the 60S ribosomal subunit. Three transcript variants encoding different isoforms have been found for this gene.

**FXR1 Antibody (N-term) - References**

Coffee, R.L. Jr., et al. *Dis Model Mech* 3 (7-8), 471-485 (2010) :  
Darnell, J.C., et al. *Hum. Mol. Genet.* 18(17):3164-3177(2009)  
Purcell, S.M., et al. *Nature* 460(7256):748-752(2009)  
Davidovic, L., et al. *J. Med. Genet.* 45(10):679-685(2008)  
Vasudevan, S., et al. *Cell*

**Precautions**

FXR1 Antibody (N-term) is for research use only and not for use in diagnostic or therapeutic procedures.

128(6):1105-1118(2007)

**FXR1 Antibody (N-term) - Protein Information****Name** FXR1**Function**

RNA-binding protein required for embryonic and postnatal development of muscle tissue (PubMed:<a href="http://www.uniprot.org/citations/30770808" target="\_blank">30770808</a>). May regulate intracellular transport and local translation of certain mRNAs (By similarity).

**Cellular Location**

Cytoplasm, cytosol. Note=Adjacent to Z-lines in muscles  
{ECO:0000250|UniProtKB:Q61584}

**Tissue Location**

Expressed in all tissues examined including heart, brain, kidney and testis.

**FXR1 Antibody (N-term) - Protocols**

Provided below are standard protocols that you may find useful for product applications.

- [Western Blot](#)
- [Blocking Peptides](#)
- [Dot Blot](#)
- [Immunohistochemistry](#)
- [Immunofluorescence](#)
- [Immunoprecipitation](#)
- [Flow Cytometry](#)
- [Cell Culture](#)