

**SEC11A Antibody (Center)**  
**Affinity Purified Rabbit Polyclonal Antibody (Pab)**  
**Catalog # AP20099c**

**Specification**

**SEC11A Antibody (Center) - Product Information**

Application	<b>WB,E</b>
Primary Accession	<a href="#">P67812</a>
Other Accession	<a href="#">P0C7V7</a> , <a href="#">P42667</a> , <a href="#">Q9ROP6</a> , <a href="#">P67810</a> , <a href="#">NP_055115.1</a>
Reactivity Predicted	<b>Human</b> <b>Bovine, Mouse,</b> <b>Rat</b>
Host	<b>Rabbit</b>
Clonality	<b>Polyclonal</b>
Isotype	<b>Rabbit Ig</b>
Antigen Region	<b>95-123</b>

**SEC11A Antibody (Center) - Additional Information**

**Gene ID** 23478

**Other Names**

Signal peptidase complex catalytic subunit SEC11A, Endopeptidase SP18, Microsomal signal peptidase 18 kDa subunit, SPase 18 kDa subunit, SEC11 homolog A, SEC11-like protein 1, SPC18, SEC11A, SEC11L1, SPC18, SPCS4A

**Target/Specificity**

This SC11A antibody is generated from rabbits immunized with a KLH conjugated synthetic peptide between 95-123 amino acids from the Central region of human SC11A.

**Dilution**

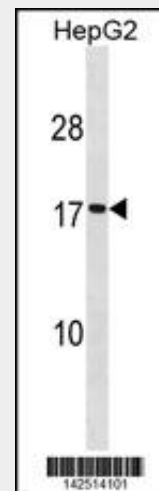
WB~~1:1000

**Format**

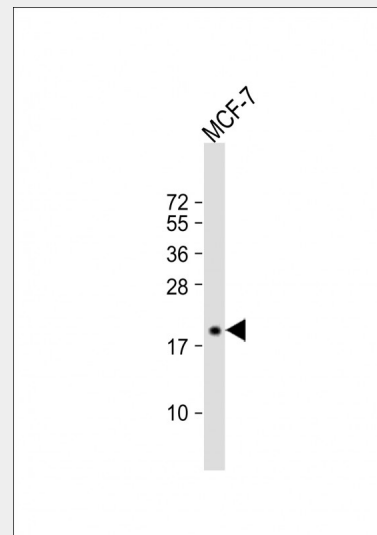
Purified polyclonal antibody supplied in PBS with 0.09% (W/V) sodium azide. This antibody is purified through a protein A column, followed by peptide affinity purification.

**Storage**

Maintain refrigerated at 2-8°C for up to 2



SEC11A Antibody (Center) (Cat. #AP20099c) western blot analysis in HepG2 cell line lysates (35ug/lane). This demonstrates the SEC11A antibody detected the SEC11A protein (arrow).



Anti-SEC11A Antibody (Center) at 1:1000 dilution + MCF-7 whole cell lysate  
Lysates/proteins at 20 µg per lane.  
Secondary Goat Anti-Rabbit IgG, (H+L), Peroxidase conjugated at 1/10000 dilution.  
Predicted band size : 21 kDa  
Blocking/Dilution buffer: 5% NFDM/TBST.

weeks. For long term storage store at -20°C in small aliquots to prevent freeze-thaw cycles.

**Precautions**

SEC11A Antibody (Center) is for research use only and not for use in diagnostic or therapeutic procedures.

**SEC11A Antibody (Center) - Protein Information**

**Name** SEC11A

**Synonyms** SEC11L1, SPC18, SPCS4A

**Function**

Component of the microsomal signal peptidase complex which removes signal peptides from nascent proteins as they are translocated into the lumen of the endoplasmic reticulum.

**Cellular Location**

Microsome membrane; Single-pass type II membrane protein. Endoplasmic reticulum membrane; Single-pass type II membrane protein

**SEC11A Antibody (Center) - Protocols**

Provided below are standard protocols that you may find useful for product applications.

- [Western Blot](#)
- [Blocking Peptides](#)
- [Dot Blot](#)
- [Immunohistochemistry](#)
- [Immunofluorescence](#)
- [Immunoprecipitation](#)
- [Flow Cytometry](#)
- [Cell Culture](#)

**SEC11A Antibody (Center) - Background**

Component of the microsomal signal peptidase complex which removes signal peptides from nascent proteins as they are translocated into the lumen of the endoplasmic reticulum (By similarity).

**SEC11A Antibody (Center) - References**

Ewing, R.M., et al. Mol. Syst. Biol. 3, 89 (2007)  
:  
Dodson, G., et al. Curr. Opin. Struct. Biol. 8(2):189-194(1998)