

PRRX2 Antibody (C-term)
Affinity Purified Rabbit Polyclonal Antibody (Pab)
Catalog # AP19763b

Specification

PRRX2 Antibody (C-term) - Product Information

Application	WB,E
Primary Accession	Q99811
Other Accession	Q06348 , NP_057391.1
Reactivity	Mouse
Host	Rabbit
Clonality	Polyclonal
Isotype	Rabbit Ig
Calculated MW	27079
Antigen Region	223-250

PRRX2 Antibody (C-term) - Additional Information

Gene ID 51450

Other Names

Paired mesoderm homeobox protein 2,
Paired-related homeobox protein 2, PRX-2,
PRRX2, PMX2, PRX2

Target/Specificity

This PRRX2 antibody is generated from rabbits immunized with a KLH conjugated synthetic peptide between 223-250 amino acids from the C-terminal region of human PRRX2.

Dilution

WB~~1:1000

Format

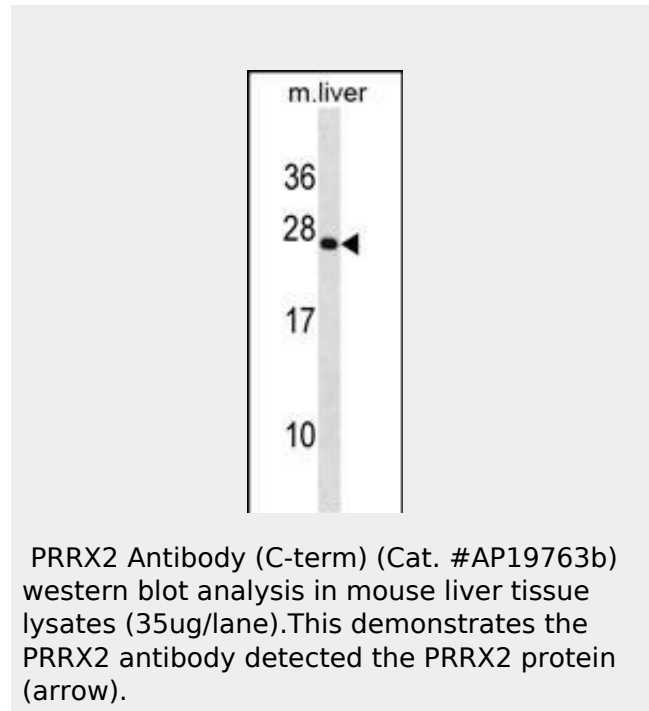
Purified polyclonal antibody supplied in PBS with 0.09% (W/V) sodium azide. This antibody is purified through a protein A column, followed by peptide affinity purification.

Storage

Maintain refrigerated at 2-8°C for up to 2 weeks. For long term storage store at -20°C in small aliquots to prevent freeze-thaw cycles.

Precautions

PRRX2 Antibody (C-term) is for research use



PRRX2 Antibody (C-term) - Background

The DNA-associated protein encoded by this gene is a member of the paired family of homeobox proteins. Expression is localized to proliferating fetal fibroblasts and the developing dermal layer, with downregulated expression in adult skin. Increases in expression of this gene during fetal but not adult wound healing suggest a possible role in mechanisms that control mammalian dermal regeneration and prevent formation of scar response to wounding. The expression patterns provide evidence consistent with a role in fetal skin development and a possible role in cellular proliferation.

PRRX2 Antibody (C-term) - References

Jugessur, A., et al. PLoS ONE 5 (7), E11493

only and not for use in diagnostic or therapeutic procedures.

PRRX2 Antibody (C-term) - Protein Information

Name PRRX2

Synonyms PMX2, PRX2

Function

May play a role in the scarless healing of cutaneous wounds during the first two trimesters of development.

Cellular Location

Nucleus

{ECO:0000255|PROSITE-ProRule:PRU00108,
ECO:0000255|PROSITE-ProRule:PRU00138}

Tissue Location

In fetal skin, highest expression found in cells of mesodermal origin within the dermal papilla of the developing hair shaft. Not detected in epidermis or dermis. In adult skin, weakly expressed within the basal layers of the epidermis. Not expressed in dermis.

(2010) :

Eriksson, N., et al. PLoS Genet. 6 (6), E1000993

(2010) :

Tokutomi, Y., et al. Biochem. Biophys. Res. Commun. 364(4):822-830(2007)

Wissmuller, S., et al. Nucleic Acids Res. 34(6):1735-1744(2006)

Gervais, C., et al. Leukemia 19(1):145-148(2005)

PRRX2 Antibody (C-term) - Protocols

Provided below are standard protocols that you may find useful for product applications.

- [Western Blot](#)
- [Blocking Peptides](#)
- [Dot Blot](#)
- [Immunohistochemistry](#)
- [Immunofluorescence](#)
- [Immunoprecipitation](#)
- [Flow Cytometry](#)
- [Cell Culture](#)