

ARMCX6 Antibody(N-term)
Affinity Purified Rabbit Polyclonal Antibody (Pab)
Catalog # AP19653a

Specification

ARMCX6 Antibody(N-term) - Product Information

Application	WB,E
Primary Accession	O7L4S7
Other Accession	NP_061880.2
Reactivity	Human
Host	Rabbit
Clonality	Polyclonal
Isotype	Rabbit Ig
Calculated MW	33019
Antigen Region	10-39

ARMCX6 Antibody(N-term) - Additional Information

Gene ID 54470

Other Names

Protein ARMCX6, ARMCX6

Target/Specificity

This ARMCX6 antibody is generated from rabbits immunized with a KLH conjugated synthetic peptide between 10-39 amino acids from the N-terminal region of human ARMCX6.

Dilution

WB~~1:1000

Format

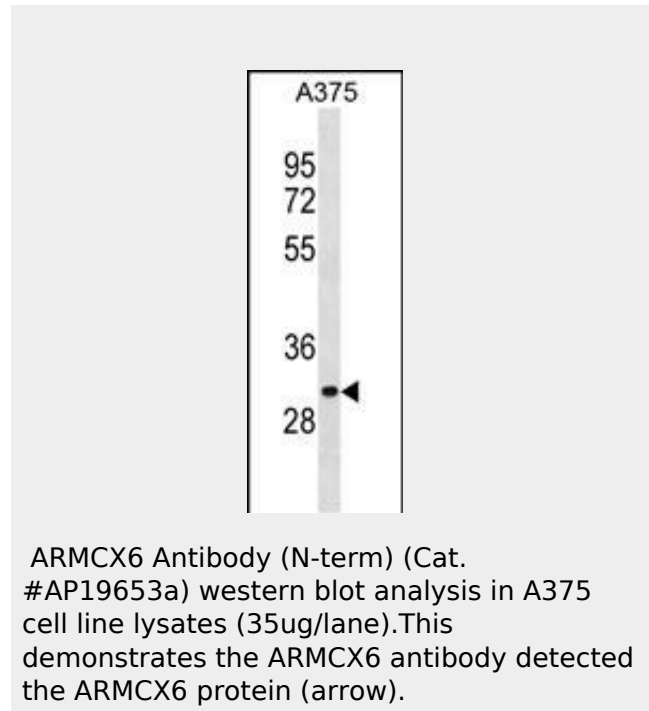
Purified polyclonal antibody supplied in PBS with 0.09% (W/V) sodium azide. This antibody is purified through a protein A column, followed by peptide affinity purification.

Storage

Maintain refrigerated at 2-8°C for up to 2 weeks. For long term storage store at -20°C in small aliquots to prevent freeze-thaw cycles.

Precautions

ARMCX6 Antibody(N-term) is for research use only and not for use in diagnostic or therapeutic procedures.



ARMCX6 Antibody(N-term) - Background

The function of this protein remains unknown.

ARMCX6 Antibody(N-term) - References

- Lamesch, P., et al. Genomics 89(3):307-315(2007)
- Olsen, J.V., et al. Cell 127(3):635-648(2006)
- Ross, M.T., et al. Nature 434(7031):325-337(2005)

ARMCX6 Antibody(N-term) - Protein Information

Name ARMCX6

Function

May regulate the dynamics and distribution of mitochondria in neural cells.

Cellular Location

Mitochondrion

{ECO:0000250|UniProtKB:Q8K3A6}.

Mitochondrion outer membrane

{ECO:0000250|UniProtKB:Q8BHS6}; Single-pass membrane protein

ARMCX6 Antibody(N-term) - Protocols

Provided below are standard protocols that you may find useful for product applications.

- [Western Blot](#)
- [Blocking Peptides](#)
- [Dot Blot](#)
- [Immunohistochemistry](#)
- [Immunofluorescence](#)
- [Immunoprecipitation](#)
- [Flow Cytometry](#)
- [Cell Culture](#)