

CLIC6 Antibody(C-term)
Affinity Purified Rabbit Polyclonal Antibody (Pab)
Catalog # AP19553b

Specification

CLIC6 Antibody(C-term) - Product Information

Application	WB,E
Primary Accession	Q96NY7
Other Accession	Q9N2G5 , NP_444507.1
Reactivity	Human
Predicted	Rabbit
Host	Rabbit
Clonality	Polyclonal
Isotype	Rabbit Ig
Calculated MW	73012
Antigen Region	676-704

CLIC6 Antibody(C-term) - Additional Information

Gene ID 54102

Other Names

Chloride intracellular channel protein 6,
Parchorin, CLIC6, CLIC1L

Target/Specificity

This CLIC6 antibody is generated from rabbits immunized with a KLH conjugated synthetic peptide between 676-704 amino acids from the C-terminal region of human CLIC6.

Dilution

WB~~1:1000

Format

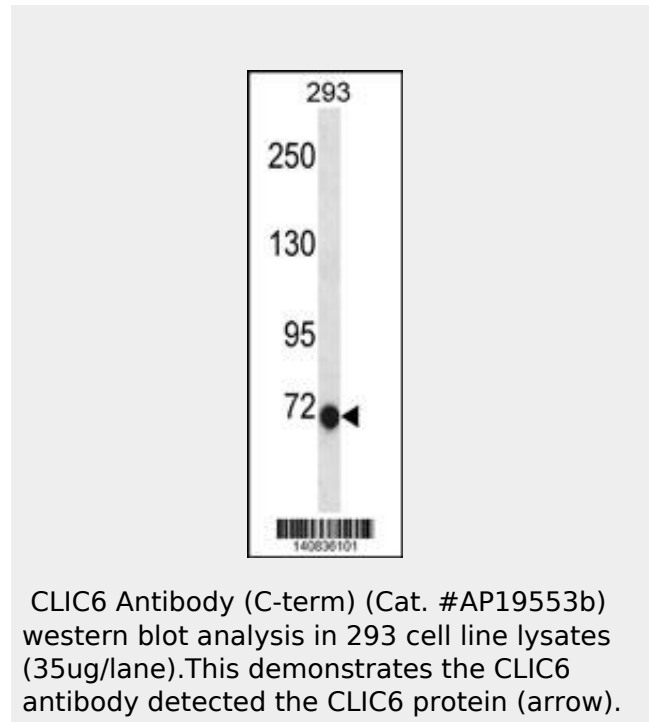
Purified polyclonal antibody supplied in PBS with 0.09% (W/V) sodium azide. This antibody is purified through a protein A column, followed by peptide affinity purification.

Storage

Maintain refrigerated at 2-8°C for up to 2 weeks. For long term storage store at -20°C in small aliquots to prevent freeze-thaw cycles.

Precautions

CLIC6 Antibody(C-term) is for research use



CLIC6 Antibody(C-term) - Background

This gene encodes a member of the chloride intracellular channel family of proteins. The gene is part of a large triplicated region found on chromosomes 1, 6, and 21. An alternatively spliced transcript variant has been described, but its biological validity has not been determined.

CLIC6 Antibody(C-term) - References

- Wheeler, H.E., et al. PLoS Genet. 5 (10), E1000685 (2009) :
Friedli, M., et al. Gene 320, 31-40 (2003) :
Strippoli, P., et al. Mamm. Genome 13(8):456-462(2002)
Scanlan, M.J., et al. Cancer Immun. 1, 4 (2001) :
:

only and not for use in diagnostic or therapeutic procedures.

CLIC6 Antibody(C-term) - Protein Information

Name CLIC6

Synonyms CLIC1L

Function

May insert into membranes and form chloride ion channels. May play a critical role in water-secreting cells, possibly through the regulation of chloride ion transport (By similarity).

Cellular Location

Cytoplasm. Cell membrane; Single-pass membrane protein Note=Predominantly cytoplasmic. Upon chloride ion efflux from the cell, it is translocated to the plasma membrane (By similarity)

Tissue Location

Expressed in brain, placenta, pancreas and liver.

CLIC6 Antibody(C-term) - Protocols

Provided below are standard protocols that you may find useful for product applications.

- [Western Blot](#)
- [Blocking Peptides](#)
- [Dot Blot](#)
- [Immunohistochemistry](#)
- [Immunofluorescence](#)
- [Immunoprecipitation](#)
- [Flow Cytometry](#)
- [Cell Culture](#)