

NMD3 Antibody (C-term)

Purified Rabbit Polyclonal Antibody (Pab)
Catalog # AP1948b

Specification

NMD3 Antibody (C-term) - Product Information

Application	WB,E
Primary Accession	Q96D46
Reactivity	Human, Mouse
Host	Rabbit
Clonality	Polyclonal
Isotype	Rabbit Ig
Calculated MW	57603
Antigen Region	410-440

NMD3 Antibody (C-term) - Additional Information

Gene ID 51068

Other Names

60S ribosomal export protein NMD3,
hNMD3, NMD3

Target/Specificity

This NMD3 antibody is generated from rabbits immunized with a KLH conjugated synthetic peptide between 410-440 amino acids from the C-terminal region of human NMD3.

Dilution

WB ~ ~ 1:1000

Format

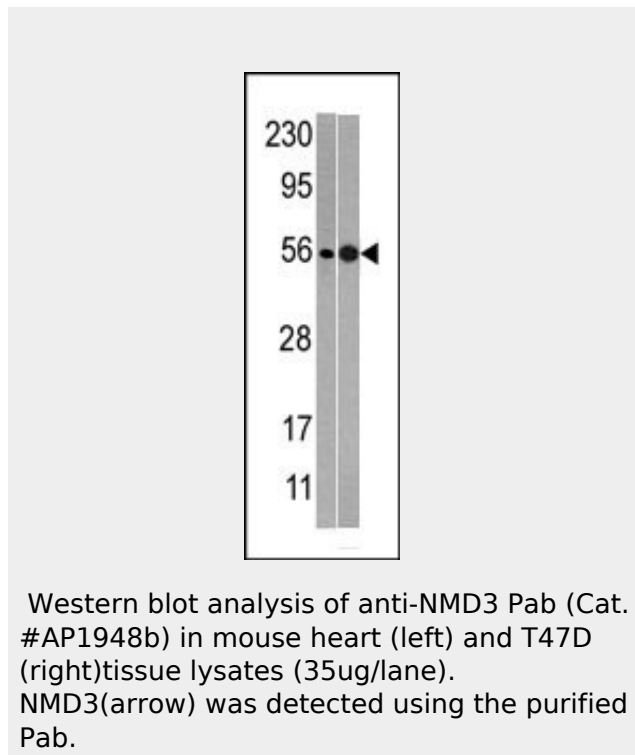
Purified polyclonal antibody supplied in PBS with 0.09% (W/V) sodium azide. This antibody is prepared by Saturated Ammonium Sulfate (SAS) precipitation followed by dialysis against PBS.

Storage

Maintain refrigerated at 2-8°C for up to 2 weeks. For long term storage store at -20°C in small aliquots to prevent freeze-thaw cycles.

Precautions

NMD3 Antibody (C-term) is for research use only and not for use in diagnostic or therapeutic procedures.



NMD3 Antibody (C-term) - Background

It has been suggested that NMD3 is a cytoplasmic factor required for a late cytoplasmic assembly step of the 60S subunit but is not a ribosomal protein. A mutation in NMD3 was found to be lethal in the absence of XRN1, which encodes the major cytoplasmic exoribonuclease responsible for mRNA turnover. The NMD3 protein sequence does not contain readily recognizable motifs of known function. However, NMD3 orthologues display an amino-terminal domain containing four repeats of Cx2C, reminiscent of zinc-binding proteins, implicated in nucleic acid binding or protein oligomerization.

NMD3 Antibody (C-term) - References

Trotta, C.R., et al., EMBO J. 22(11):2841-2851 (2003).
Ho, J.H. et al., Mol. Cell. Bio., 19(3):2389-2399 (1999).

NMD3 Antibody (C-term) - Protein Information

Name NMD3

Function

Acts as an adapter for the XPO1/CRM1-mediated export of the 60S ribosomal subunit.

Cellular Location

Cytoplasm. Nucleus. Note=Shuttles between the nucleus/nucleolus and the cytoplasm in a XPO1/CRM1-dependent manner

NMD3 Antibody (C-term) - Protocols

Provided below are standard protocols that you may find useful for product applications.

- [Western Blot](#)
- [Blocking Peptides](#)
- [Dot Blot](#)
- [Immunohistochemistry](#)
- [Immunofluorescence](#)
- [Immunoprecipitation](#)
- [Flow Cytometry](#)
- [Cell Culture](#)