

SMYD5 Antibody(C-term)
Affinity Purified Rabbit Polyclonal Antibody (Pab)
Catalog # AP19403b

Specification

SMYD5 Antibody(C-term) - Product Information

Application	WB,E
Primary Accession	O6GMV2
Other Accession	Q3TYX3 , NP_006053.2
Reactivity	Human
Predicted	Mouse
Host	Rabbit
Clonality	Polyclonal
Isotype	Rabbit Ig
Calculated MW	47341
Antigen Region	343-371

SMYD5 Antibody(C-term) - Additional Information

Gene ID 10322

Other Names

SET and MYND domain-containing protein 5, 211-, Protein NN8-4AG, Retinoic acid-induced protein 15, SMYD5, RAI15

Target/Specificity

This SMYD5 antibody is generated from rabbits immunized with a KLH conjugated synthetic peptide between 343-371 amino acids from the C-terminal region of human SMYD5.

Dilution

WB~~1:1000

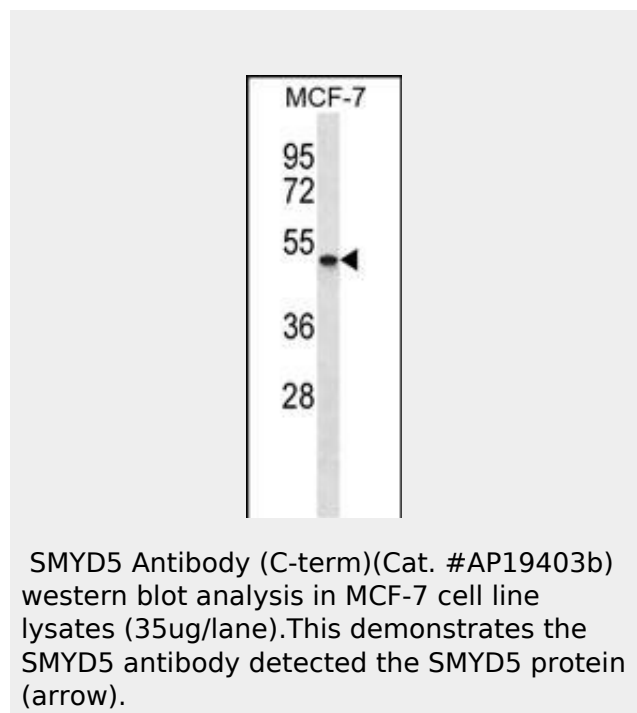
Format

Purified polyclonal antibody supplied in PBS with 0.09% (W/V) sodium azide. This antibody is purified through a protein A column, followed by peptide affinity purification.

Storage

Maintain refrigerated at 2-8°C for up to 2 weeks. For long term storage store at -20°C in small aliquots to prevent freeze-thaw cycles.

Precautions



SMYD5 Antibody(C-term) - Background

SMYD5 contains 1 MYND-type zinc finger and 1 SET domain. The exact function of SMYD5 remains unknown.

SMYD5 Antibody(C-term) - References

Shago, M., et al. Mol. Cell. Biol. 16(8):4337-4348(1996)

SMYD5 Antibody(C-term) is for research use only and not for use in diagnostic or therapeutic procedures.

SMYD5 Antibody(C-term) - Protein Information

Name SMYD5

Synonyms RAI15

SMYD5 Antibody(C-term) - Protocols

Provided below are standard protocols that you may find useful for product applications.

- [Western Blot](#)
- [Blocking Peptides](#)
- [Dot Blot](#)
- [Immunohistochemistry](#)
- [Immunofluorescence](#)
- [Immunoprecipitation](#)
- [Flow Cytometry](#)
- [Cell Culture](#)