

**SF3B4 Antibody(Center)**  
**Affinity Purified Rabbit Polyclonal Antibody (Pab)**  
Catalog # AP19396c

## Specification

### SF3B4 Antibody(Center) - Product Information

Application	WB,E
Primary Accession	<a href="#">Q15427</a>
Other Accession	<a href="#">Q6AYL5</a> , <a href="#">Q8QZY9</a> , <a href="#">NP_005841.1</a>
Reactivity	Human
Predicted	Mouse, Rat
Host	Rabbit
Clonality	Polyclonal
Isotype	Rabbit Ig
Calculated MW	44386
Antigen Region	158-187

### SF3B4 Antibody(Center) - Additional Information

**Gene ID** 10262

#### Other Names

Splicing factor 3B subunit 4,  
Pre-mRNA-splicing factor SF3b 49 kDa  
subunit, SF3b50, Spliceosome-associated  
protein 49, SAP 49, SF3B4, SAP49

#### Target/Specificity

This SF3B4 antibody is generated from rabbits immunized with a KLH conjugated synthetic peptide between 158-187 amino acids from the Central region of human SF3B4.

#### Dilution

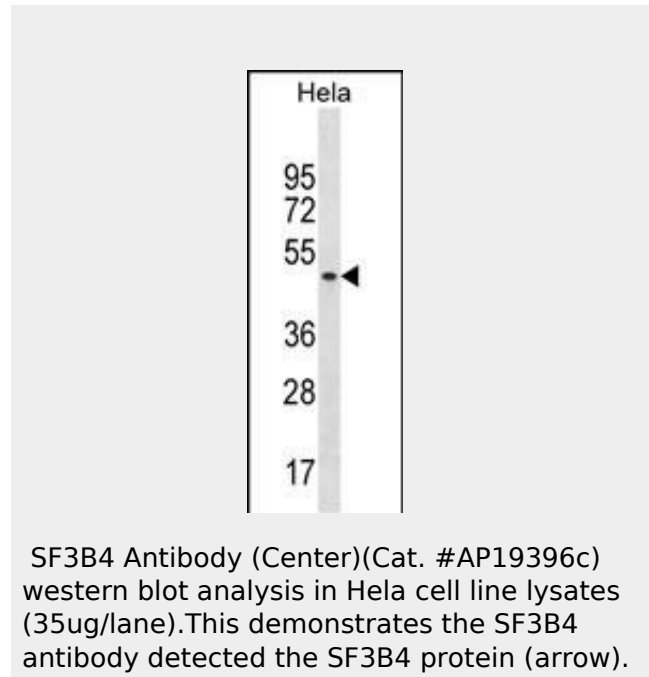
WB~~1:1000

#### Format

Purified polyclonal antibody supplied in PBS with 0.09% (W/V) sodium azide. This antibody is purified through a protein A column, followed by peptide affinity purification.

#### Storage

Maintain refrigerated at 2-8°C for up to 2 weeks. For long term storage store at -20°C in small aliquots to prevent freeze-thaw cycles.



### SF3B4 Antibody(Center) - Background

This gene encodes one of four subunits of the splicing factor 3B. The protein encoded by this gene cross-links to a region in the pre-mRNA immediately upstream of the branchpoint sequence in pre-mRNA in the prespliceosomal complex A. It also may be involved in the assembly of the B, C and E spliceosomal complexes. In addition to RNA-binding activity, this protein interacts directly and highly specifically with subunit 2 of the splicing factor 3B. This protein contains two N-terminal RNA-recognition motifs (RRMs), consistent with the observation that it binds directly to pre-mRNA.

### SF3B4 Antibody(Center) - References

- Gudbjartsson, D.F., et al. Nat. Genet. 40(5):609-615(2008)  
Rikova, K., et al. Cell 131(6):1190-1203(2007)

**Precautions**

SF3B4 Antibody(Center) is for research use only and not for use in diagnostic or therapeutic procedures.

Watanabe, H., et al. J. Biol. Chem. 282(28):20728-20738(2007)

Wu, C., et al. Proteomics 7(11):1775-1785(2007)

Ewing, R.M., et al. Mol. Syst. Biol. 3, 89 (2007) :

**SF3B4 Antibody(Center) - Protein Information**

**Name** SF3B4

**Synonyms** SAP49

**Function**

Involved in pre-mRNA splicing as a component of the splicing factor SF3B complex (PubMed:<a href="http://www.uniprot.org/citations/27720643" target="\_blank">27720643</a>). SF3B complex is required for 'A' complex assembly formed by the stable binding of U2 snRNP to the branchpoint sequence (BPS) in pre-mRNA. Sequence independent binding of SF3A/SF3B complex upstream of the branch site is essential, it may anchor U2 snRNP to the pre-mRNA (PubMed:<a href="http://www.uniprot.org/citations/12234937" target="\_blank">12234937</a>). May also be involved in the assembly of the 'E' complex. SF3B4 has been found in complex 'B' and 'C' as well (PubMed:<a href="http://www.uniprot.org/citations/10882114" target="\_blank">10882114</a>). Belongs also to the minor U12- dependent spliceosome, which is involved in the splicing of rare class of nuclear pre-mRNA intron (PubMed:<a href="http://www.uniprot.org/citations/15146077" target="\_blank">15146077</a>).

**Cellular Location**

Nucleus

**SF3B4 Antibody(Center) - Protocols**

Provided below are standard protocols that you may find useful for product applications.

- [Western Blot](#)
- [Blocking Peptides](#)
- [Dot Blot](#)
- [Immunohistochemistry](#)
- [Immunofluorescence](#)
- [Immunoprecipitation](#)
- [Flow Cytometry](#)

- [Cell Culture](#)