

**Mouse Khdrbs1 Antibody (C-term)**  
**Affinity Purified Rabbit Polyclonal Antibody (Pab)**  
**Catalog # AP19343b**

**Specification**

**Mouse Khdrbs1 Antibody (C-term) - Product Information**

Application	WB,E
Primary Accession	<a href="#">Q60749</a>
Other Accession	<a href="#">Q91V33</a> , <a href="#">Q07666</a> , <a href="#">Q8UUW7</a> , <a href="#">NP_035447.3</a>
Reactivity Predicted	Mouse Chicken, Human, Rat
Host	Rabbit
Clonality	Polyclonal
Isotype	Rabbit Ig
Antigen Region	414-443

**Mouse Khdrbs1 Antibody (C-term) - Additional Information**

**Gene ID** 20218

**Other Names**

KH domain-containing, RNA-binding, signal transduction-associated protein 1, GAP-associated tyrosine phosphoprotein p62, Src-associated in mitosis 68 kDa protein, Sam68, p21 Ras GTPase-activating protein-associated p62, p68, Khdrbs1 {ECO:0000312|MGI:MGI:893579}

**Target/Specificity**

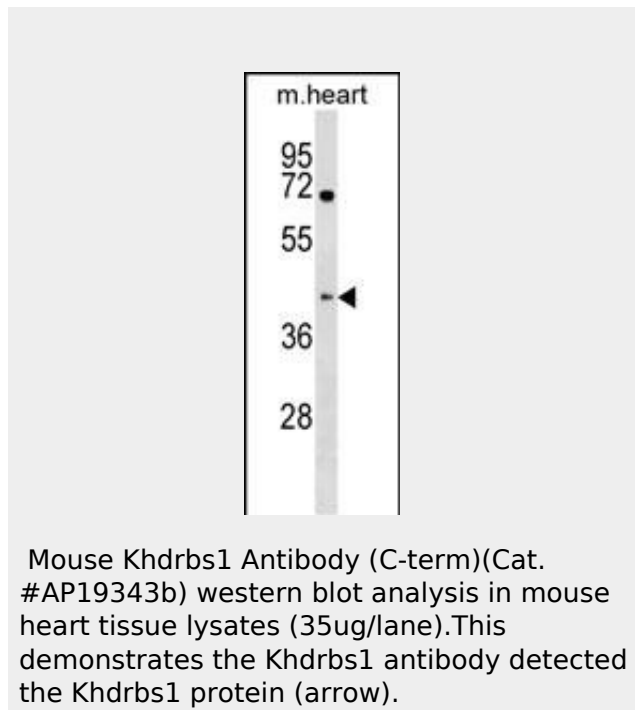
This Mouse Khdrbs1 antibody is generated from rabbits immunized with a KLH conjugated synthetic peptide between 414-443 amino acids from the C-terminal region of mouse Khdrbs1.

**Dilution**

WB~~1:1000

**Format**

Purified polyclonal antibody supplied in PBS with 0.09% (W/V) sodium azide. This antibody is purified through a protein A column, followed by peptide affinity purification.



Mouse Khdrbs1 Antibody (C-term)(Cat. #AP19343b) western blot analysis in mouse heart tissue lysates (35ug/lane).This demonstrates the Khdrbs1 antibody detected the Khdrbs1 protein (arrow).

**Mouse Khdrbs1 Antibody (C-term) - Background**

Recruited and tyrosine phosphorylated by several receptor systems, for example the T-cell, leptin and insulin receptors. Once phosphorylated, functions as an adapter protein in signal transduction cascades by binding to SH2 and SH3 domain-containing proteins. Role in G2-M progression in the cell cycle. Represses CBP-dependent transcriptional activation apparently by competing with other nuclear factors for binding to CBP. Also acts as a putative regulator of mRNA stability and/or translation rates and mediates mRNA nuclear export.

**Mouse Khdrbs1 Antibody (C-term) - References**

Sette, C., et al. J. Androl. 31(1):66-74(2010)  
Maroni, P., et al. Mol. Cell. Endocrinol. 309 (1-2), 26-31 (2009) ;  
Paronetto, M.P., et al. J. Cell Biol. 185(2):235-249(2009)

**Storage**

Maintain refrigerated at 2-8°C for up to 2 weeks. For long term storage store at -20°C in small aliquots to prevent freeze-thaw cycles.

**Precautions**

Mouse Khdrbs1 Antibody (C-term) is for research use only and not for use in diagnostic or therapeutic procedures.

Huot, M.E., et al. Mol. Cell. Biol. 29(7):1933-1943(2009)

Rajan, P., et al. BMC Cell Biol. 10, 82 (2009) :

**Mouse Khdrbs1 Antibody (C-term) - Protein Information****Name** Khdrbs1

{ECO:0000312|MGI:MGI:893579}

**Function**

Recruited and tyrosine phosphorylated by several receptor systems, for example the T-cell, leptin and insulin receptors. Once phosphorylated, functions as an adapter protein in signal transduction cascades by binding to SH2 and SH3 domain-containing proteins. Role in G2-M progression in the cell cycle. Represses CBP-dependent transcriptional activation apparently by competing with other nuclear factors for binding to CBP. Also acts as a putative regulator of mRNA stability and/or translation rates and mediates mRNA nuclear export. Positively regulates the association of constitutive transport element (CTE)-containing mRNA with large polyribosomes and translation initiation. May not be involved in the nucleocytoplasmic export of unspliced (CTE)-containing RNA species. RNA-binding protein that plays a role in the regulation of alternative splicing and influences mRNA splice site selection and exon inclusion. Binds to RNA containing 5'- [AU]UAA-3' as a bipartite motif spaced by more than 15 nucleotides. Binds poly(A). In cooperation with HNRNPA1 modulates alternative splicing of BCL2L1 by promoting splicing toward isoform Bcl-X(S), and of SMN1 (By similarity). Can regulate CD44 alternative splicing in a Ras pathway-dependent manner. Can regulate alternative splicing of NRXN1 and NRXN3 in the laminin G-like domain 6 containing the evolutionary conserved neurexin alternative spliced segment 4 (AS4) involved in neurexin selective targeting to postsynaptic partners. In a neuronal activity-dependent manner

cooperates synergistically with KHDRBS2/SLIM-1 in regulation of NRXN1 exon skipping at AS4. The cooperation with KHDRBS2/SLIM-1 is antagonistic for regulation of NRXN3 alternative splicing at AS4 (PubMed:<a href="http://www.uniprot.org/citations/12478298" target="\_blank">12478298</a>, PubMed:<a href="http://www.uniprot.org/citations/22196734" target="\_blank">22196734</a>, PubMed:<a href="http://www.uniprot.org/citations/24469635" target="\_blank">24469635</a>).

#### Cellular Location

Nucleus. Cytoplasm  
{ECO:0000250|UniProtKB:Q07666}.  
Membrane Note=Predominantly located in the nucleus but also located partially in the cytoplasm.  
{ECO:0000250|UniProtKB:Q07666}

#### Tissue Location

In adult cerebellum expressed in most neuronal cell populations, specifically in cerebellar granule cells of the internal granular layer, ROR(alpha)-positive Purkinje cells, internal granular layer and molecular layer interneurons (at protein level)

#### Mouse Khdrbs1 Antibody (C-term) - Protocols

Provided below are standard protocols that you may find useful for product applications.

- [Western Blot](#)
- [Blocking Peptides](#)
- [Dot Blot](#)
- [Immunohistochemistry](#)
- [Immunofluorescence](#)
- [Immunoprecipitation](#)
- [Flow Cytometry](#)
- [Cell Culture](#)

#### Mouse Khdrbs1 Antibody (C-term) - Citations

- [Utility of SAM68 in the progression and prognosis for bladder cancer.](#)