

BEST3 Antibody (N-term)
Affinity Purified Rabbit Polyclonal Antibody (Pab)
Catalog # AP19190a

Specification

BEST3 Antibody (N-term) - Product Information

Application	WB,E
Primary Accession	Q8N1M1
Other Accession	NP_116124.2
Reactivity	Human
Host	Rabbit
Clonality	Polyclonal
Isotype	Rabbit Ig
Calculated MW	76107
Antigen Region	40-68

BEST3 Antibody (N-term) - Additional Information

Gene ID 144453

Other Names

Bestrophin-3, Vitelliform macular dystrophy 2-like protein 3, BEST3, VMD2L3

Target/Specificity

This BEST3 antibody is generated from rabbits immunized with a KLH conjugated synthetic peptide between 40-68 amino acids from the N-terminal region of human BEST3.

Dilution

WB~~1:1000

Format

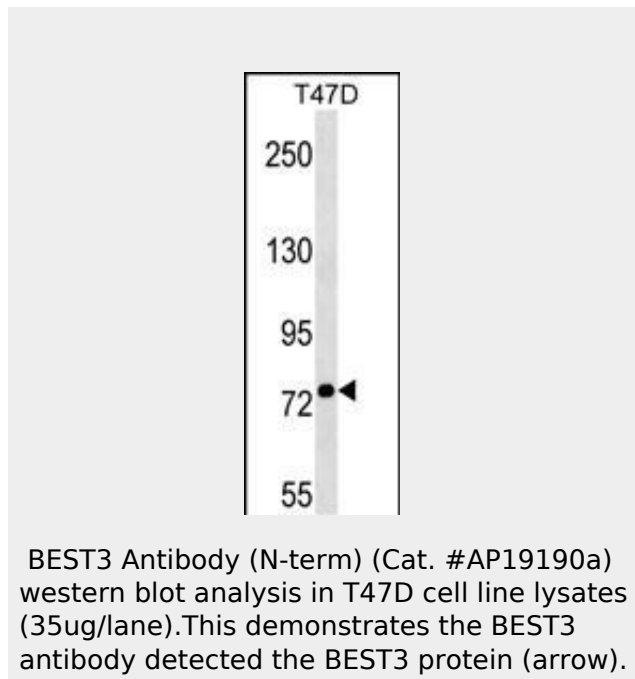
Purified polyclonal antibody supplied in PBS with 0.09% (W/V) sodium azide. This antibody is purified through a protein A column, followed by peptide affinity purification.

Storage

Maintain refrigerated at 2-8°C for up to 2 weeks. For long term storage store at -20°C in small aliquots to prevent freeze-thaw cycles.

Precautions

BEST3 Antibody (N-term) is for research use only and not for use in diagnostic or therapeutic procedures.



BEST3 Antibody (N-term) - Background

BEST3 belongs to the bestrophin family of anion channels, which includes BEST1 (MIM 607854), the gene mutant in vitelliform macular dystrophy (VMD; MIM 153700), and 2 other BEST1-like genes, BEST2 (MIM 607335) and BEST4 (MIM 607336). Bestrophins are transmembrane (TM) proteins that share a homology region containing a high content of aromatic residues, including an invariant arg-phe-pro (RFP) motif. The bestrophin genes share a conserved gene structure, with almost identical sizes of the 8 RFP-TM domain-encoding exons and highly conserved exon-intron boundaries. Each of the 4 bestrophin genes has a unique 3-prime end of variable length (Stohr et al., 2002 [PubMed 12032738]; Tsunenari et al., 2003 [PubMed 12907679]).

BEST3 Antibody (N-term) - Protein Information**Name** BEST3**Synonyms** VMD2L3**Function**Forms calcium-sensitive chloride channels.
Permeable to bicarbonate.**Cellular Location**

Cell membrane; Multi-pass membrane protein.

Tissue Location

Present in skeletal muscle and weakly in brain, spinal cord, bone marrow and retina.

BEST3 Antibody (N-term) - References

Marsey, L.L., et al. J. Physiol. (Lond.) 587 (PT 10), 2211-2224 (2009) :
Qu, Z.Q., et al. J. Biol. Chem. 282(24):17460-17467(2007)
Tsunenari, T., et al. J. Biol. Chem. 278(42):41114-41125(2003)
Stohr, H., et al. Eur. J. Hum. Genet. 10(4):281-284(2002)
Marquardt, A., et al. Hum. Mol. Genet. 7(9):1517-1525(1998)

BEST3 Antibody (N-term) - Protocols

Provided below are standard protocols that you may find useful for product applications.

- [Western Blot](#)
- [Blocking Peptides](#)
- [Dot Blot](#)
- [Immunohistochemistry](#)
- [Immunofluorescence](#)
- [Immunoprecipitation](#)
- [Flow Cytometry](#)
- [Cell Culture](#)