

**TRMU Antibody (Center)**  
**Affinity Purified Rabbit Polyclonal Antibody (Pab)**  
**Catalog # AP19094C**

**Specification**

**TRMU Antibody (Center) - Product Information**

Application	WB,E
Primary Accession	<a href="#">O75648</a>
Other Accession	<a href="#">NP_060476.2</a>
Reactivity	Human
Host	Rabbit
Clonality	Polyclonal
Isotype	Rabbit Ig
Calculated MW	47745
Antigen Region	128-154

**TRMU Antibody (Center) - Additional Information**

**Gene ID** 55687

**Other Names**

Mitochondrial tRNA-specific 2-thiouridylase 1, 281-, MTO2 homolog, TRMU, MTU1, TRMT1

**Target/Specificity**

This TRMU antibody is generated from rabbits immunized with a KLH conjugated synthetic peptide between 128-154 amino acids from the Central region of human TRMU.

**Dilution**

WB~~1:1000

**Format**

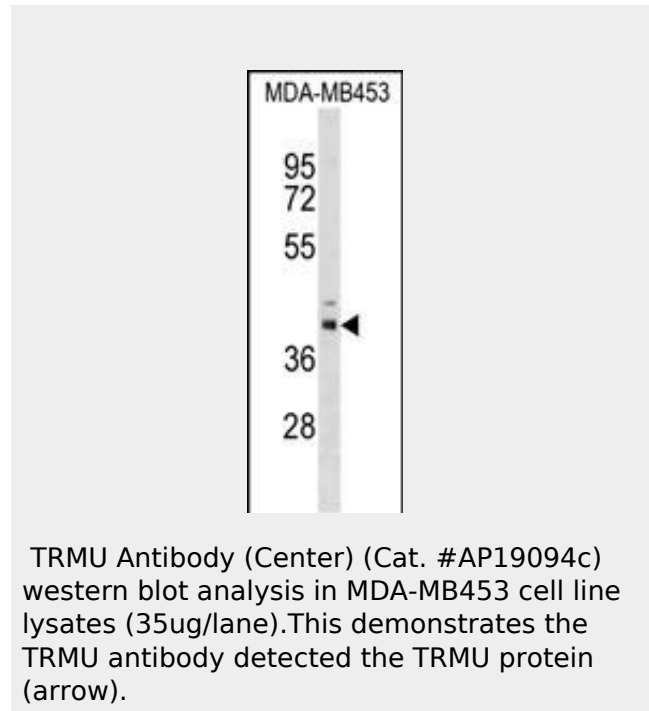
Purified polyclonal antibody supplied in PBS with 0.09% (W/V) sodium azide. This antibody is purified through a protein A column, followed by peptide affinity purification.

**Storage**

Maintain refrigerated at 2-8°C for up to 2 weeks. For long term storage store at -20°C in small aliquots to prevent freeze-thaw cycles.

**Precautions**

TRMU Antibody (Center) is for research use only and not for use in diagnostic or



**TRMU Antibody (Center) - Background**

This gene is a member of the trmU family. It encodes a mitochondria-specific tRNA-modifying enzyme that is required for the 2-thio modification of 5-taurinomethyl-2-thiouridine tRNA-Lys on the wobble position of the anticodon.

**TRMU Antibody (Center) - References**

- Zeharia, A., et al. Am. J. Hum. Genet. 85(3):401-407(2009)
- Reiling, E., et al. Eur. J. Hum. Genet. 17(8):1056-1062(2009)
- de Moraes, V.C., et al. Biochem. Biophys. Res. Commun. 381(2):210-213(2009)
- Otaegui, D., et al. Audiol. Neurootol. 13(5):320-327(2008)
- Guan, M.X., et al. Am. J. Hum. Genet. 79(2):291-302(2006)

therapeutic procedures.

#### **TRMU Antibody (Center) - Protein Information**

**Name** TRMU

**Synonyms** MTU1, TRMT1

#### **Function**

Catalyzes the 2-thiolation of uridine at the wobble position (U34) of mitochondrial tRNA(Lys), tRNA(Glu) and tRNA(Gln).

Required for the formation of 5-taurinomethyl-2-thiouridine (tm5s2U) of mitochondrial tRNA(Lys), tRNA(Glu), and tRNA(Gln) at the wobble position. ATP is required to activate the C2 atom of the wobble base.

#### **Cellular Location**

Mitochondrion

#### **Tissue Location**

Ubiquitous. Abundantly expressed in tissues with high metabolic rates including heart, liver, kidney, and brain

#### **TRMU Antibody (Center) - Protocols**

Provided below are standard protocols that you may find useful for product applications.

- [Western Blot](#)
- [Blocking Peptides](#)
- [Dot Blot](#)
- [Immunohistochemistry](#)
- [Immunofluorescence](#)
- [Immunoprecipitation](#)
- [Flow Cytometry](#)
- [Cell Culture](#)