

**TMPO Antibody (Center)**  
**Affinity Purified Rabbit Polyclonal Antibody (Pab)**  
**Catalog # AP19087C**

**Specification**

**TMPO Antibody (Center) - Product Information**

Application	<b>WB,E</b>
Primary Accession	<a href="#">P42167</a>
Other Accession	<a href="#">NP_001027454.1</a>
Reactivity	<b>Human</b>
Host	<b>Rabbit</b>
Clonality	<b>Polyclonal</b>
Isotype	<b>Rabbit Ig</b>
Calculated MW	<b>50670</b>
Antigen Region	<b>243-269</b>

**TMPO Antibody (Center) - Additional Information**

**Gene ID** 7112

**Other Names**

Lamina-associated polypeptide 2, isoforms beta/gamma, Thymopietin, isoforms beta/gamma, TP beta/gamma, Thymopietin-related peptide isoforms beta/gamma, TPRP isoforms beta/gamma, Thymopietin, TP, Splenin, Thymopentin, TP5, TMPO, LAP2

**Target/Specificity**

This TMPO antibody is generated from rabbits immunized with a KLH conjugated synthetic peptide between 243-269 amino acids from the Central region of human TMPO.

**Dilution**

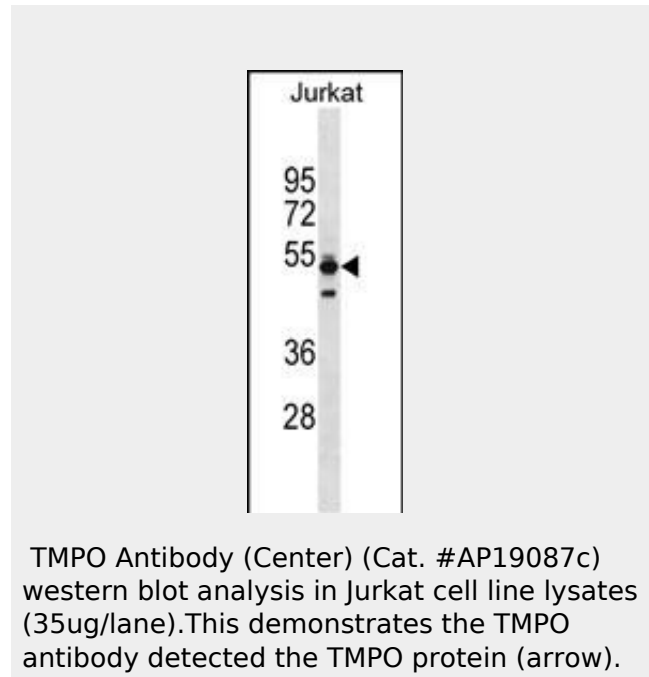
WB~~1:1000

**Format**

Purified polyclonal antibody supplied in PBS with 0.09% (W/V) sodium azide. This antibody is purified through a protein A column, followed by peptide affinity purification.

**Storage**

Maintain refrigerated at 2-8°C for up to 2 weeks. For long term storage store at -20°C in small aliquots to prevent freeze-thaw cycles.



**TMPO Antibody (Center) - Background**

The protein encoded by this gene resides in the nucleus and may play a role in the assembly of the nuclear lamina, and thus help maintain the structural organization of the nuclear envelope. It may function as a receptor for the attachment of lamin filaments to the inner nuclear membrane. Mutations in this gene are associated with dilated cardiomyopathy. Alternatively spliced transcript variants encoding different isoforms have been noted for this gene.

**TMPO Antibody (Center) - References**

- Bailey, S.D., et al. Diabetes Care 33(10):2250-2253(2010)
- Davila, S., et al. Genes Immun. 11(3):232-238(2010)
- Craig, D.W., et al. Diabet. Med. 26(11):1090-1098(2009)

**Precautions**

TMPO Antibody (Center) is for research use only and not for use in diagnostic or therapeutic procedures.

Talmud, P.J., et al. Am. J. Hum. Genet. 85(5):628-642(2009)  
Shaklai, S., et al. Eur. J. Cell Biol. 87(5):267-278(2008)

**TMPO Antibody (Center) - Protein Information**

**Name** TMPO

**Synonyms** LAP2

**Function**

May help direct the assembly of the nuclear lamina and thereby help maintain the structural organization of the nuclear envelope. Possible receptor for attachment of lamin filaments to the inner nuclear membrane. May be involved in the control of initiation of DNA replication through its interaction with NAKAP95.

**Cellular Location**

Nucleus inner membrane; Single-pass type II membrane protein. Note=Tightly associated with the nuclear lamina

**Tissue Location**

Expressed in many tissues. Most abundant in adult thymus and fetal liver

**TMPO Antibody (Center) - Protocols**

Provided below are standard protocols that you may find useful for product applications.

- [Western Blot](#)
- [Blocking Peptides](#)
- [Dot Blot](#)
- [Immunohistochemistry](#)
- [Immunofluorescence](#)
- [Immunoprecipitation](#)
- [Flow Cytometry](#)
- [Cell Culture](#)