

UBE2D4 Antibody (C-term)
Affinity Purified Rabbit Polyclonal Antibody (Pab)
Catalog # AP19059b

Specification

UBE2D4 Antibody (C-term) - Product Information

Application	WB,E
Primary Accession	Q9Y2X8
Other Accession	A5PKP9 , NP_057067.1
Reactivity	Human
Predicted	Xenopus
Host	Rabbit
Clonality	Polyclonal
Isotype	Rabbit Ig
Calculated MW	16649
Antigen Region	111-140

UBE2D4 Antibody (C-term) - Additional Information

Gene ID 51619

Other Names

Ubiquitin-conjugating enzyme E2 D4, HBUCE1, Ubiquitin carrier protein D4, Ubiquitin-protein ligase D4, UBE2D4, UBCH5D

Target/Specificity

This UBE2D4 antibody is generated from rabbits immunized with a KLH conjugated synthetic peptide between 111-140 amino acids from the C-terminal region of human UBE2D4.

Dilution

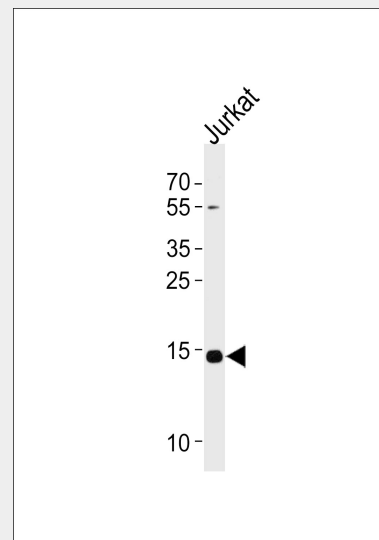
WB~~1:1000

Format

Purified polyclonal antibody supplied in PBS with 0.09% (W/V) sodium azide. This antibody is purified through a protein A column, followed by peptide affinity purification.

Storage

Maintain refrigerated at 2-8°C for up to 2 weeks. For long term storage store at -20°C in small aliquots to prevent freeze-thaw cycles.



Western blot analysis of lysate from Jurkat cell line, using UBE2D4 Antibody (C-term)(Cat. #AP19059b). AP19059b was diluted at 1:1000 at each lane. A goat anti-rabbit IgG H&L(HRP) at 1:5000 dilution was used as the secondary antibody. Lysate at 35ug per lane.

UBE2D4 Antibody (C-term) - Background

UBE2D4 accepts ubiquitin from the E1 complex and catalyzes its covalent attachment to other proteins. In vitro able to promote polyubiquitination using all 7 ubiquitin Lys residues, but may prefer 'Lys-11' and 'Lys-48'-linked polyubiquitination.

UBE2D4 Antibody (C-term) - References

- Markson, G., et al. Genome Res. 19(10):1905-1911(2009)
- van Wijk, S.J., et al. Mol. Syst. Biol. 5, 295 (2009) :
- Lamesch, P., et al. Genomics 89(3):307-315(2007)
- Colland, F., et al. Genome Res. 14(7):1324-1332(2004)

Precautions

UBE2D4 Antibody (C-term) is for research use only and not for use in diagnostic or therapeutic procedures.

UBE2D4 Antibody (C-term) - Protein Information

Name UBE2D4

Synonyms UBCH5D

Function

Accepts ubiquitin from the E1 complex and catalyzes its covalent attachment to other proteins. In vitro able to promote polyubiquitination using all 7 ubiquitin Lys residues, but may prefer 'Lys-11' and 'Lys-48'-linked polyubiquitination.

UBE2D4 Antibody (C-term) - Protocols

Provided below are standard protocols that you may find useful for product applications.

- [Western Blot](#)
- [Blocking Peptides](#)
- [Dot Blot](#)
- [Immunohistochemistry](#)
- [Immunofluorescence](#)
- [Immunoprecipitation](#)
- [Flow Cytometry](#)
- [Cell Culture](#)