

**SLCO1B3 Antibody (C-term)**  
**Affinity Purified Rabbit Polyclonal Antibody (Pab)**  
**Catalog # AP18964b**

**Specification**

**SLCO1B3 Antibody (C-term) - Product Information**

Application	<b>WB,E</b>
Primary Accession	<a href="#">Q9NPD5</a>
Other Accession	<a href="#">NP_062818.1</a>
Reactivity	<b>Human</b>
Host	<b>Rabbit</b>
Clonality	<b>Polyclonal</b>
Isotype	<b>Rabbit Ig</b>
Antigen Region	<b>639-668</b>

**SLCO1B3 Antibody (C-term) - Additional Information**

**Gene ID** 28234

**Other Names**

Solute carrier organic anion transporter family member 1B3, Liver-specific organic anion transporter 2, LST-2, Organic anion transporter 8, Organic anion-transporting polypeptide 8, OATP-8, Solute carrier family 21 member 8, SLCO1B3, LST2, OATP1B3, OATP8, SLC21A8

**Target/Specificity**

This SLCO1B3 antibody is generated from rabbits immunized with a KLH conjugated synthetic peptide between 639-668 amino acids from the C-terminal region of human SLCO1B3.

**Dilution**

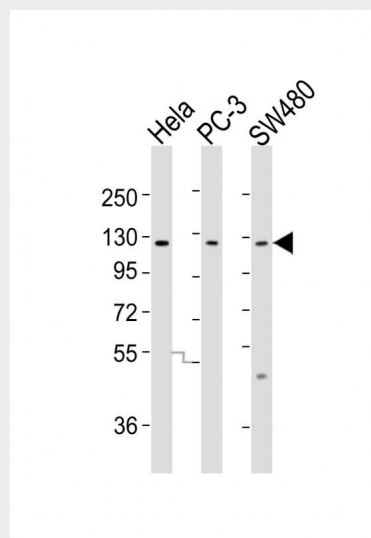
WB~~1:2000

**Format**

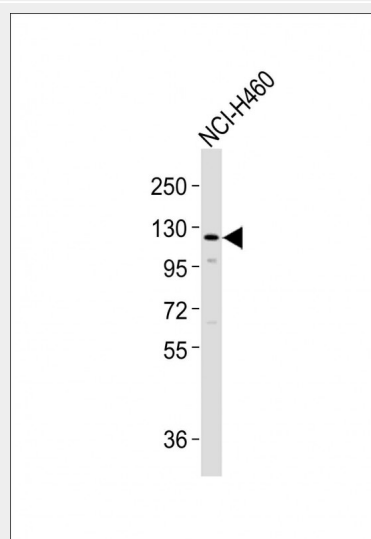
Purified polyclonal antibody supplied in PBS with 0.09% (W/V) sodium azide. This antibody is purified through a protein A column, followed by peptide affinity purification.

**Storage**

Maintain refrigerated at 2-8°C for up to 2 weeks. For long term storage store at -20°C in small aliquots to prevent freeze-thaw cycles.



All lanes : Anti-SLCO1B3 Antibody (C-term) at 1:2000 dilution Lane 1: HeLa whole cell lysates Lane 2: PC-3 whole cell lysates Lane 3: SW480 whole cell lysates Lysates/proteins at 20 µg per lane. Secondary Goat Anti-Rabbit IgG, (H+L), Peroxidase conjugated at 1/10000 dilution Predicted band size : 77 kDa Blocking/Dilution buffer: 5% NFD/MTBST.



Anti-SLCO1B3 Antibody (C-term) at 1:1000 dilution + NCI-H460 whole cell lysates

### Precautions

SLCO1B3 Antibody (C-term) is for research use only and not for use in diagnostic or therapeutic procedures.

### SLCO1B3 Antibody (C-term) - Protein Information

**Name** SLCO1B3

**Synonyms** LST2, OATP1B3, OATP8, SLC21A8

### Function

Mediates the Na(+)-independent uptake of organic anions such as 17-beta-glucuronosyl estradiol, taurocholate, triiodothyronine (T3), leukotriene C4, dehydroepiandrosterone sulfate (DHEAS), methotrexate and sulfobromophthalein (BSP). Involved in the clearance of bile acids and organic anions from the liver.

### Cellular Location

Basolateral cell membrane; Multi-pass membrane protein

### Tissue Location

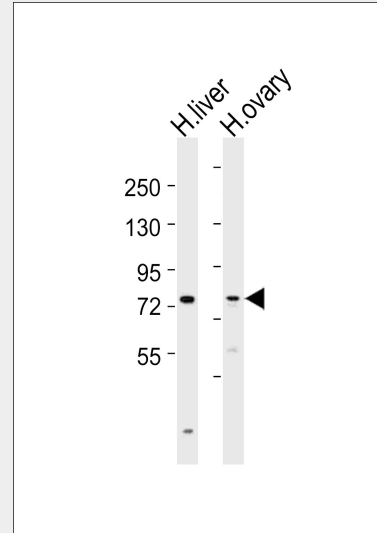
Highly expressed in liver, in particular at the basolateral membrane of hepatocytes near the central vein. Not detected in other tissues. Highly expressed in some cancer cell lines derived from colon, pancreas, liver and gall bladder

### SLCO1B3 Antibody (C-term) - Protocols

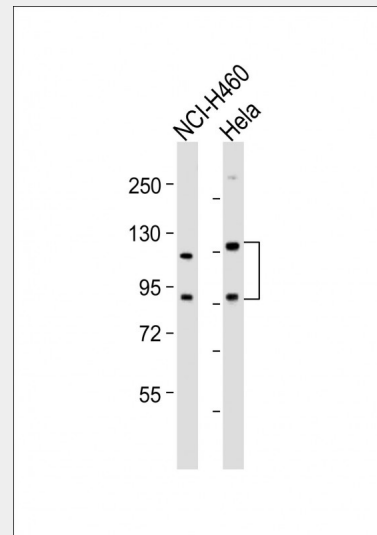
Provided below are standard protocols that you may find useful for product applications.

- [Western Blot](#)
- [Blocking Peptides](#)
- [Dot Blot](#)
- [Immunohistochemistry](#)
- [Immunofluorescence](#)
- [Immunoprecipitation](#)
- [Flow Cytometry](#)
- [Cell Culture](#)

Lysates/proteins at 20 µg per lane.  
Secondary Goat Anti-Rabbit IgG, (H+L), Peroxidase conjugated at 1/10000 dilution  
Predicted band size : 77 kDa  
Blocking/Dilution buffer: 5% NFD/MTBST.

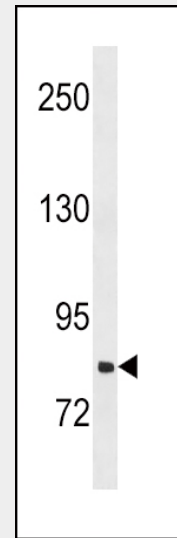


All lanes : Anti-SLCO1B3 Antibody (C-term) at 1:2000 dilution Lane 1: human liver lysates Lane 2: human ovary lysates Lysates/proteins at 20 µg per lane. Secondary Goat Anti-Rabbit IgG, (H+L), Peroxidase conjugated at 1/10000 dilution Predicted band size : 77 kDa Blocking/Dilution buffer: 5% NFD/MTBST.

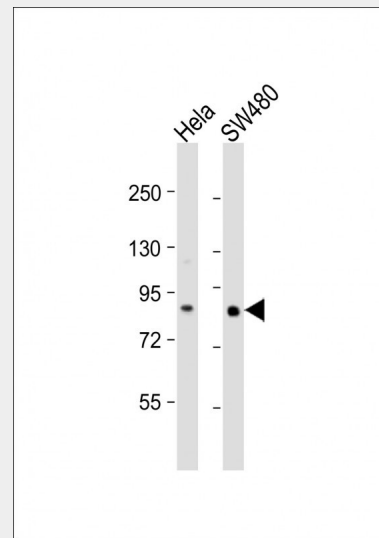


All lanes : Anti-SLCO1B3 Antibody (C-term) at 1:2000 dilution Lane 1: NCI-H460 whole cell lysate Lane 2: HeLa whole cell lysate Lysates/proteins at 20 µg per lane. Secondary Goat Anti-Rabbit IgG, (H+L), Peroxidase conjugated at 1/10000 dilution. Predicted band size : 77 kDa

Blocking/Dilution buffer: 5% NFDM/TBST.



SLCO1B3 Antibody (C-term) (Cat. #AP18964b) western blot analysis in NCI-H460 cell line lysates (35ug/lane). This demonstrates the SLCO1B3 antibody detected the SLCO1B3 protein (arrow).



All lanes : Anti-SLCO1B3 Antibody (C-term) at 1:2000 dilution  
 Lane 1: HeLa whole cell lysate  
 Lane 2: SW480 whole cell lysate  
 Lysates/proteins at 20 µg per lane.  
 Secondary Goat Anti-Rabbit IgG, (H+L), Peroxidase conjugated at 1/10000 dilution.  
 Predicted band size : 77 kDa  
 Blocking/Dilution buffer: 5% NFDM/TBST.

### SLCO1B3 Antibody (C-term) - Background

SLCO1B3 belongs to the organic anion transporter (OATP)

family. OATPs are involved in the membrane transport of bile acids, conjugated steroids, thyroid hormone, eicosanoids, peptides, and numerous drugs in many tissues (Mikkaichi et al., 2004 [PubMed 14993604]).

#### **SLCO1B3 Antibody (C-term) - References**

Hu, M., et al. Pharmacogenet. Genomics 20(10):634-637(2010)  
Weiner, M., et al. Antimicrob. Agents Chemother. 54(10):4192-4200(2010)  
Kang, T.W., et al. Hum. Mol. Genet. 19(18):3672-3678(2010)  
Takahashi, N., et al. J. Hum. Genet. (2010) In press :  
Justenhoven, C., et al. Breast Cancer Res. Treat. (2010) In press :