

PPIAL4A Antibody (Center)
Affinity Purified Rabbit Polyclonal Antibody (Pab)
Catalog # AP18860c

Specification

PPIAL4A Antibody (Center) - Product Information

Application	WB,E
Primary Accession	Q9Y536
Other Accession	A2BFH1 , F5H284 , NP_001129261.1
Reactivity	Human
Host	Rabbit
Clonality	Polyclonal
Isotype	Rabbit Ig
Calculated MW	18182
Antigen Region	66-92

PPIAL4A Antibody (Center) - Additional Information

Gene ID 653505

Other Names

Peptidyl-prolyl cis-trans isomerase A-like 4A/B/C, PPIase A-like 4A, Chromosome 1-amplified sequence 2, COAS-2, Cyclophilin homolog overexpressed in liver cancer, PPIAL4A, COAS2

Target/Specificity

This PPIAL4A antibody is generated from rabbits immunized with a KLH conjugated synthetic peptide between 66-92 amino acids from the Central region of human PPIAL4A.

Dilution

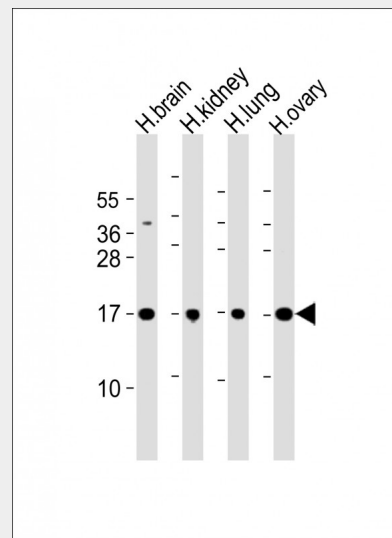
WB~~1:1000

Format

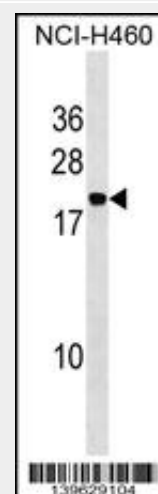
Purified polyclonal antibody supplied in PBS with 0.09% (W/V) sodium azide. This antibody is purified through a protein A column, followed by peptide affinity purification.

Storage

Maintain refrigerated at 2-8°C for up to 2 weeks. For long term storage store at -20°C in small aliquots to prevent freeze-thaw cycles.



All lanes : Anti-PPIAL4A Antibody (Center) at 1:2000 dilution
Lane 1: human brain lysate
Lane 2: human kidney lysate
Lane 3: human lung lysate
Lane 4: human ovary lysate
Lysates/proteins at 20 µg per lane.
Secondary Goat Anti-Rabbit IgG, (H+L), Peroxidase conjugated at 1/10000 dilution.
Predicted band size : 18 kDa
Blocking/Dilution buffer: 5% NFDM/TBST.



PPIAL4A Antibody (Center)(Cat. #AP18860c) western blot analysis in NCI-H460 cell line lysates (35ug/lane).This demonstrates the PPIAL4A antibody detected the PPIAL4A

Precautions

PPIAL4A Antibody (Center) is for research use only and not for use in diagnostic or therapeutic procedures.

PPIAL4A Antibody (Center) - Protein Information

Name PPIAL4A ([HGNC:24369](#))

Function

PPIases accelerate the folding of proteins. It catalyzes the cis-trans isomerization of proline imidic peptide bonds in oligopeptides (By similarity).

Cellular Location

Cytoplasm
{ECO:0000250|UniProtKB:P62937}.

Tissue Location

Highly expressed in brain, ovary and mammary gland. Moderately expressed in lung, salivary gland, kidney, skin, adipose tissue, intestine and spleen. Weakly expressed in skeletal muscle, liver and stomach. Expressed in pleiomorphic and undifferentiated liposarcomas, osteosarcomas and breast carcinomas

PPIAL4A Antibody (Center) - Protocols

Provided below are standard protocols that you may find useful for product applications.

- [Western Blot](#)
- [Blocking Peptides](#)
- [Dot Blot](#)
- [Immunohistochemistry](#)
- [Immunofluorescence](#)
- [Immunoprecipitation](#)
- [Flow Cytometry](#)
- [Cell Culture](#)

protein (arrow).

PPIAL4A Antibody (Center) - Background

PPIases accelerate the folding of proteins. It catalyzes the cis-trans isomerization of proline imidic peptide bonds in oligopeptides (By similarity).