

PGM3 Antibody (Center)
Affinity Purified Rabbit Polyclonal Antibody (Pab)
Catalog # AP18853C

Specification

PGM3 Antibody (Center) - Product Information

Application	WB,E
Primary Accession	O95394
Other Accession	NP_056414.1
Reactivity	Human
Host	Rabbit
Clonality	Polyclonal
Isotype	Rabbit Ig
Calculated MW	59852
Antigen Region	237-263

PGM3 Antibody (Center) - Additional Information

Gene ID 5238

Other Names

Phosphoacetylglucosamine mutase, PAGM, Acetylglucosamine phosphomutase, N-acetylglucosamine-phosphate mutase, Phosphoglucomutase-3 {ECO:0000312|HGNC:HGNC:8907}, PGM 3, PGM3 (http://www.genenames.org/cgi-bin/gene_symbol_report?hgnc_id=8907)

Target/Specificity

This PGM3 antibody is generated from rabbits immunized with a KLH conjugated synthetic peptide between 237-263 amino acids from the Central region of human PGM3.

Dilution

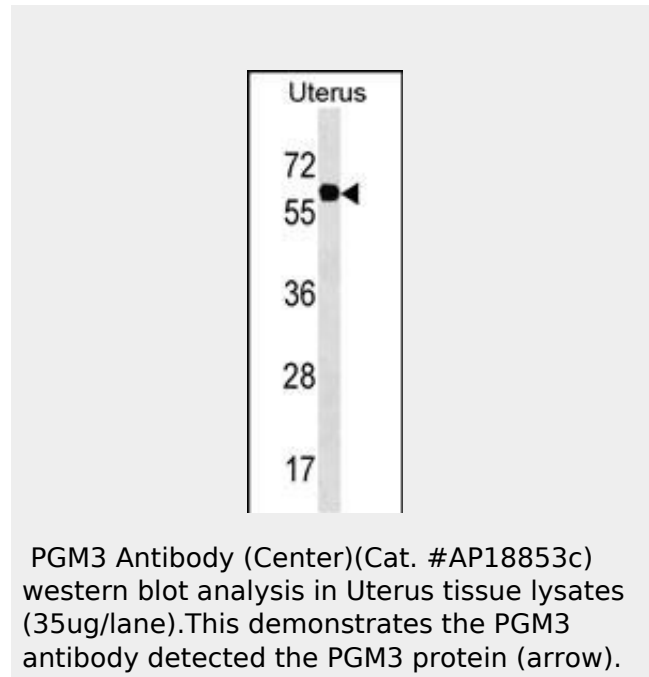
WB~1:1000

Format

Purified polyclonal antibody supplied in PBS with 0.09% (W/V) sodium azide. This antibody is purified through a protein A column, followed by peptide affinity purification.

Storage

Maintain refrigerated at 2-8°C for up to 2 weeks. For long term storage store at -20°C in small aliquots to prevent freeze-thaw



PGM3 Antibody (Center) - Background

PGM3 interconverts GlcNAc-6-P and GlcNAc-1-P.

PGM3 Antibody (Center) - References

Pang, H., et al. Biochem. Genet. 48 (3-4), 208-214 (2010) ; Sugiyama, N., et al. Mol. Cell Proteomics 6(6):1103-1109(2007) Mungall, A.J., et al. Nature 425(6960):805-811(2003) Pang, H., et al. Ann. Hum. Genet. 66 (PT 2), 139-144 (2002) ; Mio, T., et al. Biochim. Biophys. Acta 1492 (2-3), 369-376 (2000) ;

cycles.

Precautions

PGM3 Antibody (Center) is for research use only and not for use in diagnostic or therapeutic procedures.

PGM3 Antibody (Center) - Protein Information

Name PGM3 ([HGNC:8907](#))

Function

Catalyzes the conversion of GlcNAc-6-P into GlcNAc-1-P during the synthesis of uridine diphosphate/UDP-GlcNAc, a sugar nucleotide critical to multiple glycosylation pathways including protein N- and O-glycosylation.

Tissue Location

Found in many tissues except lung. Relatively high expression in pancreas, heart, liver, and placenta, and relatively low expression in brain, skeletal muscle and kidney

PGM3 Antibody (Center) - Protocols

Provided below are standard protocols that you may find useful for product applications.

- [Western Blot](#)
- [Blocking Peptides](#)
- [Dot Blot](#)
- [Immunohistochemistry](#)
- [Immunofluorescence](#)
- [Immunoprecipitation](#)
- [Flow Cytometry](#)
- [Cell Culture](#)