

**STX4 Antibody (Center)**  
**Affinity Purified Rabbit Polyclonal Antibody (Pab)**  
**Catalog # AP18817c**

**Specification**

**STX4 Antibody (Center) - Product Information**

Application	WB,E
Primary Accession	<a href="#">Q12846</a>
Other Accession	<a href="#">Q08850</a> , <a href="#">P70452</a> , <a href="#">Q3SWZ3</a> , <a href="#">NP_004595.2</a>
Reactivity Predicted	Human Bovine, Mouse, Rat
Host	Rabbit
Clonality	Polyclonal
Isotype	Rabbit Ig
Calculated MW	34180
Antigen Region	132-160

**STX4 Antibody (Center) - Additional Information**

**Gene ID** 6810

**Other Names**

Syntaxin-4, Renal carcinoma antigen  
NY-REN-31, STX4, STX4A

**Target/Specificity**

This STX4 antibody is generated from rabbits immunized with a KLH conjugated synthetic peptide between 132-160 amino acids from the Central region of human STX4.

**Dilution**

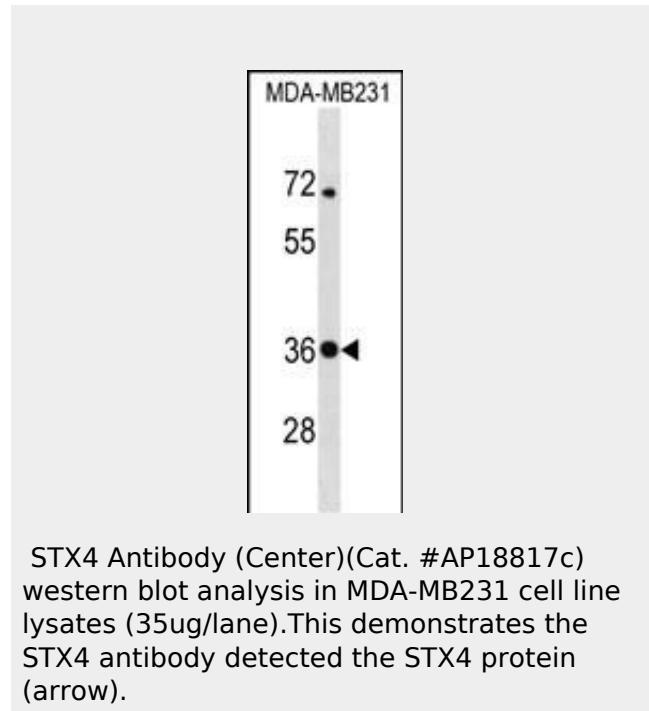
WB~~1:1000

**Format**

Purified polyclonal antibody supplied in PBS with 0.09% (W/V) sodium azide. This antibody is purified through a protein A column, followed by peptide affinity purification.

**Storage**

Maintain refrigerated at 2-8°C for up to 2 weeks. For long term storage store at -20°C in small aliquots to prevent freeze-thaw cycles.



**STX4 Antibody (Center) - Background**

Plasma membrane t-SNARE that mediates docking of transport vesicles. Necessary for the translocation of SLC2A4 from intracellular vesicles to the plasma membrane. Together with STXB3 and VAMP2, may also play a role in docking/fusion of intracellular GLUT4-containing vesicles with the cell surface in adipocytes (By similarity). May also play a role in docking of synaptic vesicles at presynaptic active zones.

**STX4 Antibody (Center) - References**

- Evesson, F.J., et al. J. Biol. Chem. 285(37):28529-28539(2010)
- Kennedy, M.J., et al. Cell 141(3):524-535(2010)
- Brochetta, C., et al. Biochim. Biophys. Acta 1783(10):1781-1791(2008)
- Cooper, G.M., et al. Blood 112(4):1022-1027(2008)
- Low, S.H., et al. Mol. Biol. Cell 17(2):977-989(2006)

**Precautions**

STX4 Antibody (Center) is for research use only and not for use in diagnostic or therapeutic procedures.

**STX4 Antibody (Center) - Protein Information**

**Name** STX4

**Synonyms** STX4A

**Function**

Plasma membrane t-SNARE that mediates docking of transport vesicles. Necessary for the translocation of SLC2A4 from intracellular vesicles to the plasma membrane. Together with STXB3 and VAMP2, may also play a role in docking/fusion of intracellular GLUT4-containing vesicles with the cell surface in adipocytes (By similarity). May also play a role in docking of synaptic vesicles at presynaptic active zones.

**Cellular Location**

Cell membrane; Single-pass type IV membrane protein

**Tissue Location**

Expressed in neutrophils and neutrophil-differentiated HL-60 cells. Expression in neutrophils increases with differentiation.

**STX4 Antibody (Center) - Protocols**

Provided below are standard protocols that you may find useful for product applications.

- [Western Blot](#)
- [Blocking Peptides](#)
- [Dot Blot](#)
- [Immunohistochemistry](#)
- [Immunofluorescence](#)
- [Immunoprecipitation](#)
- [Flow Cytometry](#)
- [Cell Culture](#)