

CEP170L Antibody (Center)
Affinity Purified Rabbit Polyclonal Antibody (Pab)
Catalog # AP18772c

Specification

CEP170L Antibody (Center) - Product Information

Application	WB,E
Primary Accession	Q96L14
Other Accession	Q5SW79
Reactivity	Human
Host	Rabbit
Clonality	Polyclonal
Isotype	Rabbit Ig
Calculated MW	32648
Antigen Region	140-167

CEP170L Antibody (Center) - Additional Information

Other Names

Cep170-like protein, CEP170 pseudogene 1, CEP170P1, CEP170L, KIAA0470L

Target/Specificity

This CEP170L antibody is generated from rabbits immunized with a KLH conjugated synthetic peptide between 140-167 amino acids from the Central region of human CEP170L.

Dilution

WB~~1:1000

Format

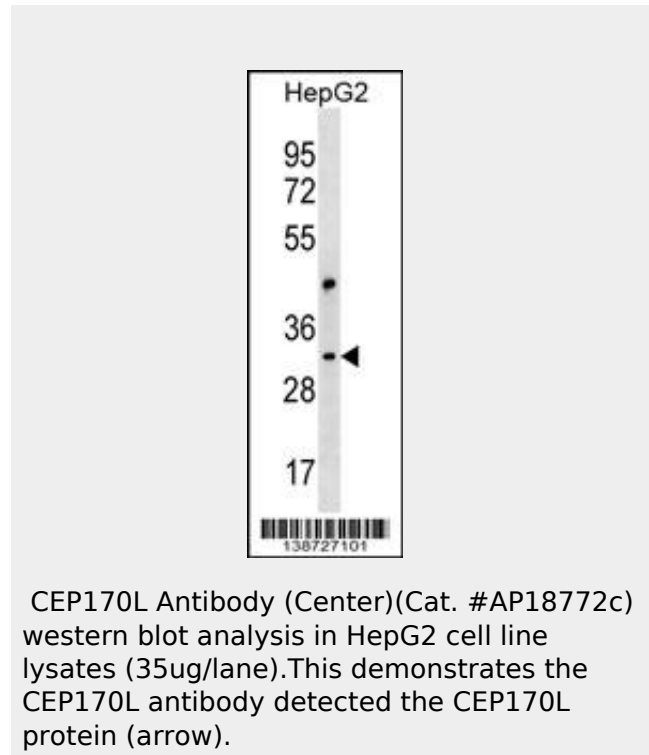
Purified polyclonal antibody supplied in PBS with 0.09% (W/V) sodium azide. This antibody is purified through a protein A column, followed by peptide affinity purification.

Storage

Maintain refrigerated at 2-8°C for up to 2 weeks. For long term storage store at -20°C in small aliquots to prevent freeze-thaw cycles.

Precautions

CEP170L Antibody (Center) is for research use only and not for use in diagnostic or therapeutic procedures.



CEP170L Antibody (Center)(Cat. #AP18772c) western blot analysis in HepG2 cell line lysates (35ug/lane).This demonstrates the CEP170L antibody detected the CEP170L protein (arrow).

CEP170L Antibody (Center) - Background

The function of this protein remains unknown.

CEP170L Antibody (Center) - Protein Information**Name** CEP170P1**Synonyms** CEP170L, KIAA0470L**CEP170L Antibody (Center) - Protocols**

Provided below are standard protocols that you may find useful for product applications.

- [Western Blot](#)
- [Blocking Peptides](#)
- [Dot Blot](#)
- [Immunohistochemistry](#)
- [Immunofluorescence](#)
- [Immunoprecipitation](#)
- [Flow Cytometry](#)
- [Cell Culture](#)