

CNPY3 Antibody (N-term)
Affinity Purified Rabbit Polyclonal Antibody (Pab)
Catalog # AP18622a**Specification****CNPY3 Antibody (N-term) - Product Information**

Application	WB,E
Primary Accession	Q9BT09
Other Accession	NP_006577.2
Reactivity	Human
Host	Rabbit
Clonality	Polyclonal
Isotype	Rabbit Ig
Calculated MW	30748
Antigen Region	66-92

CNPY3 Antibody (N-term) - Additional Information**Gene ID** 10695**Other Names**

Protein canopy homolog 3, CTG repeat protein 4a, Expanded repeat-domain protein CAG/CTG 5, Protein associated with TLR4, Trinucleotide repeat-containing gene 5 protein, CNPY3, CTG4A, ERDA5, PRAT4A, TNRC5

Target/Specificity

This CNPY3 antibody is generated from rabbits immunized with a KLH conjugated synthetic peptide between 66-92 amino acids from the N-terminal region of human CNPY3.

Dilution

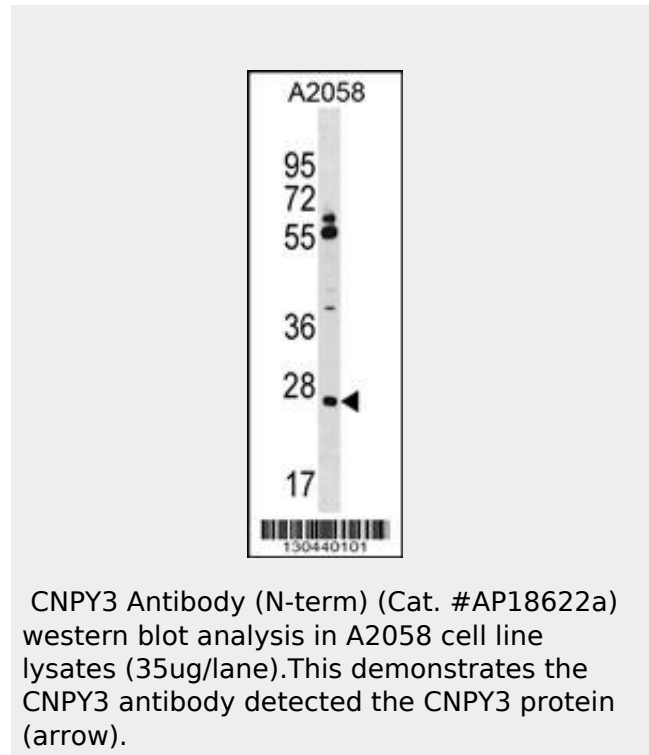
WB~~1:1000

Format

Purified polyclonal antibody supplied in PBS with 0.09% (W/V) sodium azide. This antibody is purified through a protein A column, followed by peptide affinity purification.

Storage

Maintain refrigerated at 2-8°C for up to 2 weeks. For long term storage store at -20°C in small aliquots to prevent freeze-thaw cycles.

**CNPY3 Antibody (N-term) - Background**

PRAT4A is associated with the immature form of TLR4 (MIM 603030) and regulates its cell surface expression (Wakabayashi et al., 2006 [PubMed 16849487]).

CNPY3 Antibody (N-term) - References

- Wakabayashi, Y., et al. J. Immunol. 177(3):1772-1779(2006)
- Clark, H.F., et al. Genome Res. 13(10):2265-2270(2003)
- Zhang, H., et al. Nat. Biotechnol. 21(6):660-666(2003)
- Zhang, H., et al. Nat. Biotechnol. 21(6):660-666(2003)
- Margolis, R.L., et al. Hum. Genet. 100(1):114-122(1997)

Precautions

CNPY3 Antibody (N-term) is for research use only and not for use in diagnostic or therapeutic procedures.

CNPY3 Antibody (N-term) - Protein Information

Name CNPY3

Synonyms CTG4A, ERDA5, PRAT4A, TNRC5

Function

Toll-like receptor (TLR)-specific co-chaperone for HSP90B1. Required for proper TLR folding, except that of TLR3, and hence controls TLR exit from the endoplasmic reticulum. Consequently, required for both innate and adaptive immune responses (By similarity).

Cellular Location

Endoplasmic reticulum.

CNPY3 Antibody (N-term) - Protocols

Provided below are standard protocols that you may find useful for product applications.

- [Western Blot](#)
- [Blocking Peptides](#)
- [Dot Blot](#)
- [Immunohistochemistry](#)
- [Immunofluorescence](#)
- [Immunoprecipitation](#)
- [Flow Cytometry](#)
- [Cell Culture](#)