

ESAM Antibody (C-term)
Affinity Purified Rabbit Polyclonal Antibody (Pab)
Catalog # AP18609b

Specification

ESAM Antibody (C-term) - Product Information

| | |
|-------------------|---|
| Application | WB,E |
| Primary Accession | Q96AP7 |
| Other Accession | Q95KI3 , NP_620411.2 |
| Reactivity | Human |
| Predicted | Monkey |
| Host | Rabbit |
| Clonality | Polyclonal |
| Isotype | Rabbit Ig |
| Calculated MW | 41176 |
| Antigen Region | 259-289 |

ESAM Antibody (C-term) - Additional Information

Gene ID 90952

Other Names

Endothelial cell-selective adhesion molecule, ESAM

Target/Specificity

This ESAM antibody is generated from rabbits immunized with a KLH conjugated synthetic peptide between 259-289 amino acids from the C-terminal region of human ESAM.

Dilution

WB~~1:1000

Format

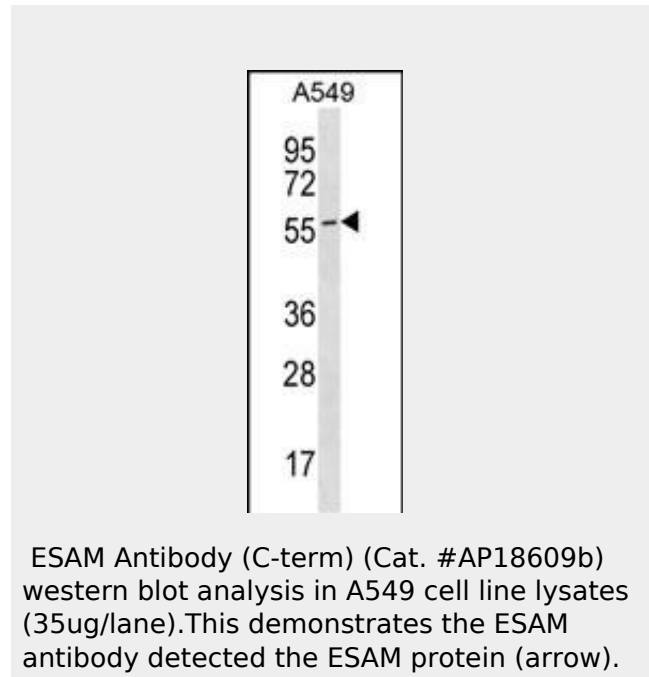
Purified polyclonal antibody supplied in PBS with 0.09% (W/V) sodium azide. This antibody is purified through a protein A column, followed by peptide affinity purification.

Storage

Maintain refrigerated at 2-8°C for up to 2 weeks. For long term storage store at -20°C in small aliquots to prevent freeze-thaw cycles.

Precautions

ESAM Antibody (C-term) is for research use



ESAM Antibody (C-term) - Background

ESAM can mediate aggregation most likely through a homophilic molecular interaction (By similarity).

ESAM Antibody (C-term) - References

- Rohatgi, A., et al. Arterioscler. Thromb. Vasc. Biol. 29(10):1684-1690(2009)
- Trynka, G., et al. Gut 58(8):1078-1083(2009)
- Zhang, Z., et al. Protein Sci. 13(10):2819-2824(2004)
- Clark, H.F., et al. Genome Res. 13(10):2265-2270(2003)
- Nasdala, I., et al. J. Biol. Chem. 277(18):16294-16303(2002)

only and not for use in diagnostic or therapeutic procedures.

ESAM Antibody (C-term) - Protein Information

Name ESAM

Function

Can mediate aggregation most likely through a homophilic molecular interaction.

Cellular Location

Cell junction, adherens junction. Cell junction, tight junction. Cell membrane; Single-pass type I membrane protein

Tissue Location

Highly expressed in endothelial cells.

ESAM Antibody (C-term) - Protocols

Provided below are standard protocols that you may find useful for product applications.

- [Western Blot](#)
- [Blocking Peptides](#)
- [Dot Blot](#)
- [Immunohistochemistry](#)
- [Immunofluorescence](#)
- [Immunoprecipitation](#)
- [Flow Cytometry](#)
- [Cell Culture](#)