

Mouse Kcnj11 Antibody (N-term)
Affinity Purified Rabbit Polyclonal Antibody (Pab)
Catalog # AP18601a

Specification

Mouse Kcnj11 Antibody (N-term) - Product Information

Application	WB,E
Primary Accession	Q61743
Other Accession	O02822 , Q14654 , NP_034732.1
Reactivity	Human, Mouse
Predicted	Rabbit
Host	Rabbit
Clonality	Polyclonal
Isotype	Rabbit Ig
Calculated MW	43562
Antigen Region	1-27

Mouse Kcnj11 Antibody (N-term) - Additional Information

Gene ID 16514

Other Names

ATP-sensitive inward rectifier potassium channel 11, Inward rectifier K(+) channel Kir62, Potassium channel, inwardly rectifying subfamily J member 11, Kcnj11

Target/Specificity

This Mouse Kcnj11 antibody is generated from rabbits immunized with a KLH conjugated synthetic peptide between 1-27 amino acids from the N-terminal region of mouse Kcnj11.

Dilution

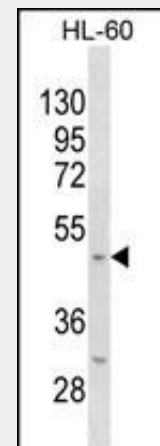
WB~~1:1000

Format

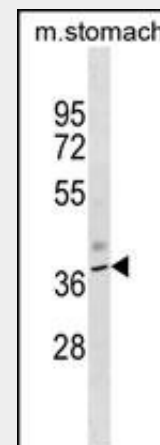
Purified polyclonal antibody supplied in PBS with 0.09% (W/V) sodium azide. This antibody is purified through a protein A column, followed by peptide affinity purification.

Storage

Maintain refrigerated at 2-8°C for up to 2 weeks. For long term storage store at -20°C in small aliquots to prevent freeze-thaw



Mouse Kcnj11 Antibody (N-term) (Cat. #AP18601a) western blot analysis in HL-60 cell line lysates (35ug/lane). This demonstrates the Mouse Kcnj11 antibody detected the Mouse Kcnj11 protein (arrow).



Mouse Kcnj11 Antibody (N-term) (Cat. #AP18601a) western blot analysis in mouse stomach tissue lysates (35ug/lane). This demonstrates the Mouse Kcnj11 antibody detected the Mouse Kcnj11 protein (arrow).

Mouse Kcnj11 Antibody (N-term) - Background

This receptor is controlled by G proteins. Inward rectifier potassium channels are

cycles.

Precautions

Mouse Kcnj11 Antibody (N-term) is for research use only and not for use in diagnostic or therapeutic procedures.

Mouse Kcnj11 Antibody (N-term) - Protein Information

Name Kcnj11

Function

This receptor is controlled by G proteins. Inward rectifier potassium channels are characterized by a greater tendency to allow potassium to flow into the cell rather than out of it. Their voltage dependence is regulated by the concentration of extracellular potassium; as external potassium is raised, the voltage range of the channel opening shifts to more positive voltages. The inward rectification is mainly due to the blockage of outward current by internal magnesium. Can be blocked by extracellular barium. Can form cardiac and smooth muscle-type KATP channels with ABCC9. KCNJ11 forms the channel pore while ABCC9 is required for activation and regulation (By similarity).

Cellular Location

Membrane; Multi-pass membrane protein.

characterized by a greater tendency to allow potassium to flow into the cell rather than out of it. Their voltage dependence is regulated by the concentration of extracellular potassium; as external potassium is raised, the voltage range of the channel opening shifts to more positive voltages. The inward rectification is mainly due to the blockage of outward current by internal magnesium. Can be blocked by extracellular barium (By similarity).

Mouse Kcnj11 Antibody (N-term) - References

Hugill, A., et al. Diabetologia 53(11):2352-2356(2010)
Li, J., et al. J. Biol. Chem. 285(37):28723-28730(2010)
Marhfour, I., et al. Cell Tissue Res. 340(2):335-346(2010)
Kurata, H.T., et al. PLoS Biol. 8 (2), E1000315 (2010) :
Alekseev, A.E., et al. Cell Metab. 11(1):58-69(2010)

Mouse Kcnj11 Antibody (N-term) - Protocols

Provided below are standard protocols that you may find useful for product applications.

- [Western Blot](#)
- [Blocking Peptides](#)
- [Dot Blot](#)
- [Immunohistochemistry](#)
- [Immunofluorescence](#)
- [Immunoprecipitation](#)
- [Flow Cytometry](#)
- [Cell Culture](#)