

GCNT2 Antibody (Center)
Affinity Purified Rabbit Polyclonal Antibody (Pab)
Catalog # AP18452c

Specification

GCNT2 Antibody (Center) - Product Information

Application	WB,E
Primary Accession	O8NOV5
Other Accession	NP_663624.1
Reactivity	Human
Host	Rabbit
Clonality	Polyclonal
Isotype	Rabbit Ig
Calculated MW	45873
Antigen Region	213-240

GCNT2 Antibody (Center) - Additional Information

Gene ID 2651

Other Names

N-acetyllactosaminide beta-1,
6-N-acetylglucosaminyl-transferase, isoform
A, N-acetylglucosaminyltransferase,
I-branching enzyme, IGNT, GCNT2, GCNT5,
II, NACGT1

Target/Specificity

This GCNT2 antibody is generated from rabbits immunized with a KLH conjugated synthetic peptide between 213-240 amino acids from the Central region of human GCNT2.

Dilution

WB~~1:1000

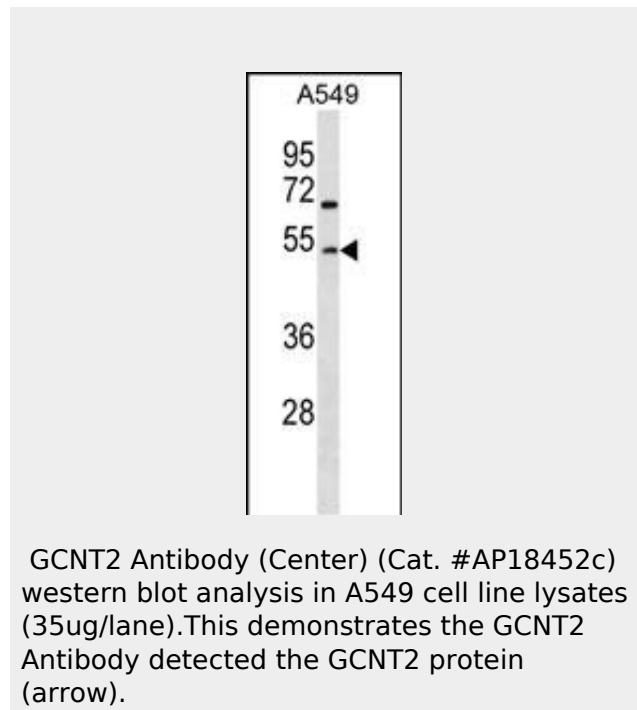
Format

Purified polyclonal antibody supplied in PBS with 0.09% (W/V) sodium azide. This antibody is purified through a protein A column, followed by peptide affinity purification.

Storage

Maintain refrigerated at 2-8°C for up to 2 weeks. For long term storage store at -20°C in small aliquots to prevent freeze-thaw cycles.

Precautions



GCNT2 Antibody (Center) - Background

This gene encodes the enzyme responsible for formation of the blood group I antigen. The i and I antigens are distinguished by linear and branched poly-N-acetyllactosaminoglycans, respectively. The encoded protein is the I-branching enzyme, a beta-1,6-N-acetylglucosaminyltransferase responsible for the conversion of fetal i antigen to adult I antigen in erythrocytes during embryonic development. Mutations in this gene have been associated with adult i blood group phenotype. Alternatively spliced transcript variants encoding different isoforms have been described.

GCNT2 Antibody (Center) - References

Twu, Y.C., et al. Blood

GCNT2 Antibody (Center) is for research use only and not for use in diagnostic or therapeutic procedures.

GCNT2 Antibody (Center) - Protein Information

Name GCNT2

Synonyms GCNT5, II, NACGT1

Function

Branching enzyme that converts linear into branched poly-N- acetyllactosaminoglycans. Introduces the blood group I antigen during embryonic development. It is closely associated with the development and maturation of erythroid cells.

Cellular Location

Golgi apparatus membrane; Single- pass type II membrane protein

Tissue Location

Isoform B is expressed in lens epithelium cells. Isoform C is expressed in reticulocytes.

110(13):4526-4534(2007)

Wang, L., et al. Biochem. Biophys. Res. Commun. 331(4):958-963(2005)

Pras, E., et al. Invest. Ophthalmol. Vis. Sci. 45(6):1940-1945(2004)

Inaba, N., et al. Blood 101(7):2870-2876(2003)

Yu, L.C., et al. Blood 101(6):2081-2088(2003)

GCNT2 Antibody (Center) - Protocols

Provided below are standard protocols that you may find useful for product applications.

- [Western Blot](#)
- [Blocking Peptides](#)
- [Dot Blot](#)
- [Immunohistochemistry](#)
- [Immunofluorescence](#)
- [Immunoprecipitation](#)
- [Flow Cytometry](#)
- [Cell Culture](#)