

**BPHL Antibody (Center)**  
**Affinity Purified Rabbit Polyclonal Antibody (Pab)**  
**Catalog # AP18229C****Specification****BPHL Antibody (Center) - Product Information**

Application	<b>WB,E</b>
Primary Accession	<a href="#">Q86WA6</a>
Other Accession	<a href="#">NP_004323.2</a>
Reactivity	<b>Human</b>
Host	<b>Rabbit</b>
Clonality	<b>Polyclonal</b>
Isotype	<b>Rabbit Ig</b>
Calculated MW	<b>32543</b>
Antigen Region	<b>96-124</b>

**BPHL Antibody (Center) - Additional Information****Gene ID 670****Other Names**

Valacyclovir hydrolase, VACVase, Valacyclovirase, 31--, Biphenyl hydrolase-like protein, Biphenyl hydrolase-related protein, Bph-rp, Breast epithelial mucin-associated antigen, MCNAA, BPHL, MCNAA

**Target/Specificity**

This BPHL antibody is generated from rabbits immunized with a KLH conjugated synthetic peptide between 96-124 amino acids from the Central region of human BPHL.

**Dilution**

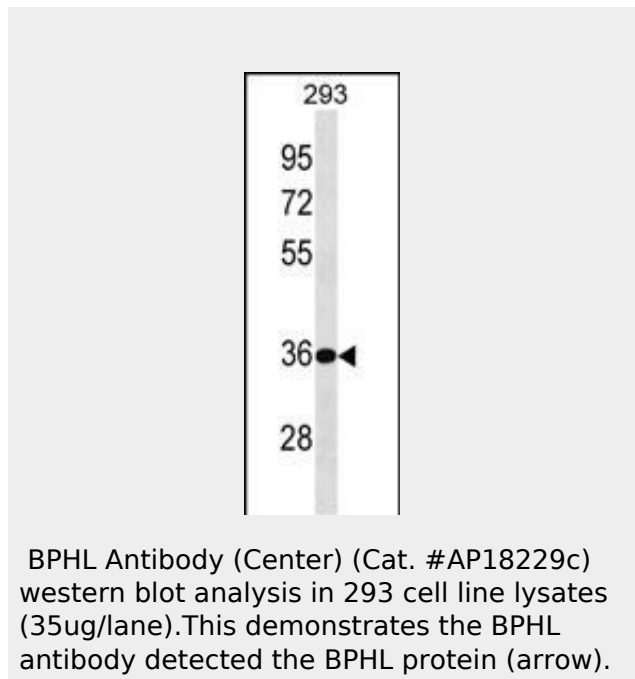
WB~~1:1000

**Format**

Purified polyclonal antibody supplied in PBS with 0.09% (W/V) sodium azide. This antibody is purified through a protein A column, followed by peptide affinity purification.

**Storage**

Maintain refrigerated at 2-8°C for up to 2 weeks. For long term storage store at -20°C in small aliquots to prevent freeze-thaw cycles.

**BPHL Antibody (Center) - Background**

This gene encodes a member of the serine protease family of hydrolytic enzymes which contain a serine in their active site. The encoded protein may play a role in activation of the antiviral prodrug valacyclovir. Alternatively spliced transcript variants have been described.

**BPHL Antibody (Center) - References**

- Davila, S., et al. *Genes Immun.* 11(3):232-238(2010)
- Lai, L., et al. *J. Biol. Chem.* 283(14):9318-9327(2008)
- Grigo, K., et al. *Biol. Chem.* 389(2):179-187(2008)
- Melk, A., et al. *Kidney Int.* 68(6):2667-2679(2005)
- Kim, I., et al. *Mol. Pharm.* 1(6):434-446(2004)

**Precautions**

BPHL Antibody (Center) is for research use only and not for use in diagnostic or therapeutic procedures.

**BPHL Antibody (Center) - Protein Information**

**Name** BPHL

**Synonyms** MCNAA

**Function**

Serine hydrolase that catalyzes the hydrolytic activation of amino acid ester prodrugs of nucleoside analogs such as valacyclovir and valganciclovir. Activates valacyclovir to acyclovir. May play a role in detoxification processes. It is a specific alpha-amino acid ester hydrolase that prefers small, hydrophobic, and aromatic side chains and does not have a stringent requirement for the leaving group other than preferring a primary alcohol.

**Tissue Location**

Expressed at high levels in liver and kidney and lower levels in heart, intestine and skeletal muscle

**BPHL Antibody (Center) - Protocols**

Provided below are standard protocols that you may find useful for product applications.

- [Western Blot](#)
- [Blocking Peptides](#)
- [Dot Blot](#)
- [Immunohistochemistry](#)
- [Immunofluorescence](#)
- [Immunoprecipitation](#)
- [Flow Cytometry](#)
- [Cell Culture](#)