

ADM2 Antibody (N-term)
Affinity Purified Rabbit Polyclonal Antibody (Pab)
Catalog # AP18001a

Specification

ADM2 Antibody (N-term) - Product Information

Application	WB,E
Primary Accession	O7Z4H4
Other Accession	NP_079142.2
Reactivity	Human
Host	Rabbit
Clonality	Polyclonal
Isotype	Rabbit IgG
Antigen Region	15-42

ADM2 Antibody (N-term) - Additional Information

Gene ID 79924

Other Names

ADM2, Intermedin, Adrenomedullin-2, AM2, Intermedin-long, IMDL, Intermedin-short, IMDS, ADM2, AM2

Target/Specificity

This ADM2 antibody is generated from rabbits immunized with a KLH conjugated synthetic peptide between 15-42 amino acids of human ADM2.

Dilution

WB~~1:1000

Format

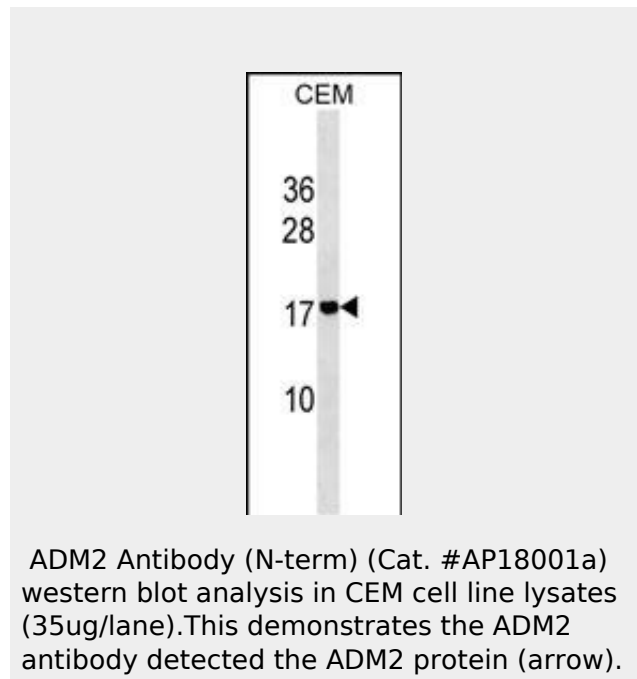
Purified polyclonal antibody supplied in PBS with 0.09% (W/V) sodium azide. This antibody is purified through a protein A column, followed by peptide affinity purification.

Storage

Maintain refrigerated at 2-8°C for up to 2 weeks. For long term storage store at -20°C in small aliquots to prevent freeze-thaw cycles.

Precautions

ADM2 Antibody (N-term) is for research use only and not for use in diagnostic or therapeutic procedures.



ADM2 Antibody (N-term) - Background

ADM2 belongs to a family of calcitonin (MIM 114130)-related peptide hormones important for regulating diverse physiologic functions and the chemical composition of fluids and tissues.

ADM2 Antibody (N-term) - References

- Cai, Y., et al. *Cardiovasc. Res.* 85(4):864-873(2010)
- Pfeil, U., et al. *Am. J. Physiol. Lung Cell Mol. Physiol.* 297 (5), L837-L845 (2009) :
- Chauhan, M., et al. *Biol. Reprod.* 81(4):777-783(2009)
- Smith, R.S. Jr., et al. *Am. J. Physiol. Heart Circ. Physiol.* 297 (3), H1040-H1047 (2009) :
- Pearson, L.J., et al. *Cell. Physiol. Biochem.* 23 (1-3), 97-108 (2009) :

ADM2 Antibody (N-term) - Protein Information**Name** ADM2**Synonyms** AM2**Function**

[Adrenomedullin-2]: May play a role as physiological regulators of gastrointestinal, cardiovascular bioactivities mediated by the CALCRL/RAMPs receptor complexes. Activates the cAMP-dependent pathway.

Cellular Location

Secreted.

Tissue Location

Expressed in the esophagus, stomach, jejunum, ileum, ileocecum, ascending colon, transverse colon, descending colon and rectum. Expressed in myocardial cells of the heart, renal tubular cells, hypothalamus, and pituitary.

ADM2 Antibody (N-term) - Protocols

Provided below are standard protocols that you may find useful for product applications.

- [Western Blot](#)
- [Blocking Peptides](#)
- [Dot Blot](#)
- [Immunohistochemistry](#)
- [Immunofluorescence](#)
- [Immunoprecipitation](#)
- [Flow Cytometry](#)
- [Cell Culture](#)