

**KCNF1 Antibody (Center)**  
**Affinity Purified Rabbit Polyclonal Antibody (Pab)**  
**Catalog # AP17981c**

**Specification**

**KCNF1 Antibody (Center) - Product Information**

|                   |                             |
|-------------------|-----------------------------|
| Application       | <b>WB,E</b>                 |
| Primary Accession | <a href="#">O9H3M0</a>      |
| Other Accession   | <a href="#">NP_002227.2</a> |
| Reactivity        | <b>Human</b>                |
| Host              | <b>Rabbit</b>               |
| Clonality         | <b>Polyclonal</b>           |
| Isotype           | <b>Rabbit Ig</b>            |
| Calculated MW     | <b>55584</b>                |
| Antigen Region    | <b>195-221</b>              |

**KCNF1 Antibody (Center) - Additional Information**

**Gene ID** 3754

**Other Names**

Potassium voltage-gated channel subfamily F member 1, Voltage-gated potassium channel subunit Kv51, kH1, KCNF1

**Target/Specificity**

This KCNF1 antibody is generated from rabbits immunized with a KLH conjugated synthetic peptide between 195-221 amino acids from the Central region of human KCNF1.

**Dilution**

WB~~1:1000

**Format**

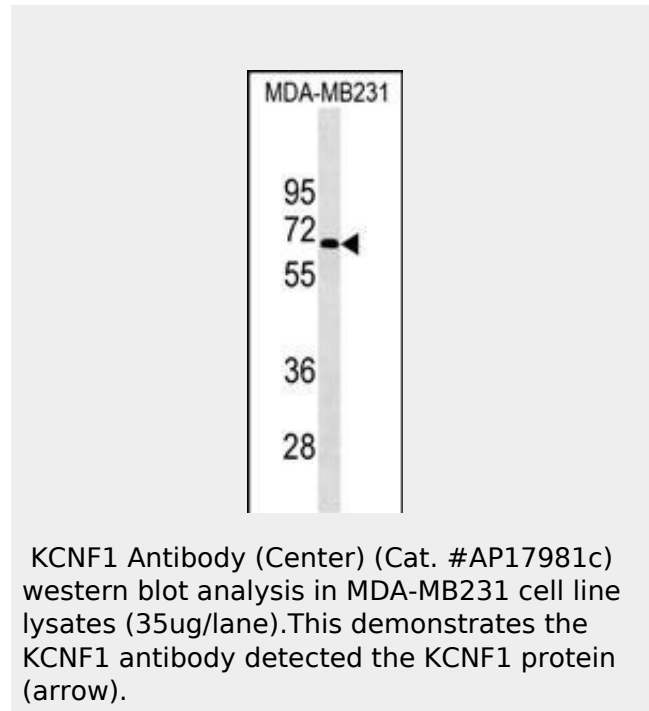
Purified polyclonal antibody supplied in PBS with 0.09% (W/V) sodium azide. This antibody is purified through a protein A column, followed by peptide affinity purification.

**Storage**

Maintain refrigerated at 2-8°C for up to 2 weeks. For long term storage store at -20°C in small aliquots to prevent freeze-thaw cycles.

**Precautions**

KCNF1 Antibody (Center) is for research use only and not for use in diagnostic or



**KCNF1 Antibody (Center) - Background**

Voltage-gated potassium (Kv) channels represent the most complex class of voltage-gated ion channels from both functional and structural standpoints. Their diverse functions include regulating neurotransmitter release, heart rate, insulin secretion, neuronal excitability, epithelial electrolyte transport, smooth muscle contraction, and cell volume. This gene encodes a member of the potassium channel, voltage-gated, subfamily F. This gene is intronless and expressed in all tissues tested, including the heart, skeletal muscle, brain, kidney, and pancreas. [provided by RefSeq].

**KCNF1 Antibody (Center) - References**

Cirulli, E.T., et al. Eur. J. Hum. Genet.

therapeutic procedures.

#### **KCNF1 Antibody (Center) - Protein Information**

**Name** KCNF1

**Function**

Putative voltage-gated potassium channel.

**Cellular Location**

Membrane; Multi-pass membrane protein.

**Tissue Location**

Detected in heart, brain, liver, skeletal muscle, kidney and pancreas

18(7):815-820(2010)

Gutman, G.A., et al. Pharmacol. Rev.  
57(4):473-508(2005)

Ottshytsch, N., et al. Proc. Natl. Acad. Sci.  
U.S.A. 99(12):7986-7991(2002)

Su, K., et al. Biochem. Biophys. Res. Commun.  
241(3):675-681(1997)

#### **KCNF1 Antibody (Center) - Protocols**

Provided below are standard protocols that you may find useful for product applications.

- [Western Blot](#)
- [Blocking Peptides](#)
- [Dot Blot](#)
- [Immunohistochemistry](#)
- [Immunofluorescence](#)
- [Immunoprecipitation](#)
- [Flow Cytometry](#)
- [Cell Culture](#)