

CCDC91 Antibody (C-term)
Affinity Purified Rabbit Polyclonal Antibody (Pab)
Catalog # AP17920b

Specification

CCDC91 Antibody (C-term) - Product Information

Application	WB,E
Primary Accession	Q7Z6B0
Other Accession	NP_060788.3
Reactivity	Human, Mouse
Host	Rabbit
Clonality	Polyclonal
Isotype	Rabbit Ig
Calculated MW	49971
Antigen Region	322-350

CCDC91 Antibody (C-term) - Additional Information

Gene ID 55297

Other Names

Coiled-coil domain-containing protein 91, GGA-binding partner, p56 accessory protein, CCDC91, GGABP

Target/Specificity

This CCDC91 antibody is generated from rabbits immunized with a KLH conjugated synthetic peptide between 322-350 amino acids from the C-terminal region of human CCDC91.

Dilution

WB~~1:1000

Format

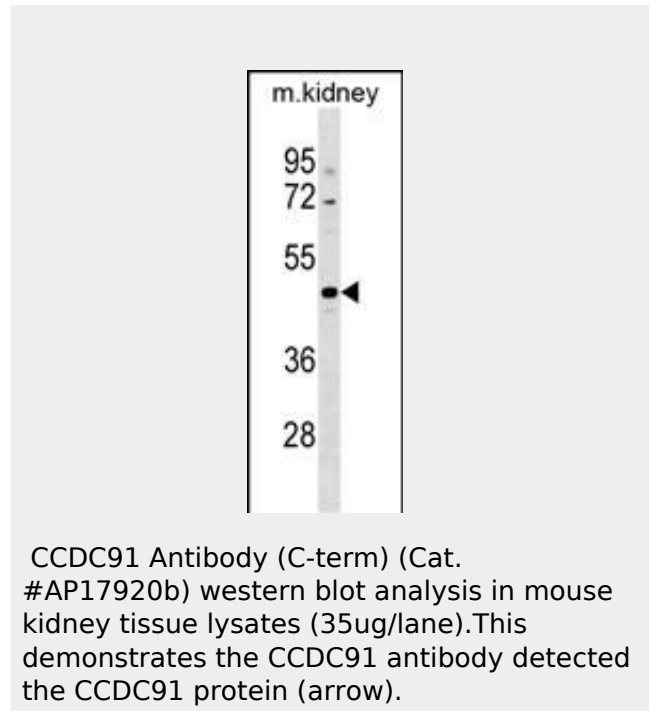
Purified polyclonal antibody supplied in PBS with 0.09% (W/V) sodium azide. This antibody is purified through a protein A column, followed by peptide affinity purification.

Storage

Maintain refrigerated at 2-8°C for up to 2 weeks. For long term storage store at -20°C in small aliquots to prevent freeze-thaw cycles.

Precautions

CCDC91 Antibody (C-term) is for research



CCDC91 Antibody (C-term) - Background

CCDC91 is involved in the regulation of membrane traffic through the trans-Golgi network (TGN).

CCDC91 Antibody (C-term) - References

- Rose, J. Phd, et al. Mol. Med. (2010) In press :
- Mardones, G.A., et al. Mol. Biol. Cell 18(9):3486-3501(2007)
- Collins, B.M., et al. Nat. Struct. Biol. 10(8):607-613(2003)
- Lui, W.W., et al. Mol. Biol. Cell 14(6):2385-2398(2003)

use only and not for use in diagnostic or therapeutic procedures.

CCDC91 Antibody (C-term) - Protein Information

Name CCDC91

Synonyms GGABP

Function

Involved in the regulation of membrane traffic through the trans-Golgi network (TGN). Functions in close cooperation with the GGAs in the sorting of hydrolases to lysosomes.

Cellular Location

Membrane; Peripheral membrane protein. Golgi apparatus, trans-Golgi network membrane; Peripheral membrane protein. Golgi apparatus, trans-Golgi network
Note=Colocalizes with GGA1, GGA2 and GGA3

Tissue Location

Widely expressed..

CCDC91 Antibody (C-term) - Protocols

Provided below are standard protocols that you may find useful for product applications.

- [Western Blot](#)
- [Blocking Peptides](#)
- [Dot Blot](#)
- [Immunohistochemistry](#)
- [Immunofluorescence](#)
- [Immunoprecipitation](#)
- [Flow Cytometry](#)
- [Cell Culture](#)