

CHCHD6 Antibody (Center)
Affinity Purified Rabbit Polyclonal Antibody (Pab)
Catalog # AP17891c

Specification

CHCHD6 Antibody (Center) - Product Information

Application	WB,E
Primary Accession	O9BRO6
Other Accession	NP_115719.1
Reactivity	Human
Host	Rabbit
Clonality	Polyclonal
Isotype	Rabbit Ig
Calculated MW	26458
Antigen Region	136-165

CHCHD6 Antibody (Center) - Additional Information

Gene ID 84303

Other Names

MICOS complex subunit MIC25,
Coiled-coil-helix cristae morphology protein 1, Coiled-coil-helix-coiled-coil-helix domain-containing protein 6, CHCHD6, CHCM1, MIC25

Target/Specificity

This CHCHD6 antibody is generated from rabbits immunized with a KLH conjugated synthetic peptide between 136-165 amino acids from the Central region of human CHCHD6.

Dilution

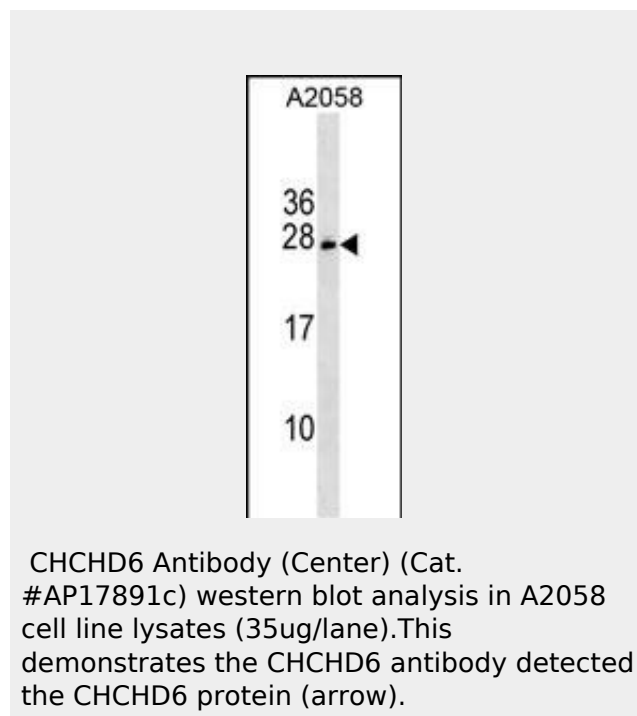
WB~~1:1000

Format

Purified polyclonal antibody supplied in PBS with 0.09% (W/V) sodium azide. This antibody is purified through a protein A column, followed by peptide affinity purification.

Storage

Maintain refrigerated at 2-8°C for up to 2 weeks. For long term storage store at -20°C in small aliquots to prevent freeze-thaw cycles.



CHCHD6 Antibody (Center) - Background

The function of this protein remains unknown.

CHCHD6 Antibody (Center) - References

- Rose, J.E., et al. Mol. Med. 16 (7-8), 247-253 (2010) :
Trynka, G., et al. Gut 58(8):1078-1083(2009)
Xie, J., et al. FEBS Lett. 581(18):3545-3549(2007)

Precautions

CHCHD6 Antibody (Center) is for research use only and not for use in diagnostic or therapeutic procedures.

CHCHD6 Antibody (Center) - Protein Information

Name CHCHD6

Synonyms CHCM1, MIC25

Function

Component of the MICOS complex, a large protein complex of the mitochondrial inner membrane that plays crucial roles in the maintenance of crista junctions, inner membrane architecture, and formation of contact sites to the outer membrane.

Cellular Location

Mitochondrion inner membrane;
Lipid-anchor. Mitochondrion

CHCHD6 Antibody (Center) - Protocols

Provided below are standard protocols that you may find useful for product applications.

- [Western Blot](#)
- [Blocking Peptides](#)
- [Dot Blot](#)
- [Immunohistochemistry](#)
- [Immunofluorescence](#)
- [Immunoprecipitation](#)
- [Flow Cytometry](#)
- [Cell Culture](#)