

CNDP1 Antibody (Center)
Affinity Purified Rabbit Polyclonal Antibody (Pab)
Catalog # AP17674c

Specification

CNDP1 Antibody (Center) - Product Information

Application	WB,E
Primary Accession	Q96KN2
Other Accession	Q66HG3 , Q8BUG2 , NP_116038.4
Reactivity	Human
Predicted	Mouse, Rat
Host	Rabbit
Clonality	Polyclonal
Isotype	Rabbit Ig
Calculated MW	56706
Antigen Region	142-170

CNDP1 Antibody (Center) - Additional Information

Gene ID 84735

Other Names

Beta-Ala-His dipeptidase, CNDP dipeptidase 1, Carnosine dipeptidase 1, Glutamate carboxypeptidase-like protein 2, Serum carnosinase, CNDP1, CN1, CPGL2

Target/Specificity

This CNDP1 antibody is generated from rabbits immunized with a KLH conjugated synthetic peptide between 142-170 amino acids from the Central region of human CNDP1.

Dilution

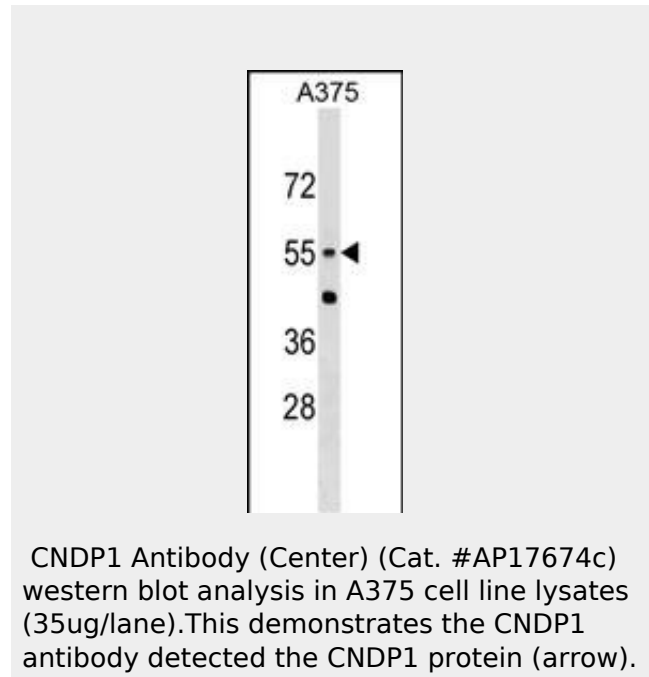
WB~~1:1000

Format

Purified polyclonal antibody supplied in PBS with 0.09% (W/V) sodium azide. This antibody is purified through a protein A column, followed by peptide affinity purification.

Storage

Maintain refrigerated at 2-8°C for up to 2 weeks. For long term storage store at -20°C in small aliquots to prevent freeze-thaw cycles.



CNDP1 Antibody (Center) - Background

This gene encodes a member of the M20 metalloprotease family. The encoded protein is specifically expressed in the brain, is a homodimeric dipeptidase which was identified as human carnosinase. This gene contains trinucleotide (CTG) repeat length polymorphism in the coding region.

CNDP1 Antibody (Center) - References

- Alkhalaf, A., et al. Diabetologia (2010) In press
- Riedl, E., et al. Diabetes 59(8):1984-1990(2010)
- Rose, J.E., et al. Mol. Med. 16 (7-8), 247-253 (2010)
- Mooyaart, A.L., et al. Diabetes 59(6):1555-1559(2010)
- Kim, S., et al. Clin J Am Soc Nephrol 5(6):1072-1078(2010)

Precautions

CNDP1 Antibody (Center) is for research use only and not for use in diagnostic or therapeutic procedures.

CNDP1 Antibody (Center) - Protein Information

Name CNDP1

Synonyms CN1, CPGL2

Cellular Location

Secreted.

Tissue Location

Found in serum and adult nervous central system. Absent in serum from patients with homocarnosinosis

CNDP1 Antibody (Center) - Protocols

Provided below are standard protocols that you may find useful for product applications.

- [Western Blot](#)
- [Blocking Peptides](#)
- [Dot Blot](#)
- [Immunohistochemistry](#)
- [Immunofluorescence](#)
- [Immunoprecipitation](#)
- [Flow Cytometry](#)
- [Cell Culture](#)