

RWDD1 Antibody (N-term)
Affinity Purified Rabbit Polyclonal Antibody (Pab)
Catalog # AP17604a**Specification****RWDD1 Antibody (N-term) - Product Information**

Application	WB,E
Primary Accession	Q9H446
Other Accession	Q99ND9 , NP_057036.2
Reactivity	Human
Predicted	Rat
Host	Rabbit
Clonality	Polyclonal
Isotype	Rabbit Ig
Calculated MW	27940
Antigen Region	38-65

RWDD1 Antibody (N-term) - Additional Information**Gene ID** 51389**Other Names**

RWD domain-containing protein 1, DRG family-regulatory protein 2, RWDD1, DFRP2

Target/Specificity

This RWDD1 antibody is generated from rabbits immunized with a KLH conjugated synthetic peptide between 38-65 amino acids from the N-terminal region of human RWDD1.

Dilution

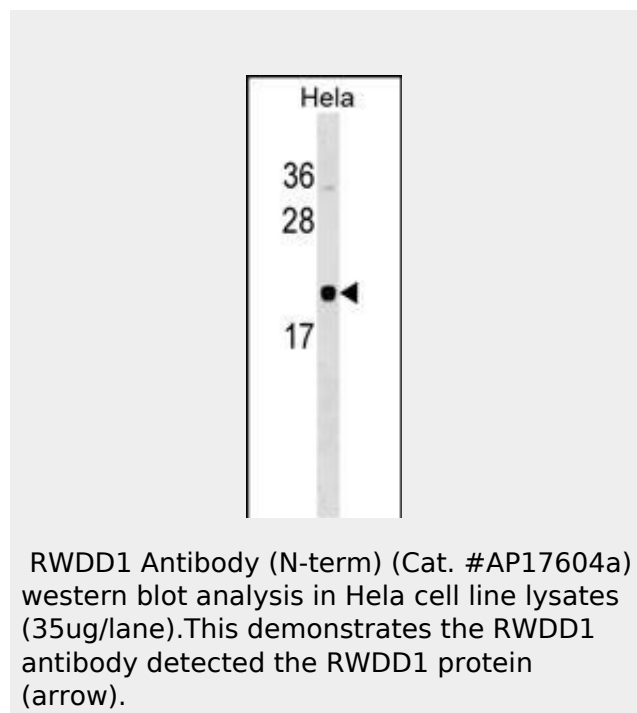
WB~~1:1000

Format

Purified polyclonal antibody supplied in PBS with 0.09% (W/V) sodium azide. This antibody is purified through a protein A column, followed by peptide affinity purification.

Storage

Maintain refrigerated at 2-8°C for up to 2 weeks. For long term storage store at -20°C in small aliquots to prevent freeze-thaw cycles.

Precautions**RWDD1 Antibody (N-term) - Background**

RWDD1 protects DRG2 from proteolytic degradation (By similarity).

RWDD1 Antibody (N-term) - References

Vieira, A.R., et al. Genet. Med. 10(9):668-674(2008)
Mungall, A.J., et al. Nature 425(6960):805-811(2003)

RWDD1 Antibody (N-term) is for research use only and not for use in diagnostic or therapeutic procedures.

RWDD1 Antibody (N-term) - Protein Information

Name RWDD1

Synonyms DFRP2

Function

Protects DRG2 from proteolytic degradation.

RWDD1 Antibody (N-term) - Protocols

Provided below are standard protocols that you may find useful for product applications.

- [Western Blot](#)
- [Blocking Peptides](#)
- [Dot Blot](#)
- [Immunohistochemistry](#)
- [Immunofluorescence](#)
- [Immunoprecipitation](#)
- [Flow Cytometry](#)
- [Cell Culture](#)