

LCORL Antibody (Center)
Affinity Purified Rabbit Polyclonal Antibody (Pab)
Catalog # AP17352c

Specification

LCORL Antibody (Center) - Product Information

Application	WB,E
Primary Accession	Q8N3X6
Other Accession	NP_710153.2 , NP_001159611.1
Reactivity	Human
Host	Rabbit
Clonality	Polyclonal
Isotype	Rabbit Ig
Calculated MW	66964
Antigen Region	306-334

LCORL Antibody (Center) - Additional Information

Gene ID 254251

Other Names

Ligand-dependent nuclear receptor corepressor-like protein, LCoR-like protein, LCORL

Target/Specificity

This LCORL antibody is generated from rabbits immunized with a KLH conjugated synthetic peptide between 306-334 amino acids from the Central region of human LCORL.

Dilution

WB~~1:1000

Format

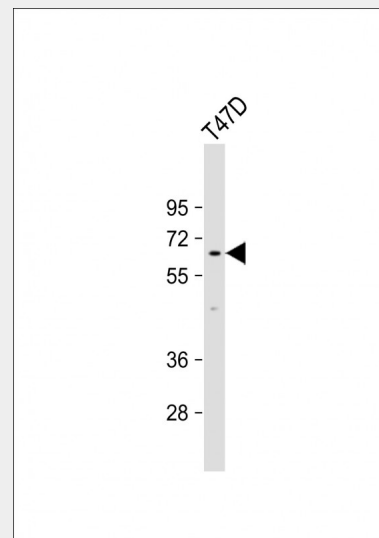
Purified polyclonal antibody supplied in PBS with 0.09% (W/V) sodium azide. This antibody is purified through a protein A column, followed by peptide affinity purification.

Storage

Maintain refrigerated at 2-8°C for up to 2 weeks. For long term storage store at -20°C in small aliquots to prevent freeze-thaw cycles.

Precautions

LCORL Antibody (Center) is for research use



Anti-LCORL Antibody (Center) at 1:1000 dilution + T47D whole cell lysate
Lysates/proteins at 20 µg per lane.
Secondary Goat Anti-Rabbit IgG, (H+L), Peroxidase conjugated at 1/10000 dilution.
Predicted band size : 67 kDa
Blocking/Dilution buffer: 5% NFDM/TBST.

LCORL Antibody (Center) - Background

This gene encodes a transcription factor that appears to function in spermatogenesis. Polymorphisms in this gene are associated with measures of skeletal frame size and adult height. Alternative splicing results in multiple transcript variants.

LCORL Antibody (Center) - References

- Rose, J.E., et al. Mol. Med. 16 (7-8), 247-253 (2010) :
- Okada, Y., et al. Hum. Mol. Genet. 19(11):2303-2312(2010)
- Liu, J.Z., et al. Twin Res Hum Genet 13(2):179-193(2010)
- Zhao, J., et al. BMC Med. Genet. 11, 96 (2010) :

only and not for use in diagnostic or therapeutic procedures.

Soranzo, N., et al. PLoS Genet. 5 (4), E1000445 (2009) :

LCORL Antibody (Center) - Protein Information

Name LCORL

Function

May act as transcription activator that binds DNA elements with the sequence 5'-CCCTATCGATCGATCTCTACCT-3'. May play a role in spermatogenesis (By similarity).

Cellular Location

Nucleus
{ECO:0000255|PROSITE-ProRule:PRU00320
}.

LCORL Antibody (Center) - Protocols

Provided below are standard protocols that you may find useful for product applications.

- [Western Blot](#)
- [Blocking Peptides](#)
- [Dot Blot](#)
- [Immunohistochemistry](#)
- [Immunofluorescence](#)
- [Immunoprecipitation](#)
- [Flow Cytometry](#)
- [Cell Culture](#)