

**POLA2 Antibody (Center)**  
**Affinity Purified Rabbit Polyclonal Antibody (Pab)**  
**Catalog # AP17301c**

**Specification**

**POLA2 Antibody (Center) - Product Information**

Application	<b>WB,E</b>
Primary Accession	<a href="#">O14181</a>
Other Accession	<a href="#">O89043</a> , <a href="#">Q58D13</a> , <a href="#">NP_002680.2</a>
Reactivity	<b>Human</b>
Predicted	<b>Bovine, Rat</b>
Host	<b>Rabbit</b>
Clonality	<b>Polyclonal</b>
Isotype	<b>Rabbit Ig</b>
Calculated MW	<b>65948</b>
Antigen Region	<b>212-240</b>

**POLA2 Antibody (Center) - Additional Information**

**Gene ID** 23649

**Other Names**

DNA polymerase alpha subunit B, DNA polymerase alpha 70 kDa subunit, POLA2

**Target/Specificity**

This POLA2 antibody is generated from rabbits immunized with a KLH conjugated synthetic peptide between 212-240 amino acids from the Central region of human POLA2.

**Dilution**

WB~~1:1000

**Format**

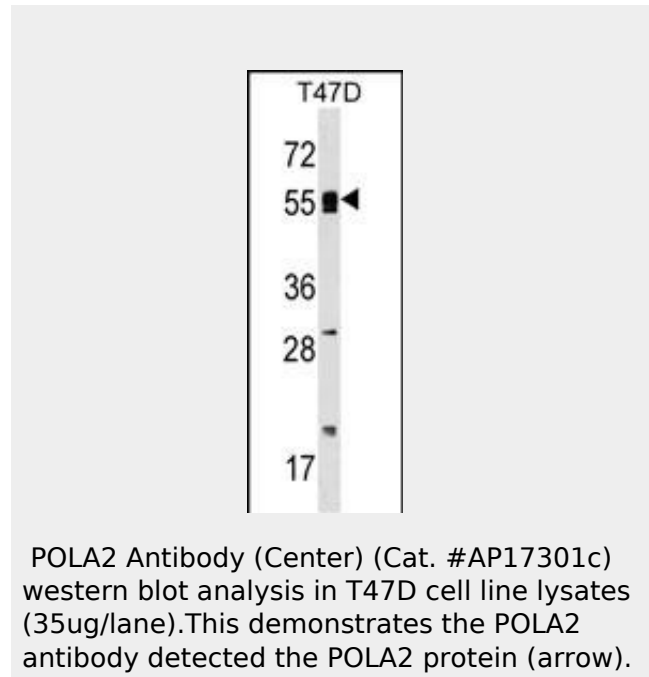
Purified polyclonal antibody supplied in PBS with 0.09% (W/V) sodium azide. This antibody is purified through a protein A column, followed by peptide affinity purification.

**Storage**

Maintain refrigerated at 2-8°C for up to 2 weeks. For long term storage store at -20°C in small aliquots to prevent freeze-thaw cycles.

**Precautions**

POLA2 Antibody (Center) is for research use



**POLA2 Antibody (Center) - Background**

POLA2 may play an essential role at the early stage of chromosomal DNA replication by coupling the polymerase alpha/primase complex to the cellular replication machinery (By similarity).

**POLA2 Antibody (Center) - References**

- Michiels, S., et al. Carcinogenesis 30(5):763-768(2009)
- Beausoleil, S.A., et al. Nat. Biotechnol. 24(10):1285-1292(2006)
- Stelzl, U., et al. Cell 122(6):957-968(2005)
- Beausoleil, S.A., et al. Proc. Natl. Acad. Sci. U.S.A. 101(33):12130-12135(2004)
- Beausoleil, S.A., et al. Proc. Natl. Acad. Sci. U.S.A. 101(33):12130-12135(2004)

only and not for use in diagnostic or therapeutic procedures.

#### **POLA2 Antibody (Center) - Protein Information**

**Name** POLA2

#### **Function**

Accessory subunit of the DNA polymerase alpha complex (also known as the alpha DNA polymerase-primase complex) which plays an essential role in the initiation of DNA synthesis (PubMed:<a href="http://www.uniprot.org/citations/9705292" target="\_blank">9705292</a>). During the S phase of the cell cycle, the DNA polymerase alpha complex (composed of a catalytic subunit POLA1, an accessory subunit POLA2 and two primase subunits, the catalytic subunit PRIM1 and the regulatory subunit PRIM2) is recruited to DNA at the replicative forks via direct interactions with MCM10 and WDHD1 (By similarity). The primase subunit of the polymerase alpha complex initiates DNA synthesis by oligomerising short RNA primers on both leading and lagging strands (By similarity). These primers are initially extended by the polymerase alpha catalytic subunit and subsequently transferred to polymerase delta and polymerase epsilon for processive synthesis on the lagging and leading strand, respectively (By similarity).

#### **Cellular Location**

Nucleus.

#### **POLA2 Antibody (Center) - Protocols**

Provided below are standard protocols that you may find useful for product applications.

- [Western Blot](#)
- [Blocking Peptides](#)
- [Dot Blot](#)
- [Immunohistochemistry](#)
- [Immunofluorescence](#)
- [Immunoprecipitation](#)
- [Flow Cytometry](#)
- [Cell Culture](#)