

**NRIP2 Antibody (Center)**  
**Affinity Purified Rabbit Polyclonal Antibody (Pab)**  
**Catalog # AP17224C**

**Specification**

**NRIP2 Antibody (Center) - Product Information**

Application	<b>WB,E</b>
Primary Accession	<a href="#">O9BQI9</a>
Other Accession	<a href="#">NP_113662.1</a>
Reactivity	<b>Human</b>
Host	<b>Rabbit</b>
Clonality	<b>Polyclonal</b>
Isotype	<b>Rabbit Ig</b>
Calculated MW	<b>31331</b>
Antigen Region	<b>91-119</b>

**NRIP2 Antibody (Center) - Additional Information**

**Gene ID 83714**

**Other Names**

Nuclear receptor-interacting protein 2,  
NRIP2

**Target/Specificity**

This NRIP2 antibody is generated from rabbits immunized with a KLH conjugated synthetic peptide between 91-119 amino acids from the Central region of human NRIP2.

**Dilution**

WB~~1:1000

**Format**

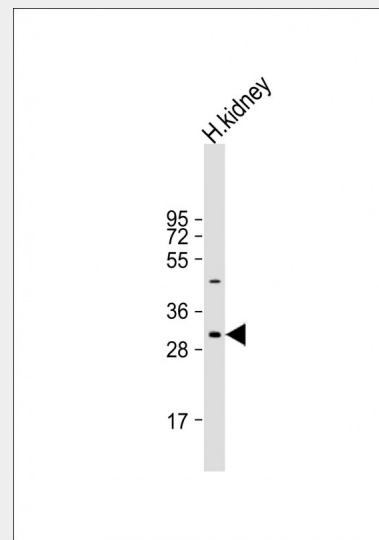
Purified polyclonal antibody supplied in PBS with 0.09% (W/V) sodium azide. This antibody is purified through a protein A column, followed by peptide affinity purification.

**Storage**

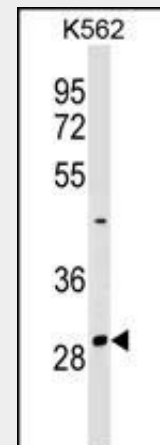
Maintain refrigerated at 2-8°C for up to 2 weeks. For long term storage store at -20°C in small aliquots to prevent freeze-thaw cycles.

**Precautions**

NRIP2 Antibody (Center) is for research use only and not for use in diagnostic or therapeutic procedures.



Anti-NRIP2 Antibody (Center) at 1:1000 dilution + human kidney lysate  
Lysates/proteins at 20 µg per lane.  
Secondary Goat Anti-Rabbit IgG, (H+L), Peroxidase conjugated at 1/10000 dilution.  
Predicted band size : 31 kDa  
Blocking/Dilution buffer: 5% NFDM/TBST.



NRIP2 Antibody (Center) (Cat. #AP17224c) western blot analysis in K562 cell line lysates (35ug/lane). This demonstrates the NRIP2 antibody detected the NRIP2 protein (arrow).

**NRIP2 Antibody (Center) - Background**

**NRIP2 Antibody (Center) - Protein Information****Name** NRIP2**Function**

Down-regulates transcriptional activation by nuclear receptors such as NR1F2.

**Cellular Location**

Nucleus.

Down-regulates transcriptional activation by nuclear receptors such as NR1F2 (By similarity).

**NRIP2 Antibody (Center) - References**Nakashima, K., et al. Allergol Int  
55(1):77-83(2006)Simpson, J.C., et al. EMBO Rep.  
1(3):287-292(2000)Greiner, E.F., et al. Proc. Natl. Acad. Sci. U.S.A.  
97(13):7160-7165(2000)**NRIP2 Antibody (Center) - Protocols**

Provided below are standard protocols that you may find useful for product applications.

- [Western Blot](#)
- [Blocking Peptides](#)
- [Dot Blot](#)
- [Immunohistochemistry](#)
- [Immunofluorescence](#)
- [Immunoprecipitation](#)
- [Flow Cytometry](#)
- [Cell Culture](#)