

**TULP1 Antibody (Center)**  
**Affinity Purified Rabbit Polyclonal Antibody (Pab)**  
**Catalog # AP17083c**

**Specification**

**TULP1 Antibody (Center) - Product Information**

Application	WB,E
Primary Accession	<a href="#">O00294</a>
Other Accession	<a href="#">NP_003313.3</a>
Reactivity	Human
Host	Rabbit
Clonality	Polyclonal
Isotype	Rabbit Ig
Calculated MW	60609
Antigen Region	184-211

**TULP1 Antibody (Center) - Additional Information**

**Gene ID** 7287

**Other Names**

Tubby-related protein 1, Tubby-like protein 1, TULP1, TUBL1

**Target/Specificity**

This TULP1 antibody is generated from rabbits immunized with a KLH conjugated synthetic peptide between 184-211 amino acids from the Central region of human TULP1.

**Dilution**

WB~~1:1000

**Format**

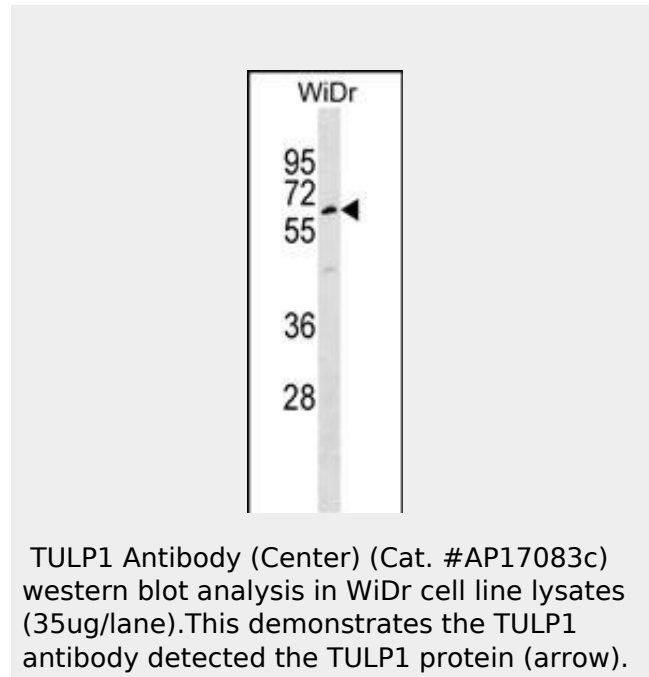
Purified polyclonal antibody supplied in PBS with 0.09% (W/V) sodium azide. This antibody is purified through a protein A column, followed by peptide affinity purification.

**Storage**

Maintain refrigerated at 2-8°C for up to 2 weeks. For long term storage store at -20°C in small aliquots to prevent freeze-thaw cycles.

**Precautions**

TULP1 Antibody (Center) is for research use only and not for use in diagnostic or therapeutic procedures.



**TULP1 Antibody (Center) - Background**

This gene encodes a member of the tubby-like gene family (TULPs). Members of this family have been identified in plants, vertebrates, and invertebrates and encode proteins of unknown function. TULP proteins share a conserved C-terminal region of approximately 200 amino acid residues. Mutations in this gene may be associated with retinitis pigmentosa.

**TULP1 Antibody (Center) - References**

- Clark, G.R., et al. Ophthalmology (2010) In press :  
Caberoy, N.B., et al. Exp. Cell Res. 316(2):245-257(2010)  
Abbasi, A.H., et al. Mol. Vis. 14, 675-682 (2008)  
:  
Mataftsi, A., et al. Invest. Ophthalmol. Vis. Sci. 48(11):5160-5167(2007)  
den Hollander, A.I., et al. Arch. Ophthalmol. 125(7):932-935(2007)

**TULP1 Antibody (Center) - Protein Information****Name** TULP1**Synonyms** TUBL1**Function**

Required for normal development of photoreceptor synapses. Required for normal photoreceptor function and for long-term survival of photoreceptor cells. Interacts with cytoskeleton proteins and may play a role in protein transport in photoreceptor cells (By similarity). Binds lipids, especially phosphatidylinositol 3-phosphate, phosphatidylinositol 4-phosphate, phosphatidylinositol 5-phosphate, phosphatidylinositol 3,4-bisphosphate, phosphatidylinositol 4,5-bisphosphate, phosphatidylinositol 3,4,5-bisphosphate, phosphatidylserine and phosphatidic acid (in vitro). Contribute to stimulation of phagocytosis of apoptotic retinal pigment epithelium (RPE) cells and macrophages.

**Cellular Location**

Cytoplasm. Cell membrane; Peripheral membrane protein; Cytoplasmic side. Secreted. Cell junction, synapse. Note=Detected at synapses between photoreceptor cells and second-order neurons. Does not have a cleavable signal peptide and is secreted by an alternative pathway (By similarity)

**Tissue Location**

Retina-specific.

**TULP1 Antibody (Center) - Protocols**

Provided below are standard protocols that you may find useful for product applications.

- [Western Blot](#)
- [Blocking Peptides](#)
- [Dot Blot](#)
- [Immunohistochemistry](#)
- [Immunofluorescence](#)
- [Immunoprecipitation](#)
- [Flow Cytometry](#)
- [Cell Culture](#)