

TCFL5 Antibody (C-term)
Affinity Purified Rabbit Polyclonal Antibody (Pab)
Catalog # AP17006b

Specification

TCFL5 Antibody (C-term) - Product Information

Application	WB,E
Primary Accession	Q9UL49
Other Accession	NP_006593.2
Reactivity	Human
Host	Rabbit
Clonality	Polyclonal
Isotype	Rabbit Ig
Calculated MW	52697
Antigen Region	382-411

TCFL5 Antibody (C-term) - Additional Information

Gene ID 10732

Other Names

Transcription factor-like 5 protein, Cha transcription factor, HPV-16 E2-binding protein 1, E2BP-1, TCFL5, CHA, E2BP1

Target/Specificity

This TCFL5 antibody is generated from rabbits immunized with a KLH conjugated synthetic peptide between 382-411 amino acids from the C-terminal region of human TCFL5.

Dilution

WB~~1:1000

Format

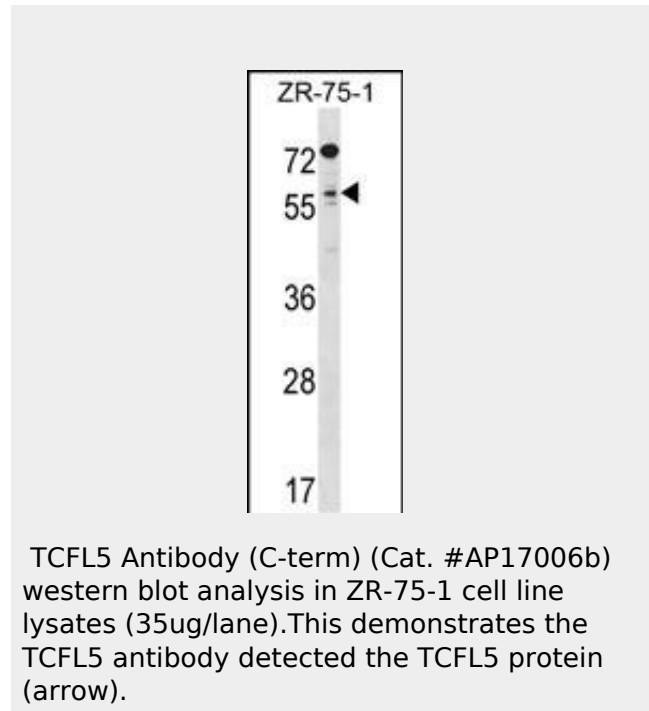
Purified polyclonal antibody supplied in PBS with 0.09% (W/V) sodium azide. This antibody is purified through a protein A column, followed by peptide affinity purification.

Storage

Maintain refrigerated at 2-8°C for up to 2 weeks. For long term storage store at -20°C in small aliquots to prevent freeze-thaw cycles.

Precautions

TCFL5 Antibody (C-term) is for research use only and not for use in diagnostic or



TCFL5 Antibody (C-term) - Background

Putative transcription factor. Isoform 3 may play a role in early spermatogenesis.

TCFL5 Antibody (C-term) - References

- Rodriguez, C.I., et al. J. Biol. Chem. 278(44):43135-43145(2003)
- Deloukas, P., et al. Nature 414(6866):865-871(2001)
- Girones, N., et al. J. Clin. Invest. 107(8):985-993(2001)
- Maruyama, O., et al. Cytogenet. Cell Genet. 82 (1-2), 41-45 (1998) :

therapeutic procedures.

TCFL5 Antibody (C-term) - Protein Information

Name TCFL5

Synonyms CHA, E2BP1

Function

Putative transcription factor. Isoform 3 may play a role in early spermatogenesis.

Cellular Location

Nucleus

{ECO:0000255|PROSITE-ProRule:PRU00981,
ECO:0000269|PubMed:9763657}

Tissue Location

Isoform 3 is testis specific. Isoform 2 is pancreas specific.

TCFL5 Antibody (C-term) - Protocols

Provided below are standard protocols that you may find useful for product applications.

- [Western Blot](#)
- [Blocking Peptides](#)
- [Dot Blot](#)
- [Immunohistochemistry](#)
- [Immunofluorescence](#)
- [Immunoprecipitation](#)
- [Flow Cytometry](#)
- [Cell Culture](#)