

**PHEX Antibody (C-term)**  
**Affinity Purified Rabbit Polyclonal Antibody (Pab)**  
**Catalog # AP16834b**

**Specification**

**PHEX Antibody (C-term) - Product Information**

Application	<b>WB,E</b>
Primary Accession	<a href="#">P78562</a>
Other Accession	<a href="#">P70669</a> , <a href="#">NP_000435.3</a>
Reactivity	<b>Human</b>
Predicted	<b>Mouse</b>
Host	<b>Rabbit</b>
Clonality	<b>Polyclonal</b>
Isotype	<b>Rabbit Ig</b>
Antigen Region	<b>567-595</b>

**PHEX Antibody (C-term) - Additional Information**

**Gene ID** 5251

**Other Names**

Phosphate-regulating neutral endopeptidase, 3424-, Metalloendopeptidase homolog PEX, Vitamin D-resistant hypophosphatemic rickets protein, X-linked hypophosphatemia protein, HYP, PHEX, PEX

**Target/Specificity**

This PHEX antibody is generated from rabbits immunized with a KLH conjugated synthetic peptide between 567-595 amino acids from the C-terminal region of human PHEX.

**Dilution**

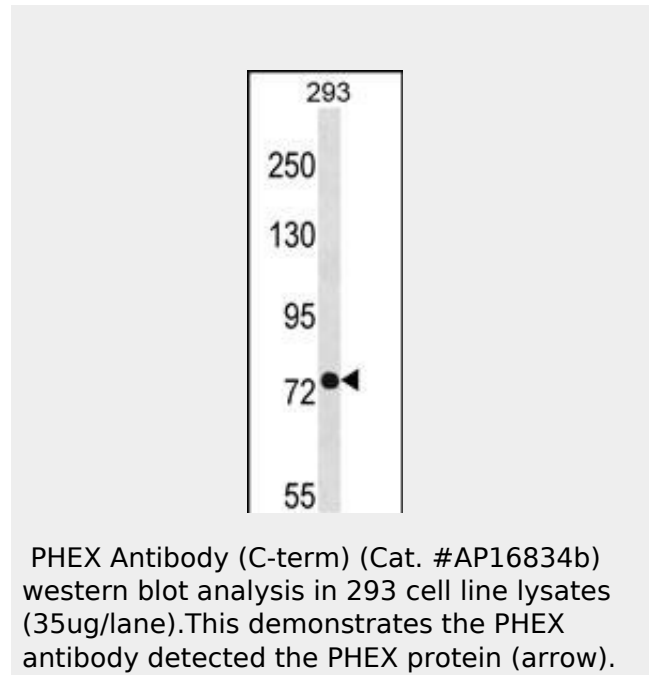
WB~~1:1000

**Format**

Purified polyclonal antibody supplied in PBS with 0.09% (W/V) sodium azide. This antibody is purified through a protein A column, followed by peptide affinity purification.

**Storage**

Maintain refrigerated at 2-8°C for up to 2 weeks. For long term storage store at -20°C in small aliquots to prevent freeze-thaw cycles.



PHEX Antibody (C-term) (Cat. #AP16834b) western blot analysis in 293 cell line lysates (35ug/lane). This demonstrates the PHEX antibody detected the PHEX protein (arrow).

**PHEX Antibody (C-term) - Background**

The protein encoded by this gene is a transmembrane endopeptidase that belongs to the type II integral membrane zinc-dependent endopeptidase family. The protein is thought to be involved in bone and dentin mineralization and renal phosphate reabsorption. Mutations in this gene cause X-linked hypophosphatemic rickets.

**PHEX Antibody (C-term) - References**

Majewski, P.M., et al. *J. Biol. Chem.* 285(45):34828-34838(2010)  
Yokoyama, K., et al. *Nephron Clin Pract* 115(4), C237-C243 (2010) :  
Clausmeyer, S., et al. *Calcif. Tissue Int.* 85(3):211-220(2009)  
Gaucher, C., et al. *Hum. Genet.* 125(4):401-411(2009)  
Strom, T.M., et al. *Curr. Opin. Nephrol. Hypertens.* 17(4):357-362(2008)

**Precautions**

PHEX Antibody (C-term) is for research use only and not for use in diagnostic or therapeutic procedures.

**PHEX Antibody (C-term) - Protein Information**

**Name** PHEX

**Synonyms** PEX

**Function**

Peptidase that cleaves SIBLING (small integrin-binding ligand, N-linked glycoprotein)-derived ASARM peptides, thus regulating their biological activity (PubMed: [9593714](http://www.uniprot.org/citations/9593714)), PubMed: [15664000](http://www.uniprot.org/citations/15664000), PubMed: [18162525](http://www.uniprot.org/citations/18162525), PubMed: [18597632](http://www.uniprot.org/citations/18597632)). Cleaves ASARM peptides between Ser and Glu or Asp residues (PubMed: [18597632](http://www.uniprot.org/citations/18597632)). Regulates osteogenic cell differentiation and bone mineralization through the cleavage of the MEPE-derived ASARM peptide (PubMed: [18597632](http://www.uniprot.org/citations/18597632)). Promotes dentin mineralization and renal phosphate reabsorption by cleaving DMP1- and MEPE-derived ASARM peptides (PubMed: [18597632](http://www.uniprot.org/citations/18597632)), PubMed: [18162525](http://www.uniprot.org/citations/18162525)). Inhibits the cleavage of MEPE by CTSB/cathepsin B thus preventing MEPE degradation (PubMed: [12220505](http://www.uniprot.org/citations/12220505)).

**Cellular Location**

Cell membrane; Single-pass type II membrane protein

**Tissue Location**

Specifically expressed in ovary (PubMed:9070861). Expressed at low levels in kidney (PubMed:9070861)

**PHEX Antibody (C-term) - Protocols**

Provided below are standard protocols that you may find useful for product applications.

- [Western Blot](#)
- [Blocking Peptides](#)
- [Dot Blot](#)
- [Immunohistochemistry](#)
- [Immunofluorescence](#)
- [Immunoprecipitation](#)
- [Flow Cytometry](#)
- [Cell Culture](#)