

EXT1 Antibody (Center)
Affinity Purified Rabbit Polyclonal Antibody (Pab)
Catalog # AP16833c

Specification

EXT1 Antibody (Center) - Product Information

Application	WB,E
Primary Accession	Q16394
Other Accession	P97464 , Q9JK82 , A5D714 , NP_000118.2
Reactivity Predicted	Human Bovine, Hamster, Mouse
Host	Rabbit
Clonality	Polyclonal
Isotype	Rabbit Ig
Calculated MW	86255
Antigen Region	298-326

EXT1 Antibody (Center) - Additional Information

Gene ID 2131

Other Names

Exostosin-1, Glucuronosyl-N-acetylglucosaminyl-proteoglycan/N-acetylglucosaminyl-proteoglycan
4-alpha-N-acetylglucosaminyltransferase,
Multiple exostoses protein 1, Putative tumor suppressor protein EXT1, EXT1

Target/Specificity

This EXT1 antibody is generated from rabbits immunized with a KLH conjugated synthetic peptide between 298-326 amino acids from the Central region of human EXT1.

Dilution

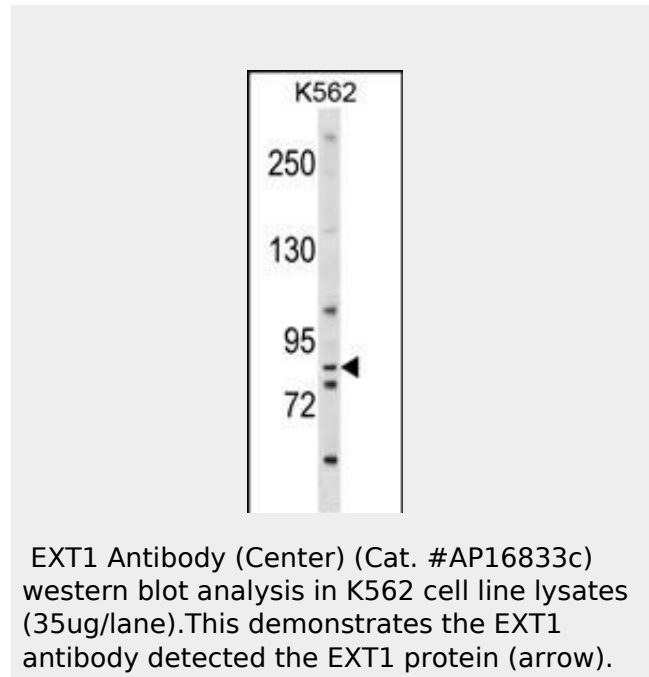
WB~~1:1000

Format

Purified polyclonal antibody supplied in PBS with 0.09% (W/V) sodium azide. This antibody is purified through a protein A column, followed by peptide affinity purification.

Storage

Maintain refrigerated at 2-8°C for up to 2



EXT1 Antibody (Center) - Background

This gene encodes an endoplasmic reticulum-resident type II transmembrane glycosyltransferase involved in the chain elongation step of heparan sulfate biosynthesis. Mutations in this gene cause the type I form of multiple exostoses. [provided by RefSeq].

EXT1 Antibody (Center) - References

Zuntini, M., et al. *Oncogene* 29(26):3827-3834(2010)
Wen, W., et al. *Genet Test Mol Biomarkers* 14(3):371-376(2010)
Li, Y., et al. *Pathology* 42(1):91-93(2010)
Baasanjav, S., et al. *BMC Med. Genet.* 11, 110 (2010) :
Ludecke, H.J., et al. *Genomics* 40(2):351-354(1997)

weeks. For long term storage store at -20°C in small aliquots to prevent freeze-thaw cycles.

Precautions

EXT1 Antibody (Center) is for research use only and not for use in diagnostic or therapeutic procedures.

EXT1 Antibody (Center) - Protein Information

Name EXT1

Function

Glycosyltransferase required for the biosynthesis of heparan- sulfate. The EXT1/EXT2 complex possesses substantially higher glycosyltransferase activity than EXT1 or EXT2 alone. Appears to be a tumor suppressor. Required for the exosomal release of SDCBP, CD63 and syndecan (PubMed:22660413).

Cellular Location

Endoplasmic reticulum membrane; Single-pass type II membrane protein. Golgi apparatus membrane; Single-pass type II membrane protein. Note=The EXT1/EXT2 complex is localized in the Golgi apparatus

Tissue Location

Ubiquitous.

EXT1 Antibody (Center) - Protocols

Provided below are standard protocols that you may find useful for product applications.

- [Western Blot](#)
- [Blocking Peptides](#)
- [Dot Blot](#)
- [Immunohistochemistry](#)
- [Immunofluorescence](#)
- [Immunoprecipitation](#)
- [Flow Cytometry](#)
- [Cell Culture](#)