

RAVER1 Antibody (N-term)
Affinity Purified Rabbit Polyclonal Antibody (Pab)
Catalog # AP16815a

Specification

RAVER1 Antibody (N-term) - Product Information

| | |
|-------------------|--|
| Application | WB,E |
| Primary Accession | Q8IY67 |
| Other Accession | Q5XI28 , Q9CW46 , NP_597709.2 |
| Reactivity | Human |
| Predicted | Mouse, Rat |
| Host | Rabbit |
| Clonality | Polyclonal |
| Isotype | Rabbit Ig |
| Calculated MW | 63877 |
| Antigen Region | 56-83 |

RAVER1 Antibody (N-term) - Additional Information

Gene ID 125950

Other Names

Ribonucleoprotein PTB-binding 1, Protein raver-1, RAVR1, KIAA1978

Target/Specificity

This RAVR1 antibody is generated from rabbits immunized with a KLH conjugated synthetic peptide between 56-83 amino acids from the N-terminal region of human RAVR1.

Dilution

WB~~1:1000

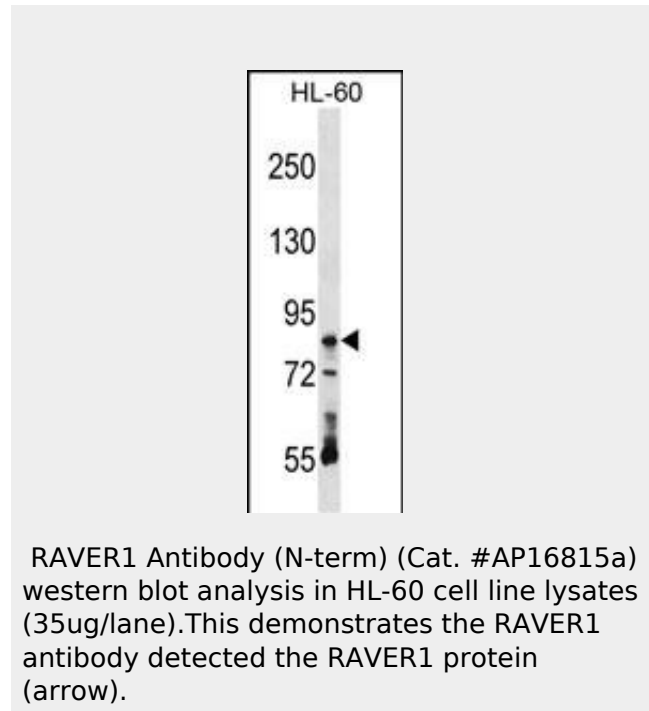
Format

Purified polyclonal antibody supplied in PBS with 0.09% (W/V) sodium azide. This antibody is purified through a protein A column, followed by peptide affinity purification.

Storage

Maintain refrigerated at 2-8°C for up to 2 weeks. For long term storage store at -20°C in small aliquots to prevent freeze-thaw cycles.

Precautions



RAVER1 Antibody (N-term) - Background

RAVER1 cooperates with PTBP1 to modulate regulated alternative splicing events. Promotes exon skipping. Cooperates with PTBP1 to modulate switching between mutually exclusive exons during maturation of the TPM1 pre-mRNA (By similarity).

RAVER1 Antibody (N-term) - References

- Bailey, S.D., et al. Diabetes Care 33(10):2250-2253(2010)
- Han, S., et al. Hum. Immunol. 71(7):727-730(2010)
- Rajaraman, P., et al. Cancer Epidemiol. Biomarkers Prev. 19(5):1356-1361(2010)
- Talmud, P.J., et al. Am. J. Hum. Genet. 85(5):628-642(2009)
- Lee, J.H., et al. Structure 17(6):833-842(2009)

RAVER1 Antibody (N-term) is for research use only and not for use in diagnostic or therapeutic procedures.

RAVER1 Antibody (N-term) - Protein Information

Name RAVR1

Synonyms KIAA1978

Function

Cooperates with PTBP1 to modulate regulated alternative splicing events. Promotes exon skipping. Cooperates with PTBP1 to modulate switching between mutually exclusive exons during maturation of the TPM1 pre-mRNA (By similarity).

Cellular Location

Nucleus. Cytoplasm. Note=Nuclear, in perinucleolar structures. Shuttles between nucleus and cytoplasm. Cytoplasm, at focal contacts and cell-cell contacts Associated with myotubes during muscle differentiation (By similarity)

RAVER1 Antibody (N-term) - Protocols

Provided below are standard protocols that you may find useful for product applications.

- [Western Blot](#)
- [Blocking Peptides](#)
- [Dot Blot](#)
- [Immunohistochemistry](#)
- [Immunofluorescence](#)
- [Immunoprecipitation](#)
- [Flow Cytometry](#)
- [Cell Culture](#)